



{ SNOWER HILL ROAD BETCHWORTH RH3  
£1,995 PER MONTH AVAILABLE 01/10/2025

Hamptons  
THE HOME EXPERTS



# { THE PARTICULARS

Snowder Hill Road Betchworth RH3

£1,995 Per Month  
Unfurnished

 2 Bedrooms  
 1 Bathroom  
 1 Reception

## Features

- Off Street Parking & Electric Charging Point, - Private Patio with Garden Beyond,
- Stunning Views, - Renewable Energy, - EPC B, - 5 Week Security Deposit

## Council Tax

Council tax band not specified

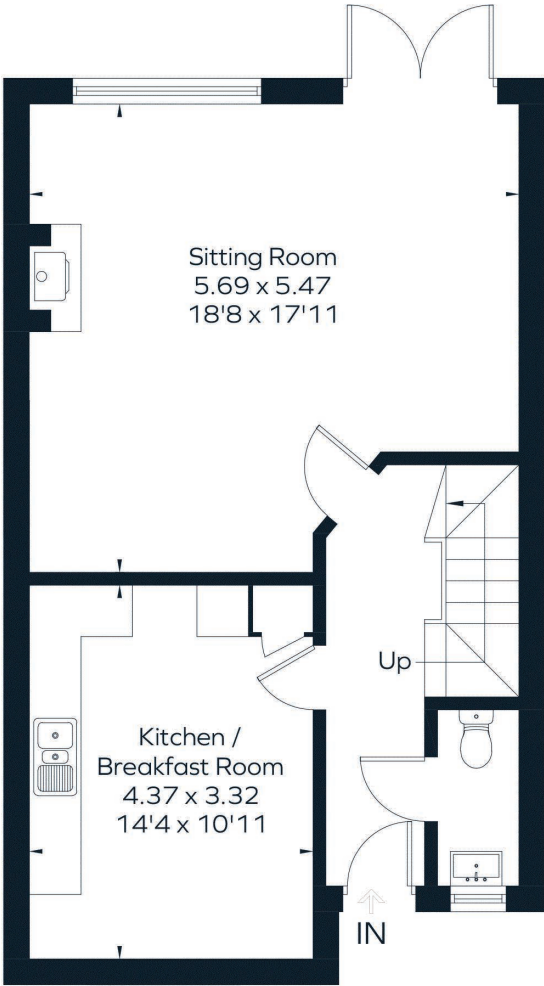
Hamptons  
6-8 Church Street  
Reigate, RH2 0AN  
01737 221411  
[Reigatelettings@hamptons.co.uk](mailto:Reigatelettings@hamptons.co.uk)  
[www.hamptons.co.uk](http://www.hamptons.co.uk)

# { A SPACIOUS, TWO DOUBLE BED HOME IN BETCHWORTH VILLAGE.

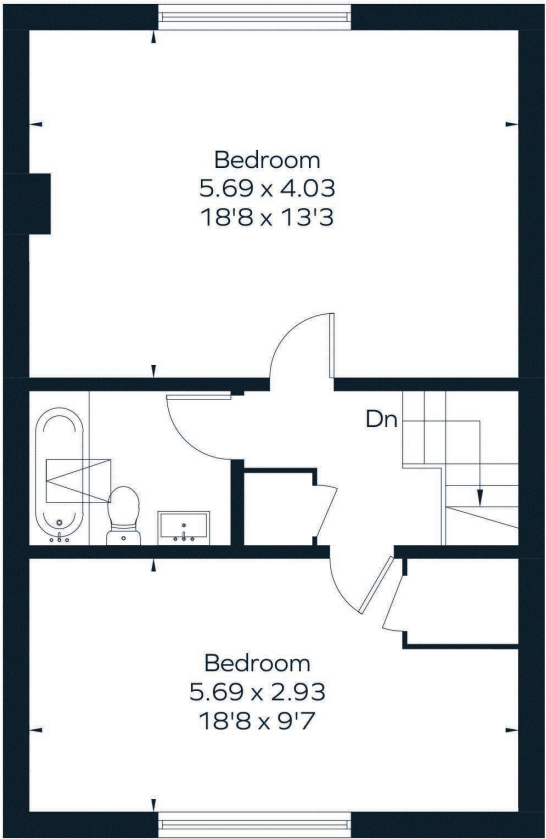
## The Property

Located in the village of Betchworth is this two double bedroom home, finished to an excellent standard. Downstairs you will find a modern kitchen with dining space, a large reception room with a cosy log burner and doors leading out onto the private patio and garden beyond. Upstairs there are two spacious double bedrooms with beautiful views of the Surrey Hills and a modern fitted bathroom. The property is equipped with a renewable energy ground source heat pump and two allocated parking spaces with an electric charging point.





Ground Floor



First Floor

Surveyed and drawn in accordance with the International Property Measurement Standards (IPMS 2: Residential)  
fourwalls-group.com 294508

**For Clarification**  
We wish to inform prospective tenants that we have prepared these particulars as a general guide and they have been confirmed as accurate by the landlord. We have not verified permissions, nor carried out a survey, tested the services, appliances and specific fittings. Room sizes are approximate and measurement figures rounded: they are taken between internal wall surfaces and therefore include cupboards/shelves, etc. Accordingly, they should not be relied upon for

carpets and furnishings. It should also be noted that all fixtures and fittings, carpeted, curtains/blinds, kitchen equipment and garden statuary, whether fitted or not, are deemed removable by the landlord unless specifically itemised with these particulars. Please enquire in office or on our website for details on holding deposit and tenancy deposit figures.

