



**North Wing**

Hindley Hall, Stocksfield





North Wing, Hindley Hall, Stocksfield Northumberland NE43 7RY

Guide Price £495,000

North Wing is a beautiful and unique family home, lived in by the current owners since 1995 - it was originally the kitchen/servants quarters for the old Hall. The four bedroom stone built home has generous accommodation set over three floors, with a stone pillared and gated entrance leading to a large gravel driveway for several cars, with an attractive paved seating area, small lawned garden and timber wood store. The impressive period house is well presented throughout with lovely features including high ceilings, wood floors, timber double glazed windows, wood burning stove in the sitting room, and an oil fired AGA and traditional pantry in the kitchen.

Reception hallway | Cloakroom/wc | Fabulous split level sitting room and dining room | Sitting room with wood burning stove | Generous formal dining room | Kitchen/breakfast room with AGA and pantry | Utility room | First floor | Master bedroom with built in storage | Ensuite shower room/wc | Guest double bedroom/study | Second floor | Two large double bedrooms, one with double door built in wardrobes | Family bathroom with separate shower | Lovely private garden and driveway.

Hindley Hall, located just to the south and west of the village of Stocksfield, is a beautiful country estate, originally built circa 1851 and is approached via a shared tree lined avenue which leads to the gated private driveway for North Wing. The impressive country house and enjoys the convenience of being near to Stocksfield and the train station, approximately 1.5 miles, with easy access to Riding Mill and Corbridge with its wide variety of shops and rail links into Newcastle. The A69 links the road network locally into Newcastle, Tyne & Wear and Newcastle International Airport in nearby Ponteland.

Mains electric and water – private drainage | Tenure: Freehold | Council Tax Band G | Energy Performance Certificate E





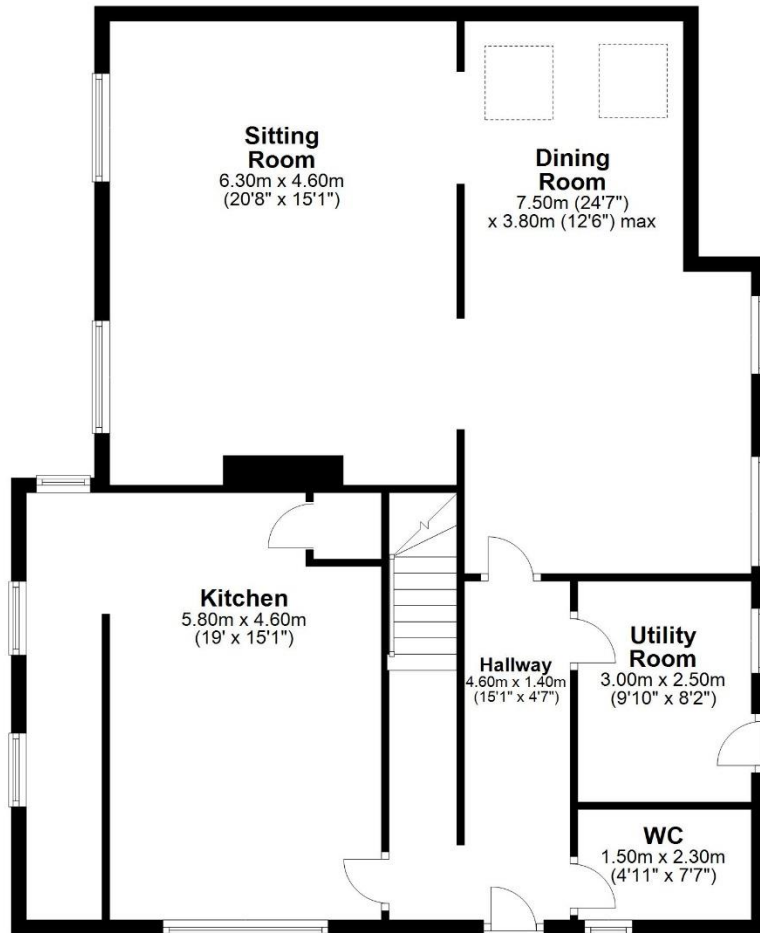






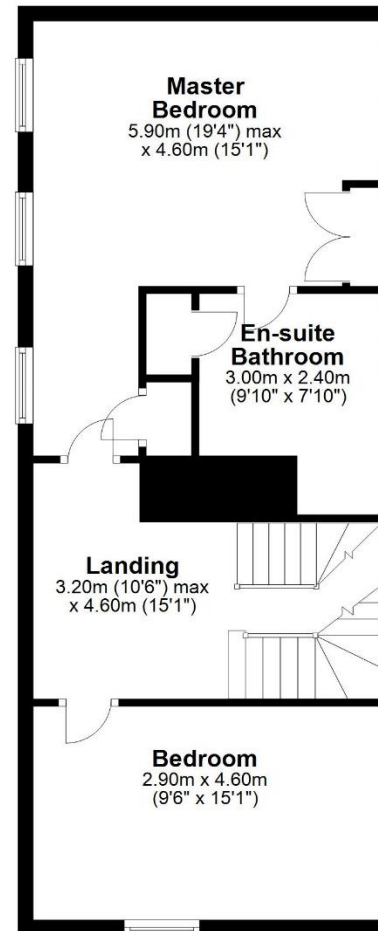
### Ground Floor

Approx. 106.5 sq. metres (1146.1 sq. feet)



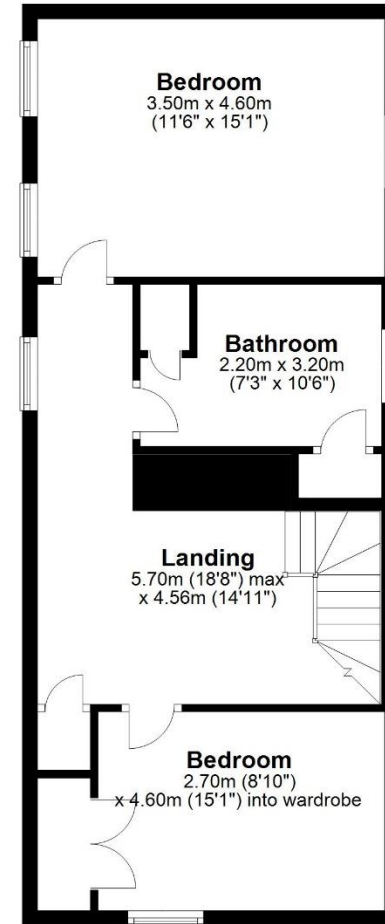
### First Floor

Approx. 55.8 sq. metres (600.2 sq. feet)



### Second Floor

Approx. 56.2 sq. metres (604.4 sq. feet)



Total area: approx. 218.4 sq. metres (2350.6 sq. feet)

**North Wing, Hindley Hall**





All enquiries to our Ponteland Office | Coates Institute, Main Street, Ponteland, Newcastle upon Tyne NE20 9NH

T: 01661 823951 | [www.sandersonyoung.co.uk](http://www.sandersonyoung.co.uk)

