



4 Narrowgate Court

Alnwick



SANDERSON
YOUNG



4 Narrowgate Court Alnwick, Northumberland, NE66 1HL

Excellent fully refurbished, three bedroom, maisonette flat located in Narrowgate, the historic heart of Alnwick town and minutes from Alnwick Castle and numerous shops, cafes/pubs and hotels & restaurants - positioned on the first and second floors of this purpose built Local Authority building, with a communal entrance serving only two flats. NO UPWARD CHAIN

The superb three bedroom maisonette flat, is one of only two apartments sharing the secure communal entrance from the bustling Narrowgate, adjacent to the memorial statue of 'Harry Hotspur' and minutes from Alnwick Castle, independent shops, cafes, pubs/restaurants - an ideal main or second home in the heart of Alnwick, with its café culture, active Market Place, Alnwick Playhouse/Cinema.

The flat has been well maintained throughout, with new carpets fitted, redecorated throughout, and fitted with a modern kitchen and bathroom.

Price Guide:

Guide Price £140,000

🛏️ 3 🛋️ 1 🚿 1 🚿 C





Ground floor - secure communal entrance with stairs leading to the First floor

First floor - Private hallway with cloaks cupboard and stairs leading to the second floor | Fabulous sitting/dining room with excellent natural light from the windows overlooking Narrowgate - with a feature fireplace and Plantation shutters to the windows | Contemporary Kitchen fitted with a range of white hi-gloss cabinets, with gas hob, oven, integrated dishwasher, fridge/freezer and free standing washing machine - window to the rear with Plantation shutters.

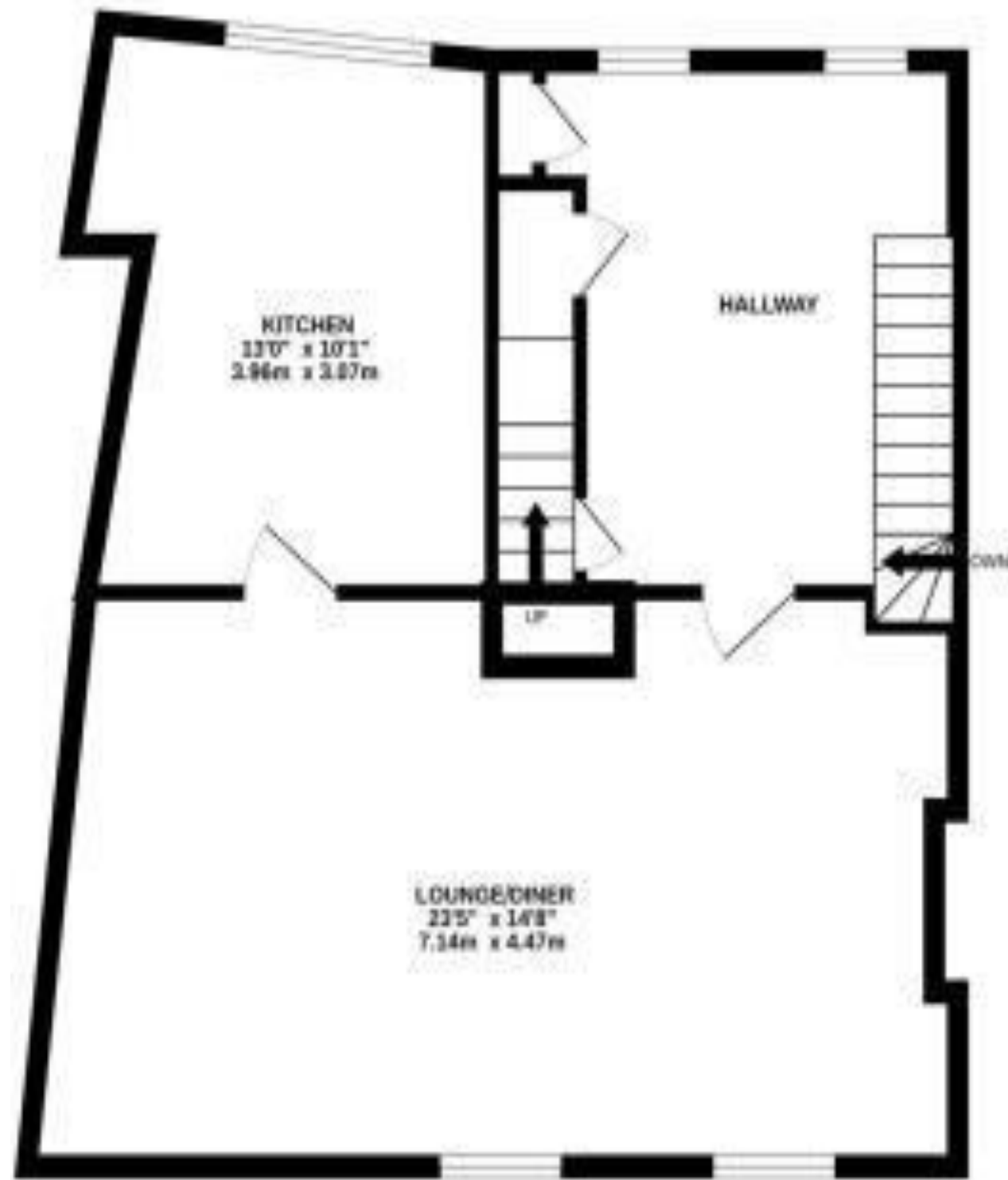
Second floor - Landing with cupboard housing the gas boiler and pull down ladder giving access to a boarded and insulated loft | Double bedroom one overlooking Narrowgate, and sliding door fitted wardrobes | Double bedroom two, with a built in wardrobe | Single bedroom three overlooking Narrowgate | Modern bathroom fitted with a bath with shower over, wash hand basin, WC and chrome ladder radiator.



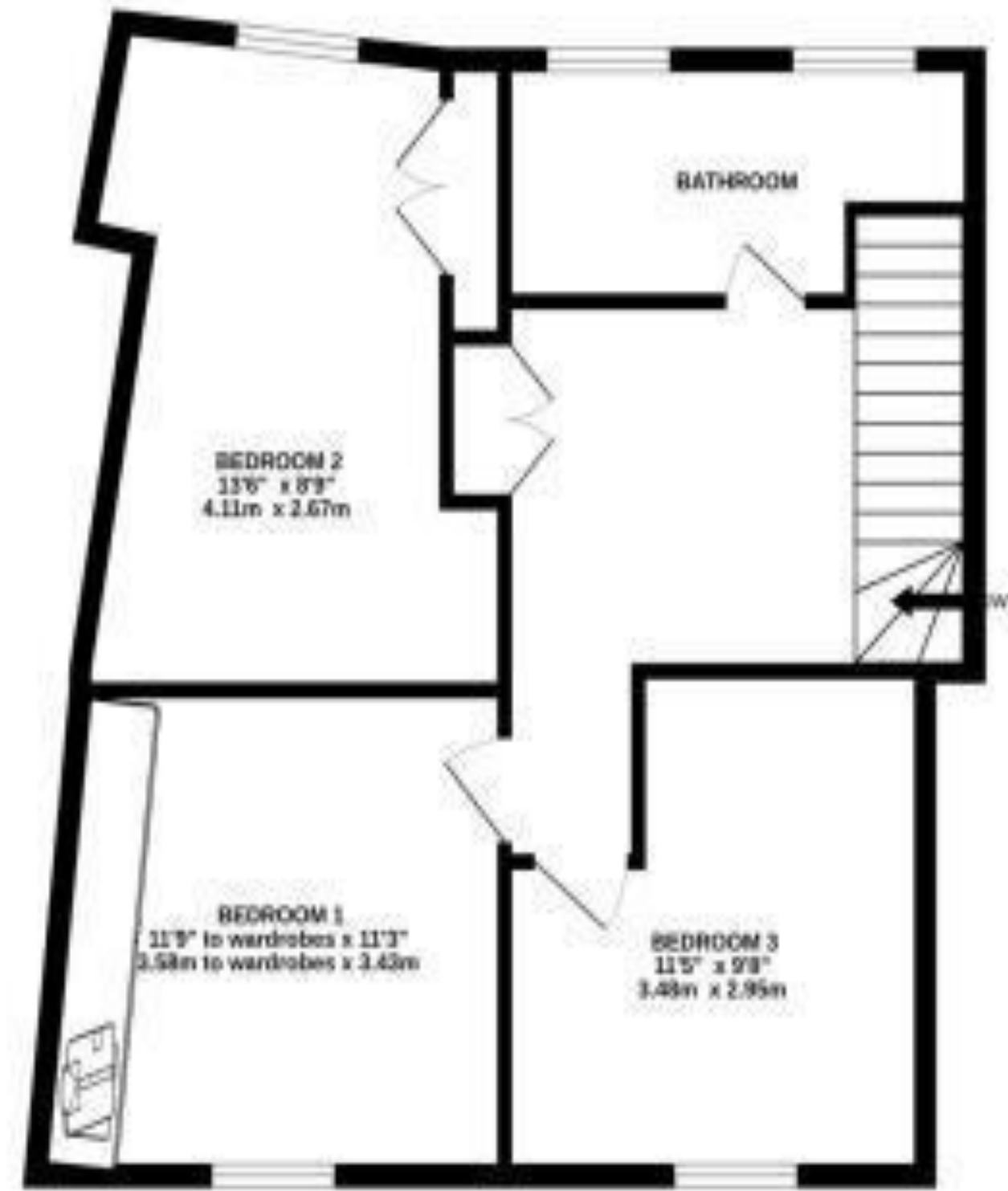
Alison Oxley
01665 600 170
alison.oxley@sandersonyoung.co.uk



GROUND FLOOR
634 sq.ft. (58.9 sq.m.) approx.



1ST FLOOR
628 sq.ft. (58.3 sq.m.) approx.



TOTAL FLOOR AREA : 1262 sq.ft. (117.2 sq.m.) approx.

Whilst every attempt has been made to ensure the accuracy of the floorplan contained here, measurements of doors, windows, rooms and any other items are approximate and no responsibility is taken for any error, omission or mis-statement. This plan is for illustrative purposes only and should be used as such by any prospective purchaser. The services, systems and appliances shown have not been tested and no guarantee as to their operability or efficiency can be given.
Made with Metroplex 6/2025



Externally - Shared use of the communal courtyard and drying area | On street permit parking and car parks are located close by within Alnwick town centre - time restrictions do apply in certain locations.

Services: Mains Electric, Gas, Water & Drainage | Gas Central Heating | Tenure: Leasehold | Council Tax: Band A | EPC: C

Lease Details: Owner of Freehold: Northumberland County Council | 99 Years Remaining on Lease | Ground Rent: £10 | Annual Service Charge Approx £200 | Managing Agents: Northumberland County Council

4 Narrowgate Court

Alnwick

