



St Elmo's

26 Northumberland Street,
Alnmouth



SANDERSON
YOUNG





St Elmo's
26 Northumberland Street, Alnmouth,
Alnwick, Northumberland, NE66 2RA

A superb & characterful three bedroom, upper maisonette apartment in this attractive stone building in Alnmouth, in the heart of this beautiful coastal village only a few steps from the local pubs, restaurants, deli/shops and beach - the property has many period features, and would be an ideal main or second home, or commercial holiday let - NO UPWARD CHAIN

St Elmos has spacious accommodation, circa 109m2, set over the first and second floors, with its own private entrance from Northumberland Street, many traditional features retained including period cast iron and marble fireplaces, wood floors, decorative ceiling coving and moulding, original internal doors, and benefitting from gas central heating and uPVC double glazed windows.

Price Guide:

Guide Price £475,000

 3  1  2  C

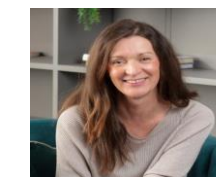




Ground floor - Vestibule with an original tiled floor and decorative stained glass upper pane | Staircase with wood balustrade leads to the first floor accommodation.

First floor - First floor landing with doors to the sitting/dining room and kitchen | Fabulous sitting/dining room with a marble fireplace with cast iron insert, excellent high ceilings with coving, moulding and a central rose, wood floor and windows to front, with stylish plantation shutters - French doors open to the kitchen | Well appointed modern kitchen located to the rear of the property - fitted with a range of cream hi-gloss cabinets and a central island with a breakfast bar and built integrated hob, with extractor - integrated appliances include; dishwasher, washing machine, and fridge/freezer | At the half landing there is access to the bathroom/WC | Stylish Family bathroom with a free standing oval bath with contemporary shower attachment, Wc and basin - heated towel rail and windows to the rear giving excellent natural light.

Second floor - Second floor landing gives access to the three bedrooms, all with built in storage, and a shower room/WC | Double bedroom one has a cast iron fireplace, views to the rear and space for freestanding bedroom furniture | Bedroom two overlooks Northumberland Street to the front with a double door built in wardrobe | Single bedroom three has a dormer window to the front and built in wardrobe | Shower room fitted with a Rainfall head shower, WC and wash hand basin in a vanity cabinet, heated towel rail.

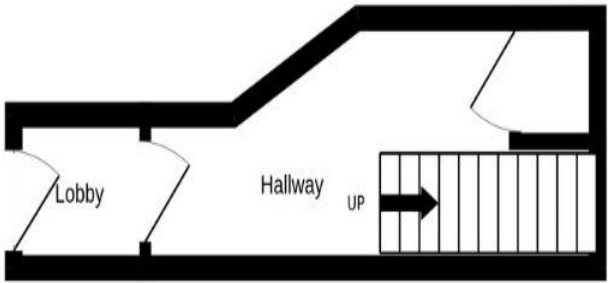


Lizzie Beattie
01665 600 170
lizzie.beattie@sandersonyoung.co.uk

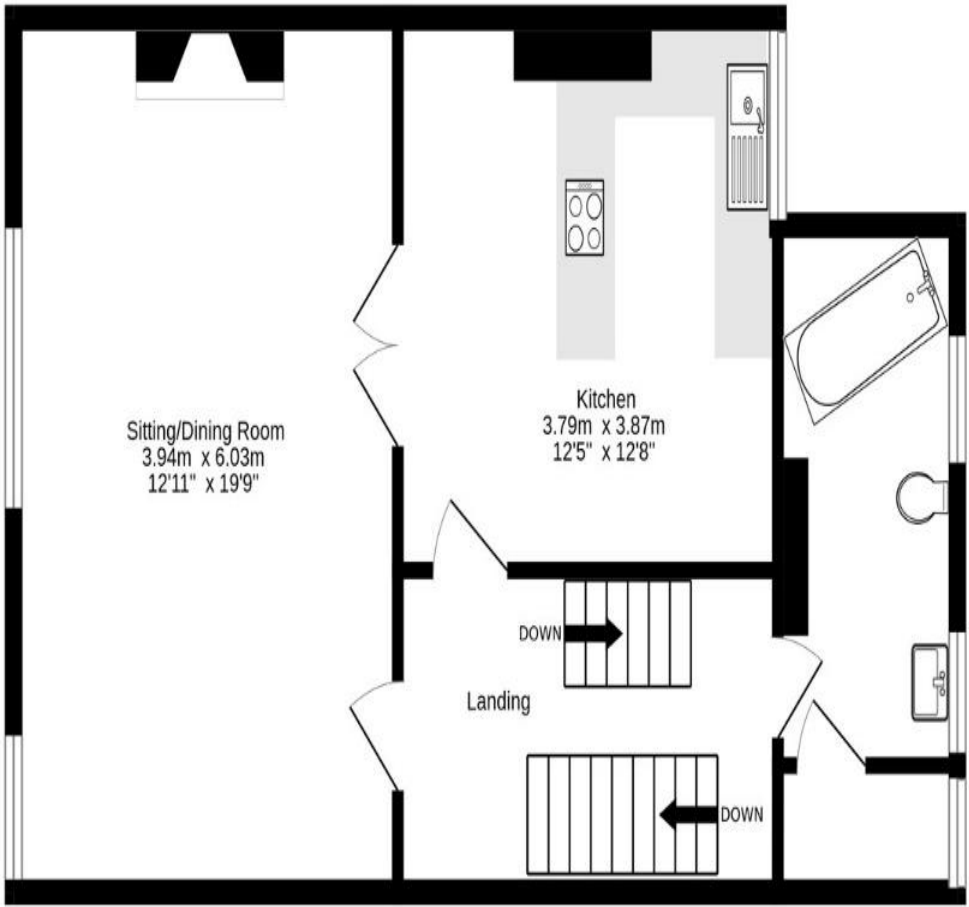




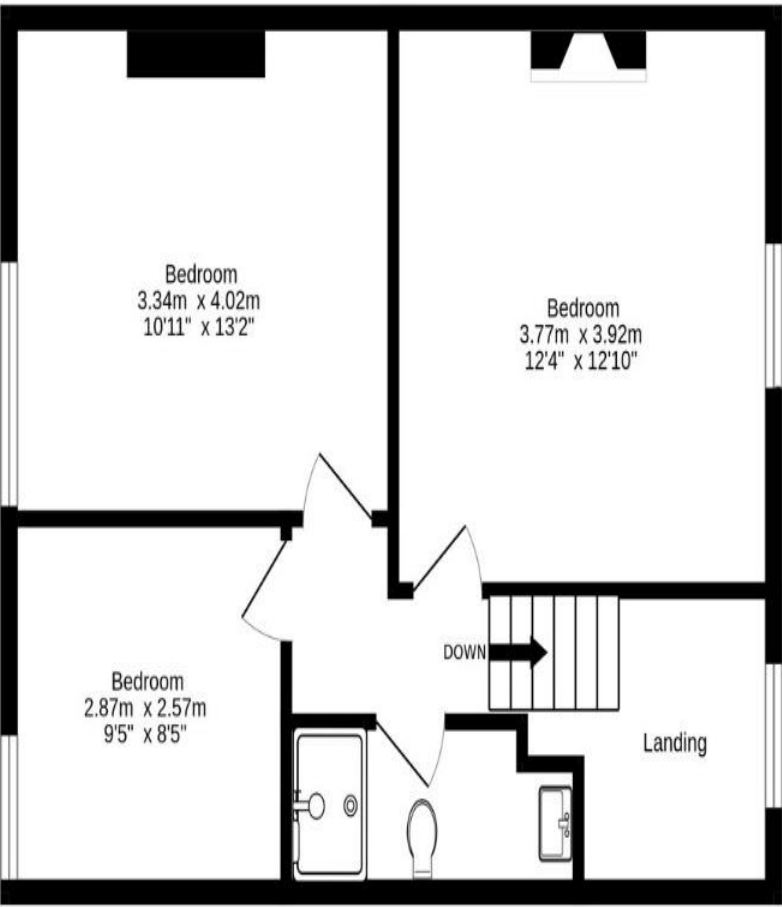
Ground Floor
8.5 sq.m. (91 sq.ft.) approx.



1st Floor
54.6 sq.m. (588 sq.ft.) approx.



2nd Floor
46.7 sq.m. (503 sq.ft.) approx.



Alnmouth provides a superb quality of life with a stunning sandy beach and Estuary, many high quality restaurants, pubs and coffee shops, a delicatessen, post office, golf club, sailing club and cricket club. It has excellent connectivity to Newcastle, Edinburgh Waverley and London Kings Cross via the North East main train railway station close by.

Alnmouth is a top Northumberland tourist destination with the surrounding coast having beautiful sandy beaches, historic castles and quaint villages.

Services: Mains Electric, Gas, Water & Drainage | Gas Central Heating | Tenure: Leasehold with a Tyneside Lease | Council Tax: Band D | EPC: C

Lease Term - 999 years | No Ground Rent | No Annual Service Charge

TOTAL FLOOR AREA : 109.8 sq.m. (1182 sq.ft.) approx.

Whilst every attempt has been made to ensure the accuracy of the floorplan contained here, measurements of doors, windows, rooms and any other items are approximate and no responsibility is taken for any error, omission or mis-statement. This plan is for illustrative purposes only and should be used as such by any prospective purchaser. The services, systems and appliances shown have not been tested and no guarantee as to their operability or efficiency can be given.
Made with Metropix ©2025

St Elmo's

26 Northumberland Street,
Alnmouth


SANDERSON
YOUNG

