



Little Cottage

9 Union Street,
Seahouses



SANDERSON
YOUNG



Little Cottage,
9 Union Street, Seahouses,
Northumberland, NE68 7RT

A lovely, traditional two bedroom, single storey cottage with a superb, west facing front garden - the cosy and beautifully presented cottage is located within minutes of Seahouses Harbour, Swallow Fish and local pubs/restaurants - currently a successful commercial holiday home with Travel Chapter - NO UPWARD CHAIN

Little Cottage is an immaculate, two bedroom single storey cottage close to Seahouses Harbour currently let as a holiday home but would be ideal as a small main home or coastal second home.

Price Guide:
Offers Over £235,000

2 1 E





The cosy cottage, rendered with a red pantile roof, is tucked away to the end of Union Street, with an attractive west facing front garden with a wall and iron railings to the boundary, small rear yard with a secure gate/door to South Street and on street parking (not allocated). The cottage is located a few yards from 'Swallow Fish' an excellent fresh fish shop, and a short walk from 'The Black Swan' pub with its excellent locally sourced menu.

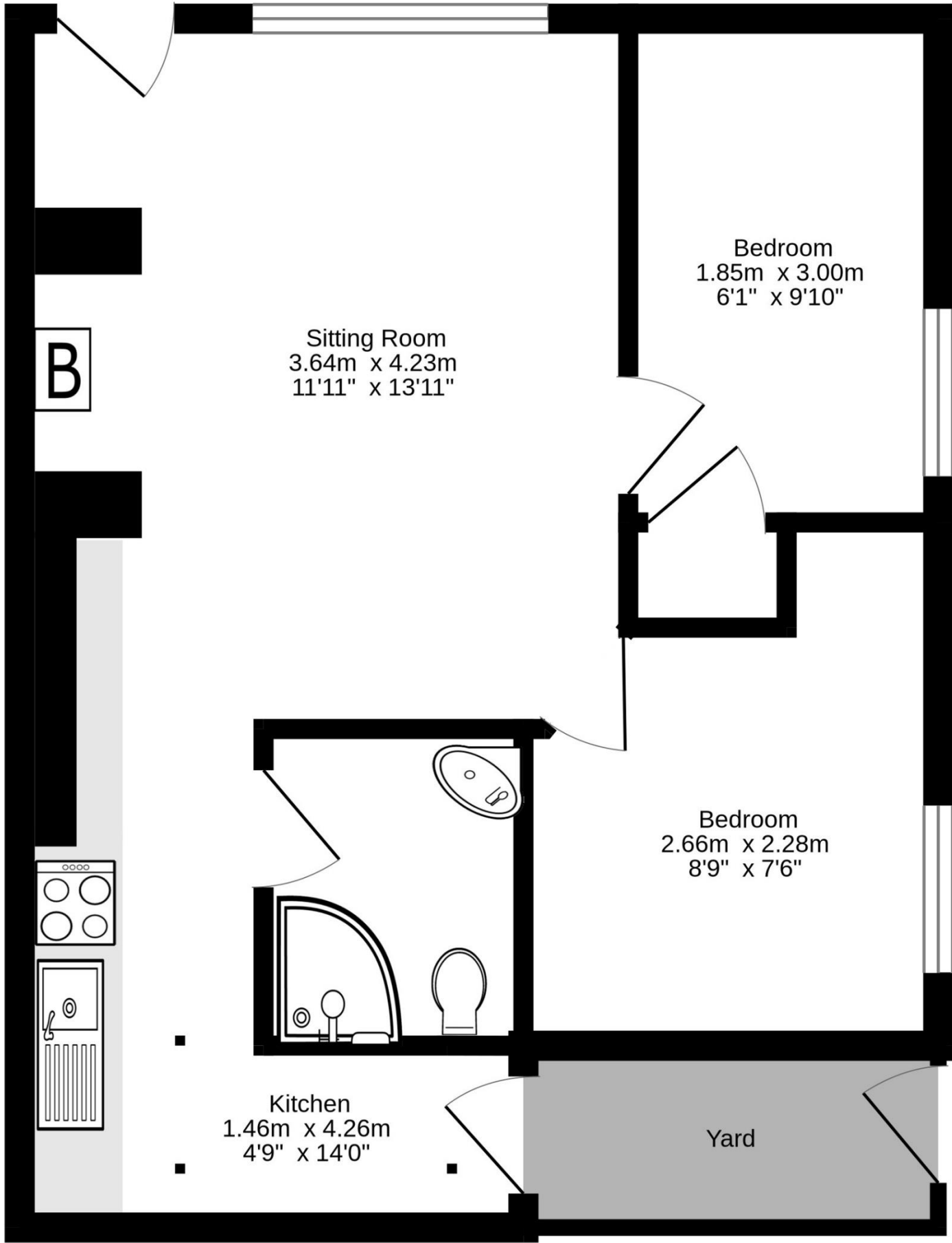
Lovely open plan sitting/dining room with a stone inglenook fireplace, cast iron wood burning stove (2021) and oak floors - a bow window to the front overlooks the charming enclosed garden to front | Well appointed Galley style kitchen fitted with a range of wood cabinets, with an electric hob & oven, integrated microwave and space for a fridge/freezer | Double bedroom one with built in double door wardrobe and window to South Street | Single bedroom two with built in storage and a window to South Street | Shower room with a corner shower, WC and wash hand basin.



Alison Oxley
01665 600 170
alison.oxley@sandersonyoung.co.uk



Ground Floor
36.0 sq.m. (388 sq.ft.) approx.



Seahouses is ideally positioned on Northumberland’s Heritage coastline from which walks can be enjoyed along the miles of unspoilt beaches and dunes. To the north of Seahouses there is the historic village of Bamburgh with its imposing Castle and to the south the harbour village of Beadnell popular for its beaches and water sports. Seahouses village has a variety of shops, restaurants/hotels, public houses, a Links golf course and 'Seafiel'd' Leisure Club with swimming pool and Spa.

Services: Mains Electric, Water & Drainage | Electric Radiators | Tenure: Freehold | Council Tax: Business Rates | EPC: E

TOTAL FLOOR AREA : 36.0 sq.m. (388 sq.ft.) approx.
Whilst every attempt has been made to ensure the accuracy of the floorplan contained here, measurements of doors, windows, rooms and any other items are approximate and no responsibility is taken for any error, omission or mis-statement. This plan is for illustrative purposes only and should be used as such by any prospective purchaser. The services, systems and appliances shown have not been tested and no guarantee as to their operability or efficiency can be given.
Made with Metropix ©2025

Little Cottage

9 Union Street,
Seahouses

