



5 Mews Towers

Park View, Alnwick



SANDERSON
YOUNG



5 Mews Towers
Park View, Northumberland, NE66
1PT

A well presented two bedroom Over 55's ground floor apartment, located in a modern purpose built development close to Alnwick town centre, Barter Books, Swansfield Park and the Percy Tenantry Column.

Mews Towers is a modern apartment development, exclusive to over 55's close to Alnwick town centre - the apartment benefits from a secure communal entry, uPVC double windows, and electric heating.

Price Guide:
 Offers Over £100,000

🛏️² 🛋️¹ 🚿¹ 🍳^C





Secure intercom entry | Hallway with a storage cupboard housing the water tank | Sitting room with two windows to the front and access to the kitchen/breakfast room | Kitchen/breakfast room fitted with a range of cabinets - induction hob & extractor, integrated oven, fridge/freezer and washing machine | Double bedroom with two windows to the front | Bedroom two/study with a window to the front | Shower room with double length mains shower, wash hand basin and WC | Residents/visitor parking (not allocated) and well maintained communal gardens.

Included within the service charge for the building is the use of a fully equipped laundry room, two communal lounges and Guest Suite which can be booked for overnight visitors.



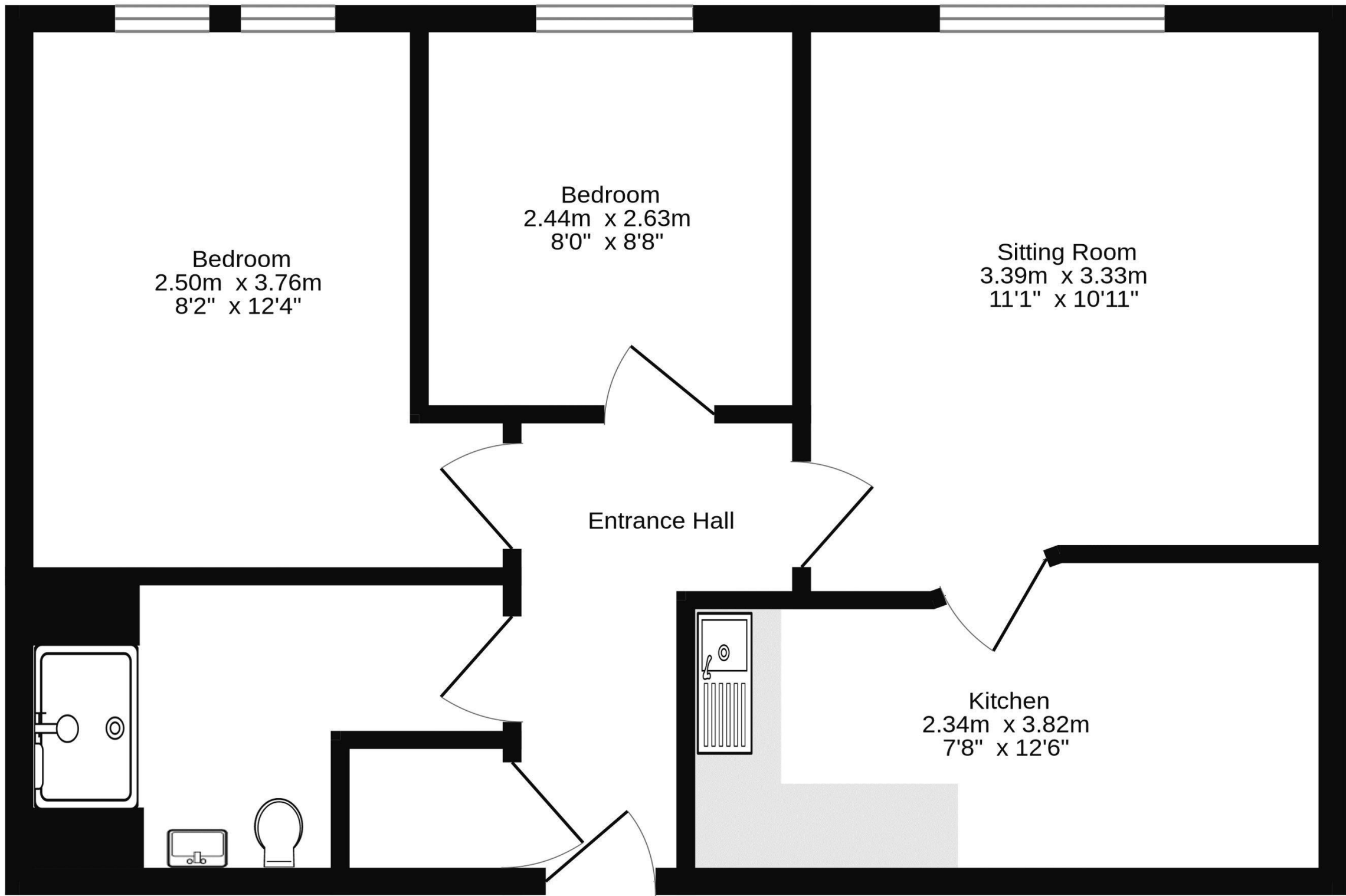
Alison Oxley
01665 600 170
alison.oxley@sandersonyoung.co.uk



Ground Floor
47.4 sq.m. (510 sq.ft.) approx.

Services: Mains Electric, Water & Drainage | Storage Heaters | Tenure: Leasehold | Council Tax: Band B | EPC: C

Lease Details: Owner of the Freehold: Charles Church Developments LTD | Expiry Date of Lease: 1st January 2132 | 107 years remaining | Ground Rent: £100 annually | Service/Maintenance Charge: £2,065 annually | Service/Maintenance Charge reviewed annually | Managing Agents: Kingston Property Services LTD | Pets allowed with Management company consent



TOTAL FLOOR AREA : 47.4 sq.m. (510 sq.ft.) approx.

Whilst every attempt has been made to ensure the accuracy of the floorplan contained here, measurements of doors, windows, rooms and any other items are approximate and no responsibility is taken for any error, omission or mis-statement. This plan is for illustrative purposes only and should be used as such by any prospective purchaser. The services, systems and appliances shown have not been tested and no guarantee as to their operability or efficiency can be given.

Made with Metropix ©2025

5 Mews Towers

Park View, Alnwick

