



Broadwood House

Tughall Steads



SANDERSON
YOUNG





Broadwood House
Tughall Steads, Chathill,
Northumberland, NE67 5ER

Broadwood is a generous and well proportioned, three bedroom stone conversion in this attractive farm steading near Beadnell - used a second home and holiday let by the current owners, with a decked terrace seating area, allocated parking for two cars and a an integral double garage.

Broadwood is a deceptively spacious, traditional stone barn conversion located only 2 miles from Beadnell and the stunning beaches on the Northumberland coastline.

The house has retained lovely traditional features including vaulted beamed ceilings, with the accommodation set predominantly to the ground floor, with one bedroom to the first floor.

Price Guide:

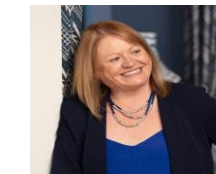
Guide Price £425,000





Ground floor - Entrance hallway and separate reception hallway with stairs to the first floor | Cloakroom/wc | Large sitting/dining room with full height vaulted and beamed ceiling, and excellent natural light from the picture window, doors and Roof lights | Superb open plan family kitchen/breakfast room with a range of cabinets, and integrated hob, oven and fridge/freezer | Utility room with plumbing for white goods. Ground floor family bedroom | Second ground floor double bedroom | Bathroom with bath, separate shower, WC and basin | Access to the Games room/double garage - a versatile space as a games room/gym or garage/workshop

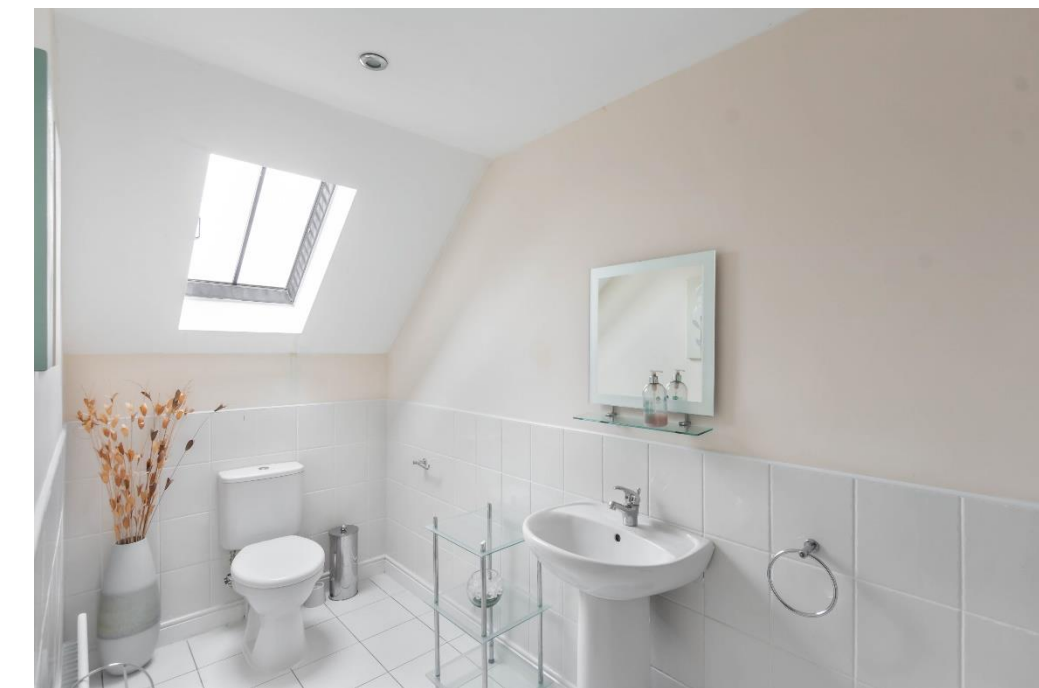
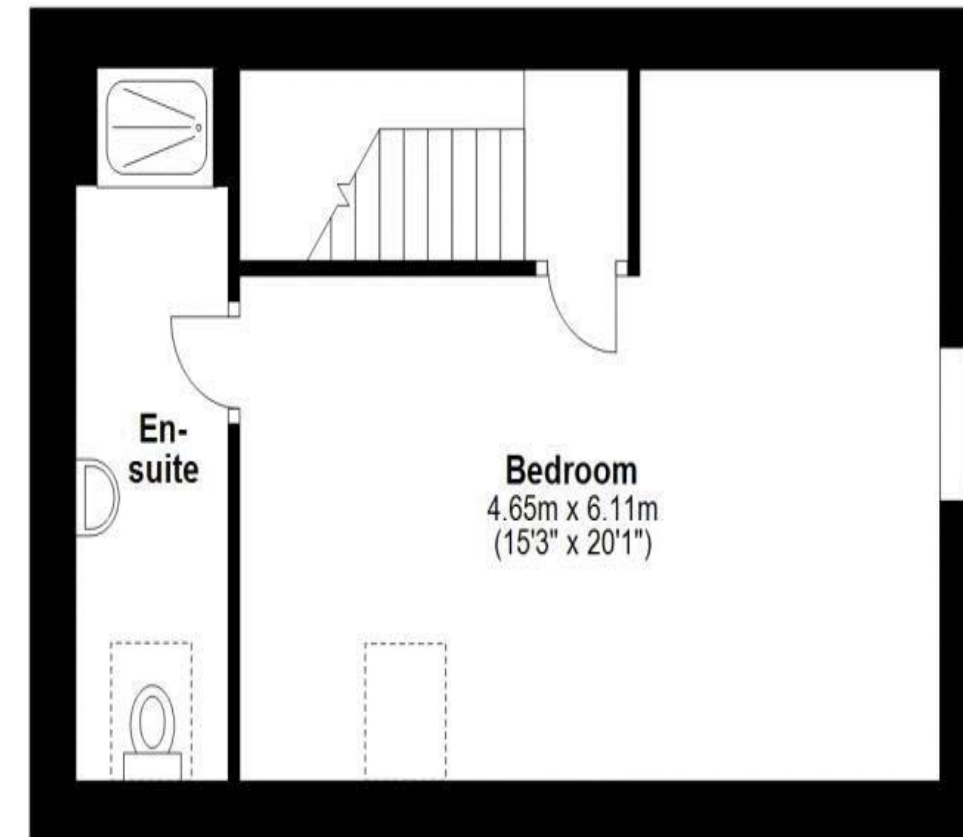
First floor - First floor landing | Large double bedroom with roof lights | Well appointed Ensuite shower room/wc



Alison Oxley
01665 600 170
alison.oxley@sandersonyoung.co.uk







Externally - Broadwood has allocated parking for two cars to the rear | There is a decked terrace seating area, perfect for outside dining | Large integral double garage, currently utilised as a Games room/storage, with two double timber garage doors.

Services: Mains Electric & Water | Oil Central Heating | Septic Tank | Tenure: Freehold | Council Tax: Band F | EPC: D

Total area: approx. 174.6 sq. metres (1879.6 sq. feet)

Broadwood House

Tughall Steads

