



West Lodge

Netherton



SANDERSON
YOUNG



West Lodge
Netherton, Morpeth, Northumberland,
NE65 7EY

Fabulous two bedroom barn conversion in Netherton, on the edge of the Northumberland National Park, located in the Burnfoot Holiday Cottage farm steading - successful commercial holiday let with wood burning stove, beamed vaulted ceiling and paved patio outside space. NO UPWARD CHAIN

West Lodge is ideally placed for easy access to the Northumberland National Park, Rothbury & Craggside, Alnwick Castle & Garden, as well as the Northumbrian Heritage coastline with Bamburgh, Craster and Seahouses. The single storey cottage, converted from the original Hay Store from the hemmel is ideal as main home, second home or holiday let, with lovely traditional features including beamed vaulted ceilings in the open plan living room/kitchen, a cast iron wood burning stove, and original barn windows/ventilation openings.

Price Guide:

Guide Price £195,000

 2  1  1  D





Accommodation - Porch/boot room | Superb open plan living space with dining area and fitted kitchen, and excellent natural light from the west facing full height picture window to the side - living room with beamed vaulted ceiling, wood burning stove set into an attractive fireplace | Kitchen fitted with a range of cabinets, with solid wood worktops, with integrated appliances - oven, hob & extractor, fridge/freezer, dishwasher and microwave | Bedroom hallway | Bedroom one with French doors opening to the gravelled patio area to the front | Twin bedroom two | Well appointed bathroom with a bath with shower over, WC and basin.

Externally - there is a small patio area to the front leading from bedroom one, and additional small gravelled seating area to the side off the living room.

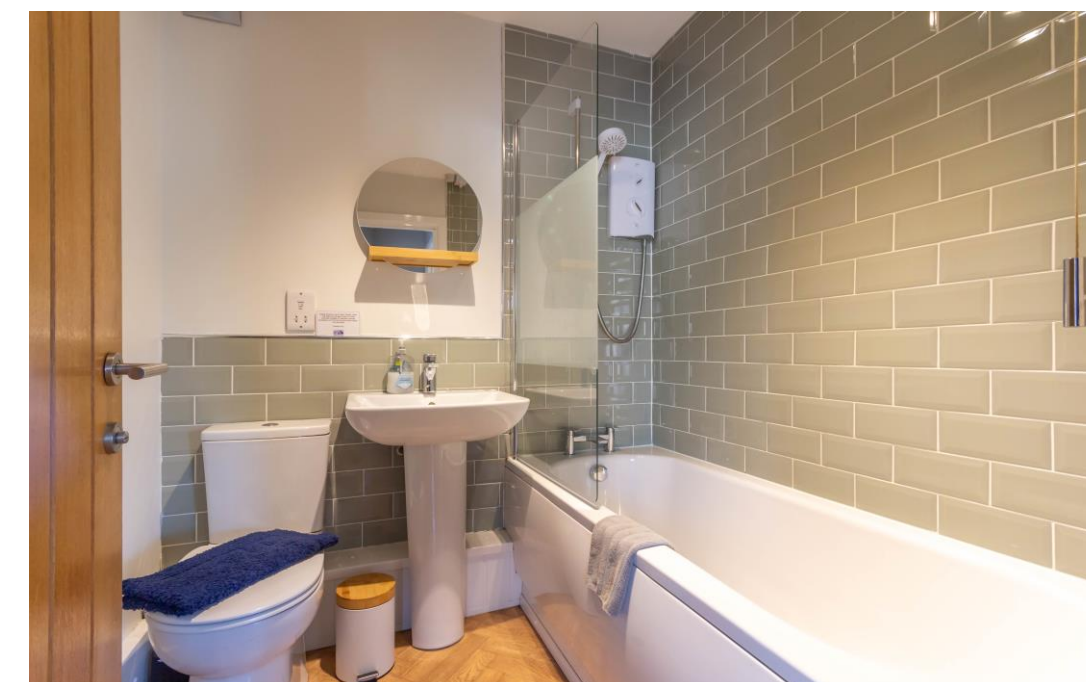
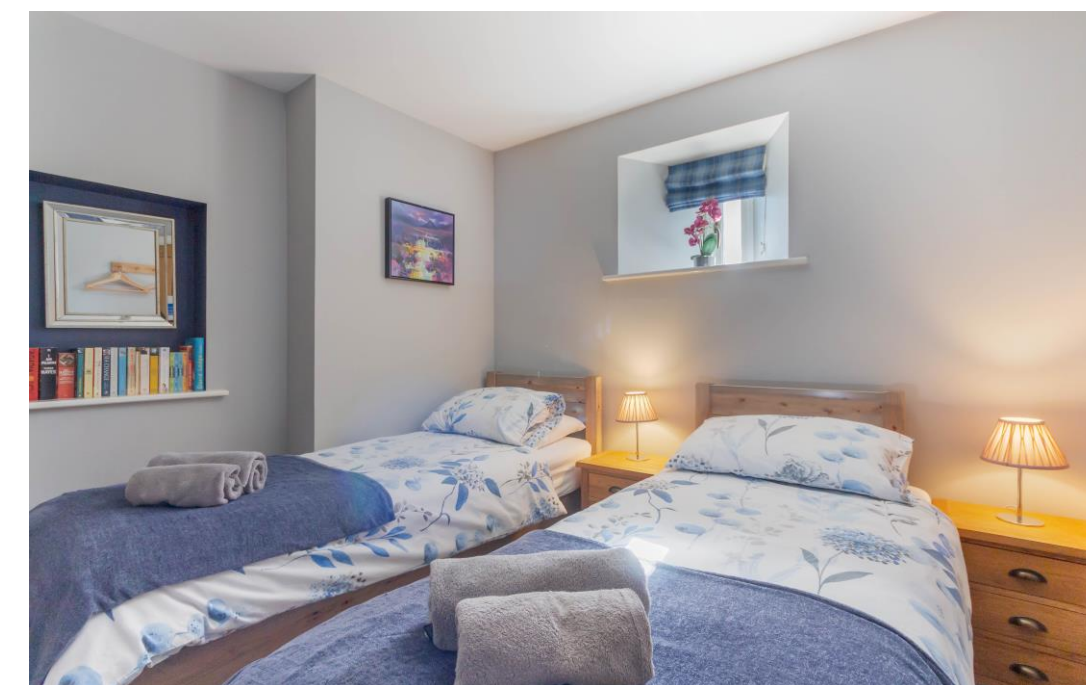
Located on the edge of the Northumberland National Park, the former farm steading of luxury self catering holiday cottages/barns has uninterrupted views to the Cheviot Hills, with burns close by and beautiful walks surrounding the family owned holiday development.

Link to Holiday Letting Agent:
<https://www.burnfootholidaycottages.co.uk/northumberland-holiday-cottages/west-lodge/>

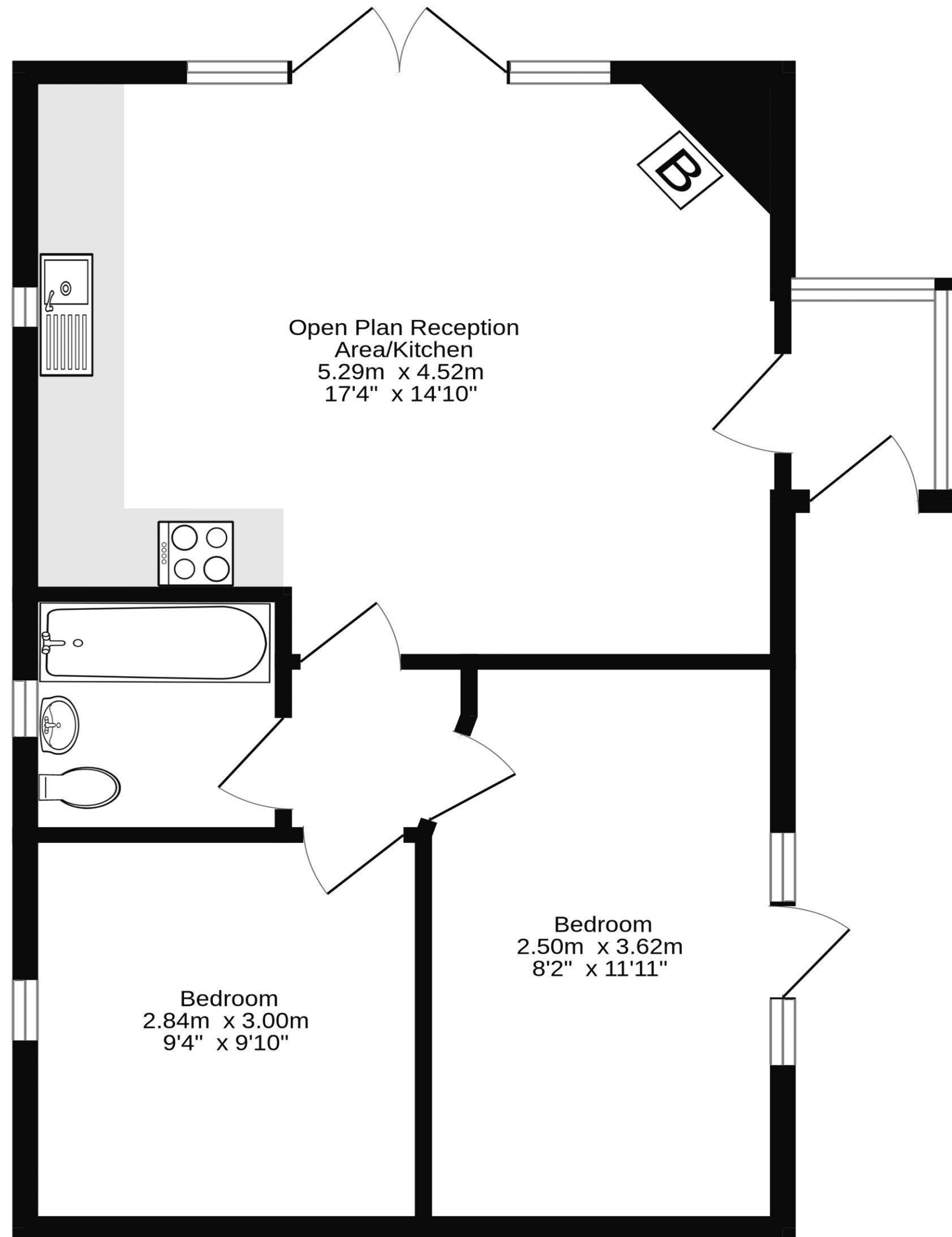
Services: Mains Electric, Water | Electric Storage Heater | Tenure: Freehold | Council Tax: Small Business Rates | EPC: D



Alison Oxley
01665 600 170
alison.oxley@sandersonyoung.co.uk



Ground Floor
48.4 sq.m. (521 sq.ft.) approx.



TOTAL FLOOR AREA : 48.4 sq.m. (521 sq.ft.) approx.

Whilst every attempt has been made to ensure the accuracy of the floorplan contained here, measurements of doors, windows, rooms and any other items are approximate and no responsibility is taken for any error, omission or mis-statement. This plan is for illustrative purposes only and should be used as such by any prospective purchaser. The services, systems and appliances shown have not been tested and no guarantee as to their operability or efficiency can be given.
Made with Metropix ©2024

West Lodge

Netherton

