






WOTTON COURT 2 ROLFE TERRACE SE18
£2,350 PER MONTH AVAILABLE 15/07/2025

Hamptons
THE HOME EXPERTS

{ THE PARTICULARS

Wotton Court 2 Rolfe Terrace SE18

£2,350 Per Month
Furnished

 2 Bedrooms
 2 Bathrooms
 1 Reception

Features

- Two Bedroom Apartment, - Open-Plan, -
Integrated Kitchen, - High Specification, -
Superb Location, - Council Tax Band D, -
Parking at Request

Council Tax

Council Tax Band D

Hamptons
www.hamptons.co.uk

{ SPACIOUS 2 BEDROOM FLAT AVAILABLE FOR RENT

The Property

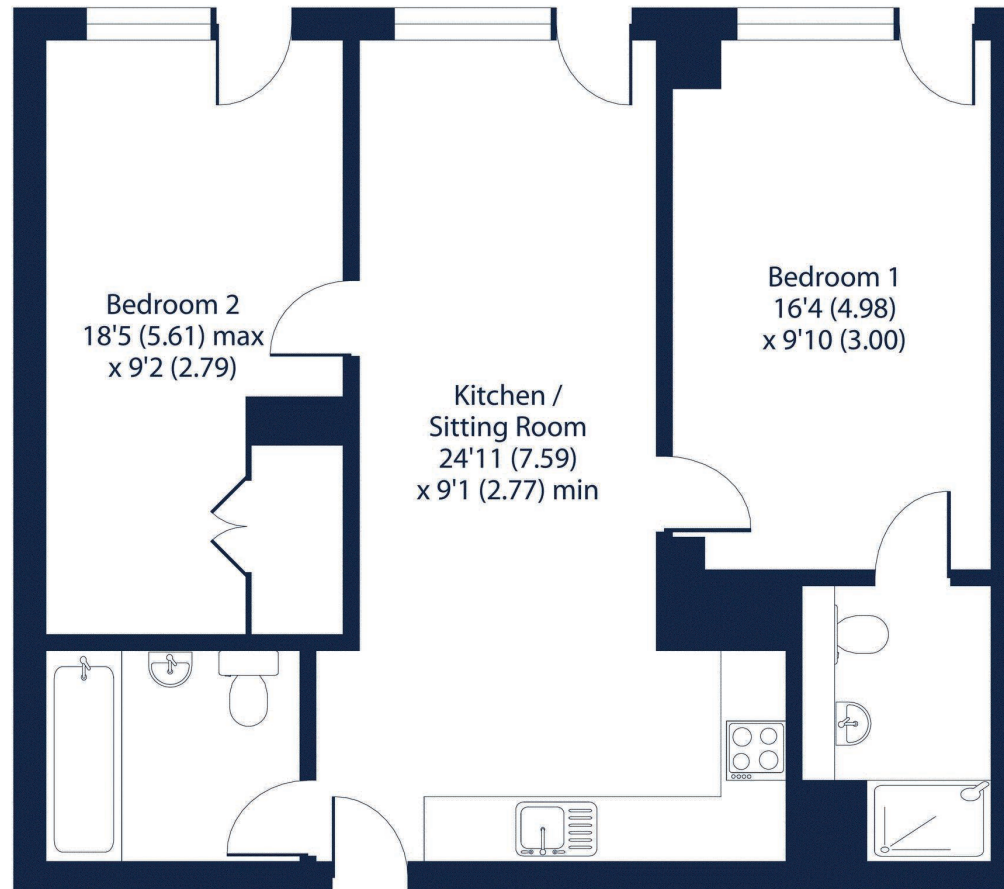
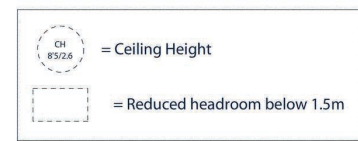
Step into contemporary comfort with this spacious two-bedroom apartment, ideally located just moments from Woolwich Arsenal Station. Thoughtfully designed and finished to a high specification, this stylish home seamlessly combines sophistication, practicality, and convenience. The expansive open-plan living and kitchen area is perfect for both relaxing and entertaining, complete with sleek integrated appliances and generous space for dining and socialising. Whether you're commuting to the City or Canary Wharf, excellent transport links via National Rail and DLR put central London within easy reach. Enjoy the vibrant lifestyle that surrounds you, with a wealth of local amenities, cafés, restaurants, shops, and green spaces, right on your doorstep.



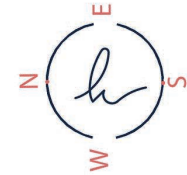
Vicarage Grove, Eccles, Manchester, M30

Approximate Area = 738 sq ft / 68.6 sq m

For identification only - Not to scale



FIRST FLOOR



Floor plan produced in accordance with RICS Property Measurement 2nd Edition, Incorporating International Property Measurement Standards (IPMS2 Residential). © n:checom 2025. Produced for Hamptons. REF: 1273303

For Clarification

We wish to inform prospective tenants that we have prepared these particulars as a general guide and they have been confirmed as accurate by the landlord. We have not verified permissions, nor carried out a survey, tested the services, appliances and specific fittings. Room sizes are approximate and measurement figures rounded: they are taken between internal wall surfaces and therefore include cupboards/shelves, etc. Accordingly, they should not be relied upon for

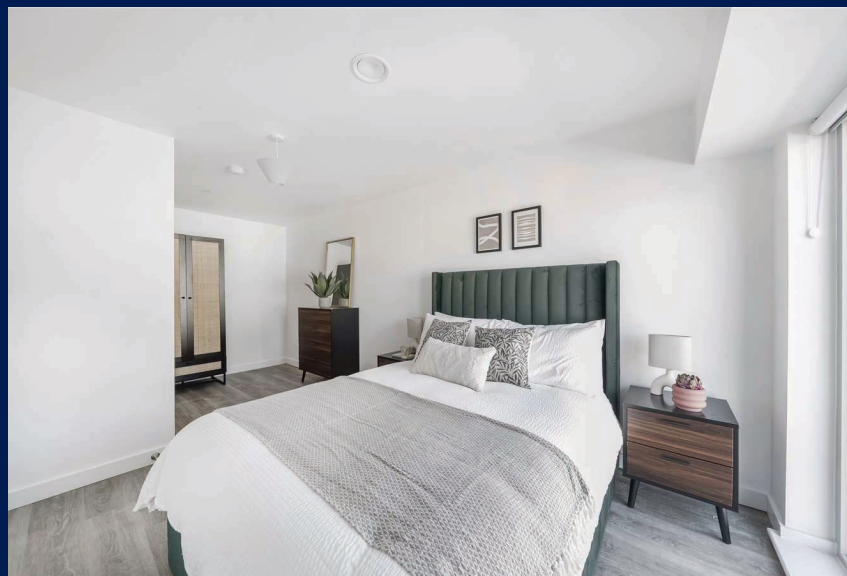
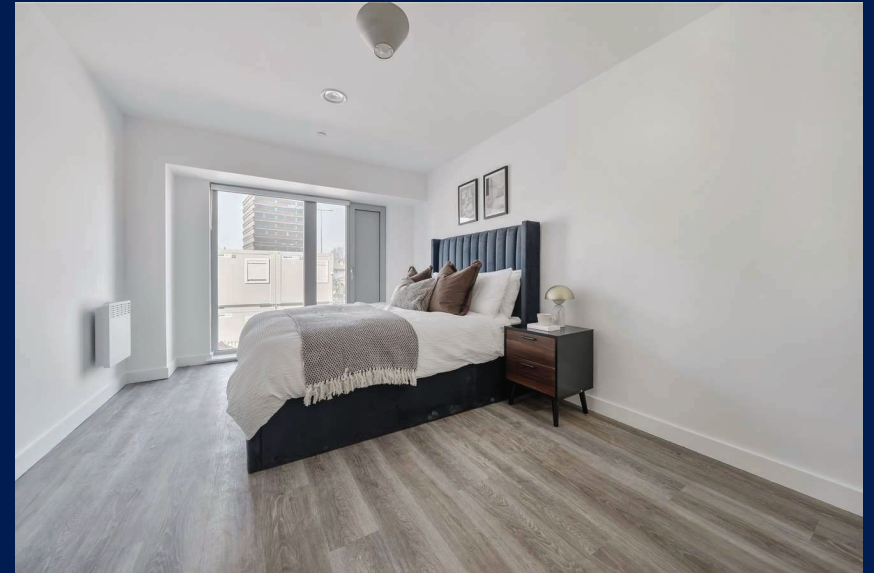
carpets and furnishings. It should also be noted that all fixtures and fittings, carpeted, curtains/blinds, kitchen equipment and garden statuary, whether fitted or not, are deemed removable by the landlord unless specifically itemised with these particulars. Please enquire in office or on our website for details on holding deposit and tenancy deposit figures.

Energy Efficiency Rating

EPC Pending

England & Wales

EU Directive
2002/91/EC



Awaiting Photograph