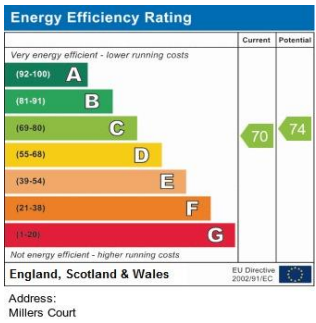
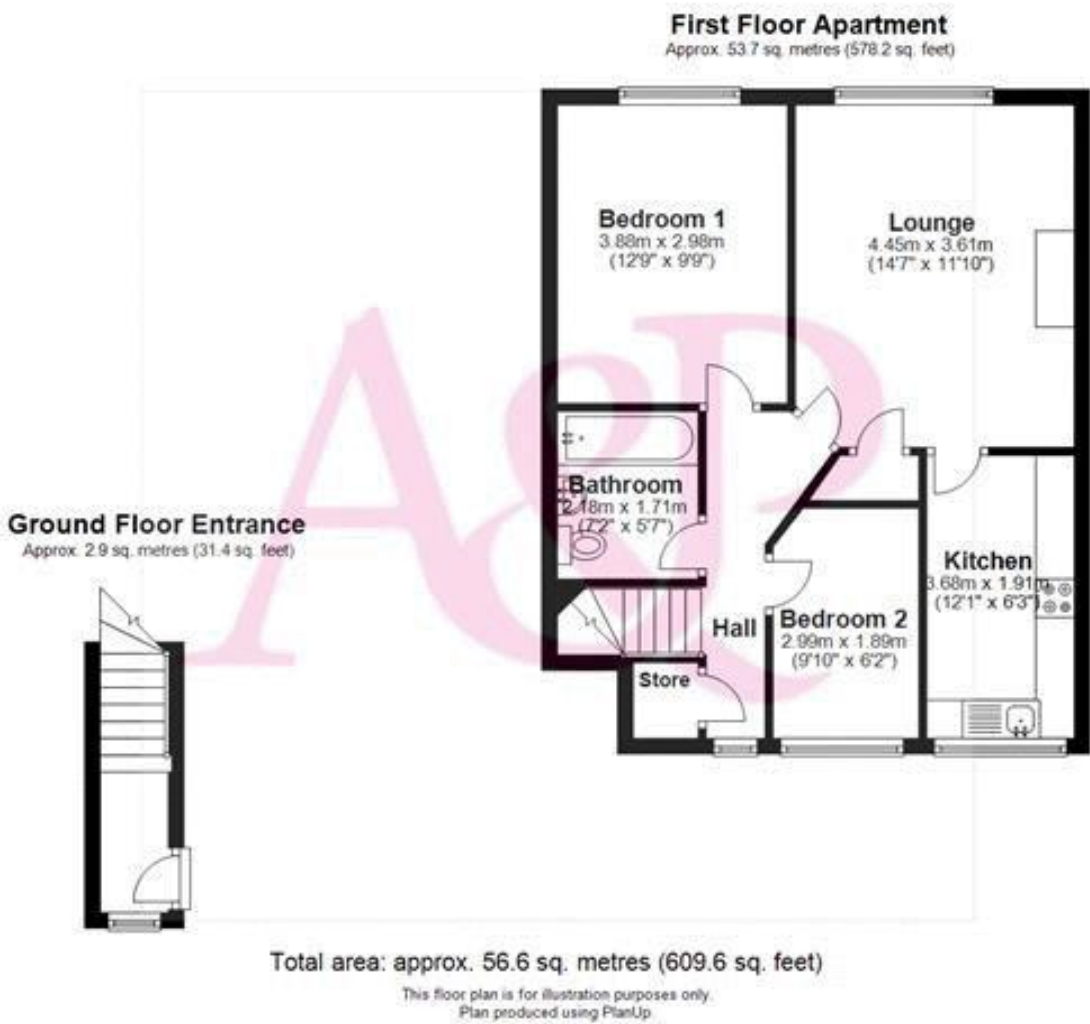
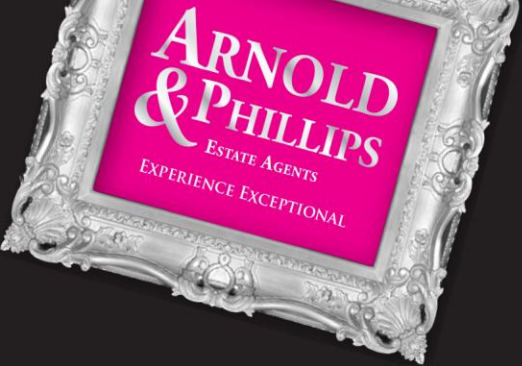




Millers Court, Ormskirk

Millers Court, Ormskirk



01695 570102

enquiries@arnoldandphillips.com

arnoldandphillips.com

Asking Price £54,000

arnoldandphillips.com

Every care has been taken with the preparation of this Sales Brochure but it is for general guidance only and complete accuracy cannot be guaranteed. If there is any point, which is of particular importance professional verification should be sought. This Sales Brochure does not constitute a contract or part of a contract. We are not qualified to verify tenure of property. Prospective purchasers should seek clarification from their solicitor or verify the tenure of this property for themselves by visiting www.landregisteronline.gov.uk. The mention of any appliances, fixtures or fittings does not imply they are in working order. Photographs are reproduced for general information and it cannot be inferred that any item shown is included in the sale. All dimensions are approximate.

Sited on this attractive development along leafy Ruff Lane, just outside Ormskirk town centre, is this delightful first floor apartment. The property offers a fantastic opportunity for clients in the "Over 55's" being available on a 50% shared ownership basis, bringing it in to a very affordable price bracket in a location which rarely provides housing at this type of price level. The apartment provides a cost effective and carefree way of life and is well presented throughout.

Accommodation briefly comprises entrance hall with built in storage cupboard, intercom entry and stairs to the first floor where there are two good sized bedrooms and a cosy lounge with an attractive feature fireplace and aspects overlooking the well-kept communal gardens. Just off the landing area is a three-piece family bathroom which includes a low-level WC, pedestal wash hand basin and a panelled bath. The fitted kitchen includes an array of wall and base units with ample workspace and space for appliances.

The external areas include communal gardens and allocated parking. The property is subject to a maintenance charge which includes care of the gardens, hallways and covers buildings insurance. Full details can be obtained from our offices. The property is situated within walking distance of the railway station and is perfectly located to enjoy all that Ormskirk has to offer including its bustling market, leisure facilities, and excellent shopping. The M58 motorway is only a short drive making this an ideal home for the commuter.

