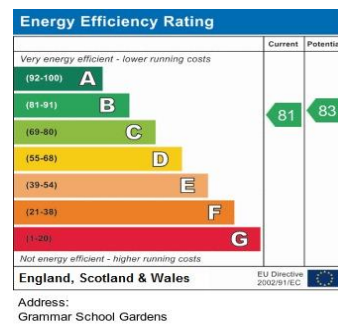
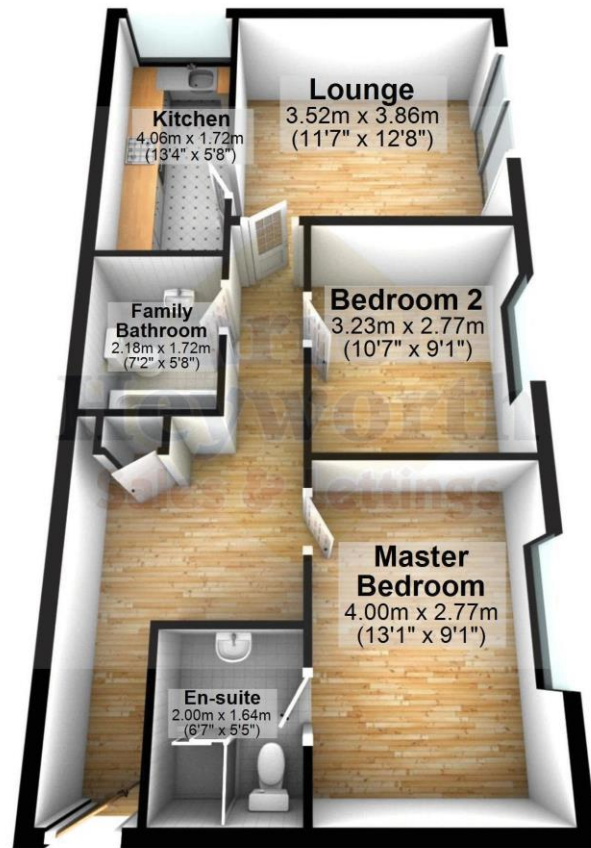


Grammar School Gardens, Ormskirk



Grammar School Gardens, Ormskirk



01695 570102
enquiries@arnoldandphillips.com

arnoldandphillips.com

Asking Price £82,000

Every care has been taken with the preparation of this Sales Brochure but it is for general guidance only and complete accuracy cannot be guaranteed. If there is any point, which is of particular importance professional verification should be sought. This Sales Brochure does not constitute a contract or part of a contract. We are not qualified to verify tenure of property. Prospective purchasers should seek clarification from their solicitor or verify the tenure of this property by visiting www.landregisteronline.gov.uk. The mention of any appliances, fixtures or fittings does not imply they are in working order. Photographs are reproduced for general information and it cannot be inferred that any item shown is included in the sale. All dimensions are approximate.

arnoldandphillips.com

This modern two-bedroom first floor apartment is set in a much sought-after location and is represented with a 50% shared ownership. Accommodation highlights include, lounge, fitted kitchen, two good-sized bedrooms (master with en-suite) and family bathroom. Externally, there are well-tended communal gardens.

Situated close to Ormskirk town centre with all its amenities, restaurants and bars, the apartment is currently part of Onward Housing Group shared ownership scheme at a 50% share. A further 25% share may be available subject to qualifying by Onward housing group.

