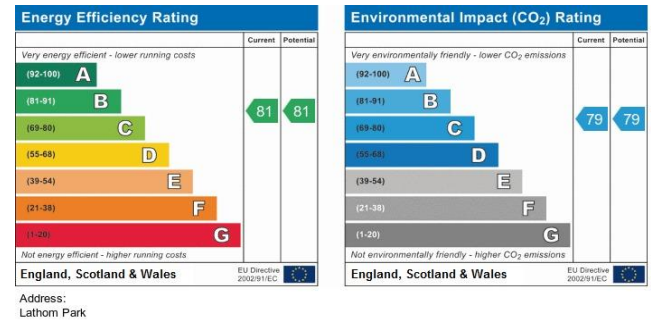
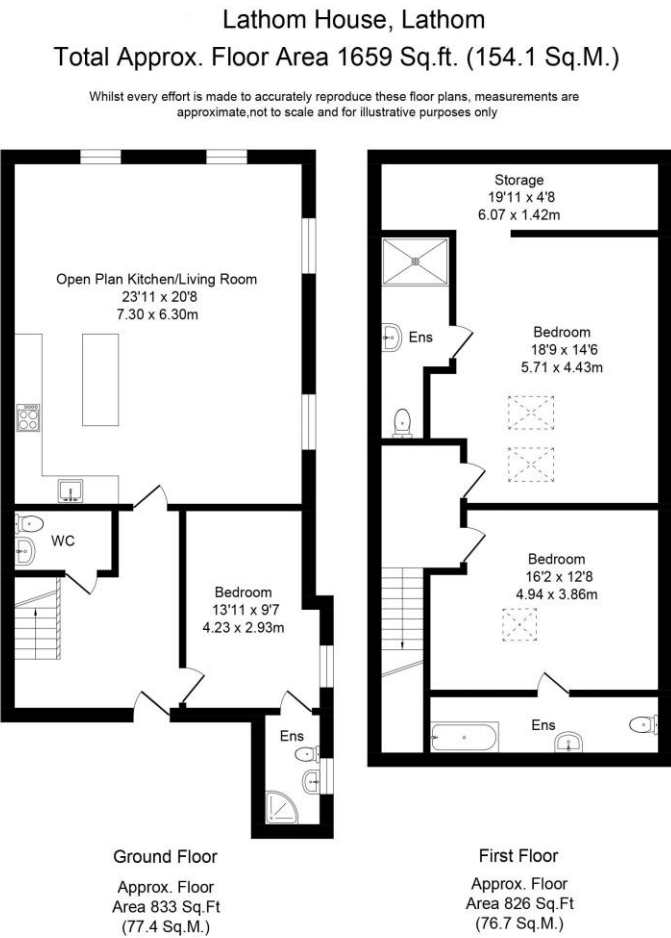




Lathom Park, Lathom



Lathom Park, Lathom



01695 570102
enquiries@arnoldandphillips.com

arnoldandphillips.com

Offers Over £340,000

arnoldandphillips.com

Every care has been taken with the preparation of this Sales Brochure but it is for general guidance only and complete accuracy cannot be guaranteed. If there is any point, which is of particular importance professional verification should be sought. This Sales Brochure does not constitute a contract or part of a contract. We are not qualified to verify tenure of property. Prospective purchasers should seek clarification from their solicitor or verify the tenure of this property for themselves by visiting www.landregisteronline.gov.uk. The mention of any appliances, fixtures or fittings does not imply they are in working order. Photographs are reproduced for general information and it cannot be inferred that any item shown is included in the sale. All dimensions are approximate.

Architectural treasures, a slice of gracious living where memories can be made. Lose the crowds and gain a whole new world of luxury in one of the most beautiful parts of Lancashire. This beautiful, three-bedroom, duplex penthouse apartment forms part of the west wing of Lathom Hall and offers elegant simplicity that will appeal to those that appreciate beautiful architecture, history and culture...

This is arguably one of the finest locations in West Lancashire, and the approach to the property is simply breath taking with long a sweeping drive towards a handsome stone-built residence which dates back to 1730. The building's impressive neo-classical facade offers a fine introduction to what is now a classic piece of English heritage and the properties position on an elevated plain provides the perfect retreat from the hustle and bustle of daily life. This building is set around an attractive courtyard, tucked away on a private estate amongst 5 acres of land and gardens. Step inside and you'll be transported back to another time and place to a home that is rafter-high in charm with, a pigeon tower, sash windows, beautiful stonework, high ceilings and an elegant communal reception which greets guests and makes a truly wonderful first impression.

The apartment commands lovely aspects over the central courtyard and provides a wealth of outstanding living space extending to over 1650 square feet. Its flowing floor plan is arranged over two inviting levels and offers a very high standard of finish throughout having recently been completed by a well-regarded local property developer. Highlights include stairs or elevator access to an entrance hallway which leads through to a wonderful open plan family living room, kitchen and dining area, with the bespoke fitted kitchen providing an array of quality integrated appliances. The lower level of the apartment is rounded off with a double bedroom and a modern three-piece bathroom. On the top level there are two further double bedrooms which both have their own stylish, three-piece en-suites.

Externally the property has beautiful communal gardens, a central courtyard, ample private and guest parking along with a single detached garage. Country pursuits and canal walks, a bustling market town, pretty villages and historic sites are all on your doorstep. This tucked away gem is set in rolling countryside under clear starry skies and is just 20-minute drive from the coastline. Lathom Park is a beautiful, well managed site with a healthy management company run by the owners for the benefit of the owners. Management fees available upon request. There is no ground rent payable for this property.





