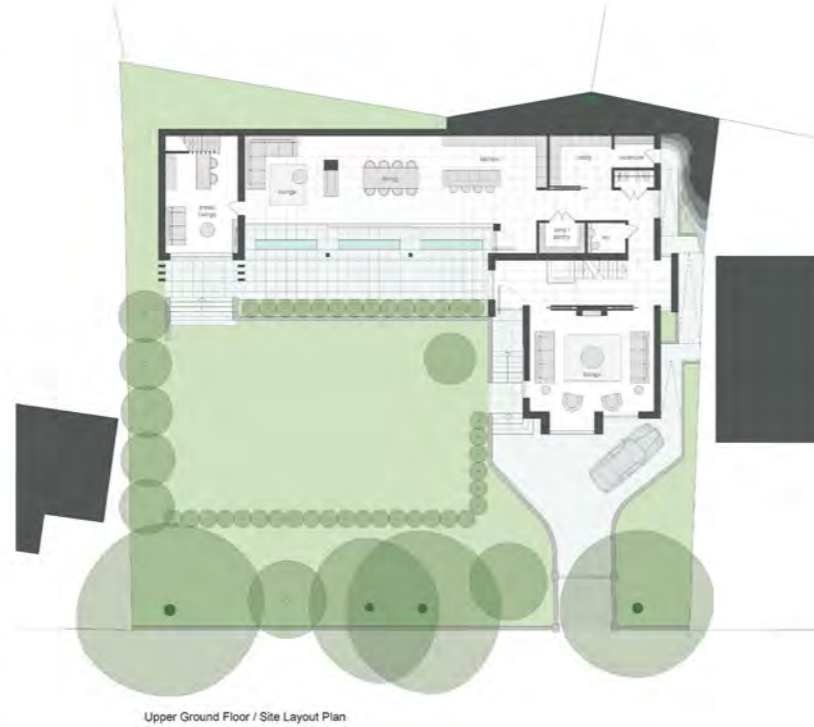




Ormskirk: 01695 570102  
 Southport: 01704 778668  
 arnoldandphillips.com

Parbold: 01257 442789  
 Chorley: 01257 241173



Every care has been taken with the preparation of these property details but they are for general guidance only and complete accuracy cannot be guaranteed. If there is any point, which is of particular importance professional verification should be sought. These property details do not constitute a contract or part of a contract. We are not qualified to verify tenure of property. Prospective purchasers should seek clarification from their solicitor or verify the tenure of this property for themselves by visiting [www.landregisteronline.gov.uk](http://www.landregisteronline.gov.uk). The mention of any appliances, fixtures or fittings does not imply they are in working order. Photographs are reproduced for general information and it cannot be inferred that any item shown is included in the sale. All dimensions are approximate.



A unique once in a generation opportunity to create a legacy residence at what is considered the finest address in the region. This premier plot with potential for a magnificent four level architectural home offers buyers the chance to create something truly special which when completed will be world class in every way.

This ultra sleek five bedroom detached residence displays a stunning contemporary design that will blend perfectly with its natural surroundings and will provide quite breath taking indoor and outdoor living spaces. The home will include almost every amenity possible with a large gym, home theatre, swimming pool and leisure complex along with a contemporary chefs' kitchen, guest space, sauna, steam room, spa, five contemporary bathrooms, wine pantry, garage space and turntable parking. The outside space will offer fabulous private gardens with an outdoor bar, kitchen and entertaining space.

When completed, this one-of-a-kind masterpiece will surely be the premier property in an area characterised by luxury prestige homes which offer ultimate privacy, and the advantage of excellent amenities and highly regarded schools all close by. Ormskirk's bustling town centre is on hand and the railway station is a short drive as is M58 motorway. The property will be well placed within striking distance of Liverpool and other surrounding commercial centres. The detailed plans are available to view at our Ormskirk branch or for more information please contact David Arnold on 01695 570102.

