



ESTATE AGENTS

... the key to a successful move



Dolespring Close, Forsbrook, Stoke-On-Trent, ST11 9DD

**Offers in the
region of
£250,000**

* THREE BEDROOM LINK DETACHED * NO CHAIN

* LOUNGE * DINING ROOM

* SUPERB POTENTIAL

* AMPLE OFF ROAD PARKING * GARAGE

* GARDENS FRONT AND REAR

w: www.keysestateagents.co.uk

Dolespring Close, Forsbrook, Stoke-On-Trent,

ACCOMMODATION

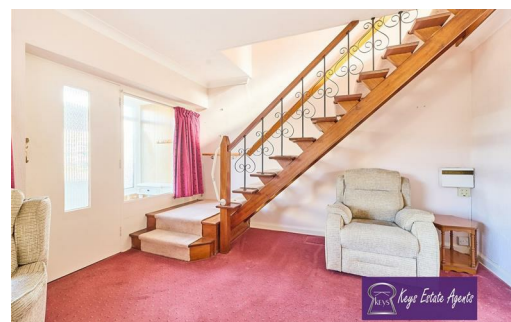
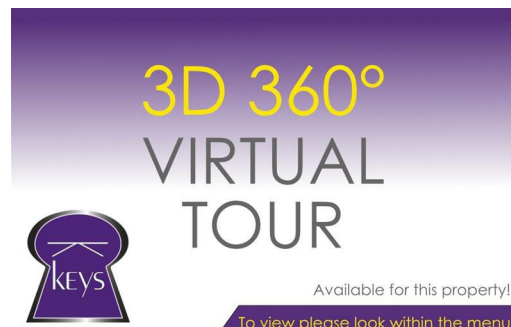
DESCRIPTION

A fantastic family home located on Dolespring Close, Forsbrook, Stoke-On-Trent, this delightful detached house presents an excellent opportunity for those seeking a family home in a great location. Entrance porch, lounge, dining room, kitchen and utility area and to the first floor boasting three spacious bedrooms and a family bathroom, this property is perfect for families looking to settle in a friendly neighbourhood.

While the house does require some updating, it offers a blank canvas for potential buyers to personalise and create their dream living space. The absence of a chain ensures a smooth and efficient purchasing process, allowing you to move in without unnecessary delays.


One of the standout features of this property is the good-sized garden, providing ample outdoor space for children to play, gardening enthusiasts to flourish, or simply for enjoying the fresh air during the warmer months.


This home is not just a property; it is a place where memories can be made and cherished. With its promising potential and desirable location, this detached house is an opportunity not to be missed. Whether you are a first-time buyer or looking to upsize, this residence offers the perfect setting for a growing family.



Dolespring Close, Forsbrook, Stoke-On-Trent,



Energy Efficiency Rating		
	Current	Potential
Very energy efficient - lower running costs		
(92 plus) A		
(81-91) B		
(69-80) C		
(55-68) D		
(39-54) E		
(21-38) F		
(1-20) G		
Not energy efficient - higher running costs		
England & Wales	EU Directive 2002/91/EC	

Environmental Impact (CO ₂) Rating		
	Current	Potential
Very environmentally friendly - lower CO ₂ emissions		
(92 plus) A		
(81-91) B		
(69-80) C		
(55-68) D		
(39-54) E		
(21-38) F		
(1-20) G		
Not environmentally friendly - higher CO ₂ emissions		
England & Wales	EU Directive 2002/91/EC	

For illustration purposes only. Do not scale.



Ground Floor



First Floor

Dolespring Close, Forsbrook FLOOR PLAN



Keys Independent Estate Agents Ltd for themselves and for the vendors of this property whose agents they are given notice that (i) the particulars are set out as general outline only for the guidance of intending purchasers, and do not constitute, nor constitute part of, an offer or contract; (ii) all descriptions, dimensions, references to condition and necessary permissions for use and occupation, and other details are given without responsibility and any intending purchases should not rely on them as statements or representations of fact but must satisfy themselves by inspection or otherwise as to the correctness of each of them; (iii) no person in the employment of Keys Independent Estate Agents Ltd has any authority to make or give any representation or warranty whatsoever in relation to this property. Keys Estate Agents is the Marketing name of Keys Independent Estate Agents. Registered in England, Reg no.4554970 Directors: Danny Mayer, James Havill.

YOU HOME IS AT RISK IF YOU DO NOT KEEP UP REPAYMENTS ON A MORTGAGE OR OTHER LOAN SECURED ON IT
Written quotations of credit terms available on request. A life assurance policy may be required