



# ESTATE AGENTS

*... the key to a successful move*



**Uttoxeter Road, Blythe Bridge, Stoke-On-Trent, ST11 9NT**

**Offers in the  
region of  
£270,000**

\* GREAT FAMILY HOME \* THREE BED SEMI DETACHED HOUSE

\* PORCH \* LOUNGE \* DINING ROOM

\* KITCHEN \* CLOAKS

\* BATHROOM

\* LARGE DRIVE

\* FRONT AND REAR GARDEN \* GARAGE

**w: [www.keysestateagents.co.uk](http://www.keysestateagents.co.uk)**

# Uttoxeter Road, Blythe Bridge, Stoke-On-Trent,

## ACCOMMODATION

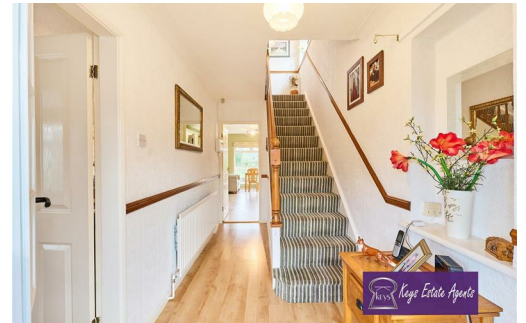
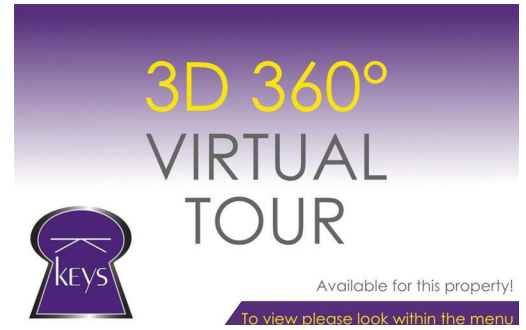
### DESCRIPTION

Welcome to this fantastic semi-detached house located on Uttoxeter Road in the picturesque village of Blythe Bridge, Stoke-On-Trent. This delightful property boasts entrance hall, lounge, dining room, kitchen and cloaks. To the first floor are good sized bedrooms and a family bathroom, making it perfect for families looking for a new home.

As you step inside, you'll be greeted by a spacious interior that is ready to move into, allowing you to settle in effortlessly. The property offers stunning views to the rear, providing a peaceful and serene backdrop to your daily life.


One of the most exciting features of this home is its huge potential. Whether you're looking to add your personal touch or expand the living space, this property offers endless possibilities to create the home of your dreams.


With its ideal location, ample space, and family-friendly layout, this semi-detached house on Uttoxeter Road is the perfect opportunity for those seeking a comfortable and welcoming home. Don't miss out on the chance to make this property your own and start creating lasting memories in this wonderful setting.



# Uttoxeter Road, Blythe Bridge, Stoke-On-Trent,



Energy Efficiency Rating		
	Current	Potential
Very energy efficient - lower running costs		
(92 plus) <b>A</b>		
(81-91) <b>B</b>		
(69-80) <b>C</b>		
(55-68) <b>D</b>		
(39-54) <b>E</b>		
(21-38) <b>F</b>		
(1-20) <b>G</b>		
Not energy efficient - higher running costs		
<b>England &amp; Wales</b>	EU Directive 2002/91/EC	

Environmental Impact (CO <sub>2</sub> ) Rating		
	Current	Potential
Very environmentally friendly - lower CO <sub>2</sub> emissions		
(92 plus) <b>A</b>		
(81-91) <b>B</b>		
(69-80) <b>C</b>		
(55-68) <b>D</b>		
(39-54) <b>E</b>		
(21-38) <b>F</b>		
(1-20) <b>G</b>		
Not environmentally friendly - higher CO <sub>2</sub> emissions		
<b>England &amp; Wales</b>	EU Directive 2002/91/EC	

For illustration purposes only. Do not scale.



Ground Floor



First Floor

## Uttoxeter Road, Blythe Bridge FLOOR PLAN



Keys Independent Estate Agents Ltd for themselves and for the vendors of this property whose agents they are given notice that (i) the particulars are set out as general outline only for the guidance of intending purchasers, and do not constitute, nor constitute part of, an offer or contract; (ii) all descriptions, dimensions, references to condition and necessary permissions for use and occupation, and other details are given without responsibility and any intending purchasers should not rely on them as statements or representations of fact but must satisfy themselves by inspection or otherwise as to the correctness of each of them; (iii) no person in the employment of Keys Independent Estate Agents Ltd has any authority to make or give any representation or warranty whatsoever in relation to this property. Keys Estate Agents is the Marketing name of Keys Independent Estate Agents. Registered in England, Reg no.4554970 Directors: Danny Mayer, James Havill.

YOU HOME IS AT RISK IF YOU DO NOT KEEP UP REPAYMENTS ON A MORTGAGE OR OTHER LOAN SECURED ON IT  
Written quotations of credit terms available on request. A life assurance policy may be required