



Latimer Drive, Hornchurch

£1,400 pcm

TWO BEDROOMS • MODERN FLAT WITH NEUTRAL DECOR • FULLY FITTED KITCHEN • DOUBLE GLAZING •
AMPLE PARKING • CLOSE TO STATION • EPC - C



TWO BEDROOM FLAT is offered for rent, ideally located close to Hornchurch District Line Station. The flat is situated on the first floor of a well kept block and offers ample parking and communal gardens.

The accommodation has a good size lounge with laminate flooring, a Fully fitted kitchen with appliances. The property has one double bedroom and one single bedroom. The bathroom is tiled throughout with a overhead shower.

The flat has been maintained to a good standard. The décor is neutral and the fixtures are modern.

Tenancy Deposit - £1,615.00

EPC Rating: C

Council Tax Band: C

Initial Tenancy Term: 12 months



Lounge

14' 1" x 12' 11" (4.29m x 3.94m)

Kitchen

11' 5" x 6' 11" (3.49m x 2.12m)

Bedroom One

12' 2" x 9' 8" (3.70m x 2.95m)

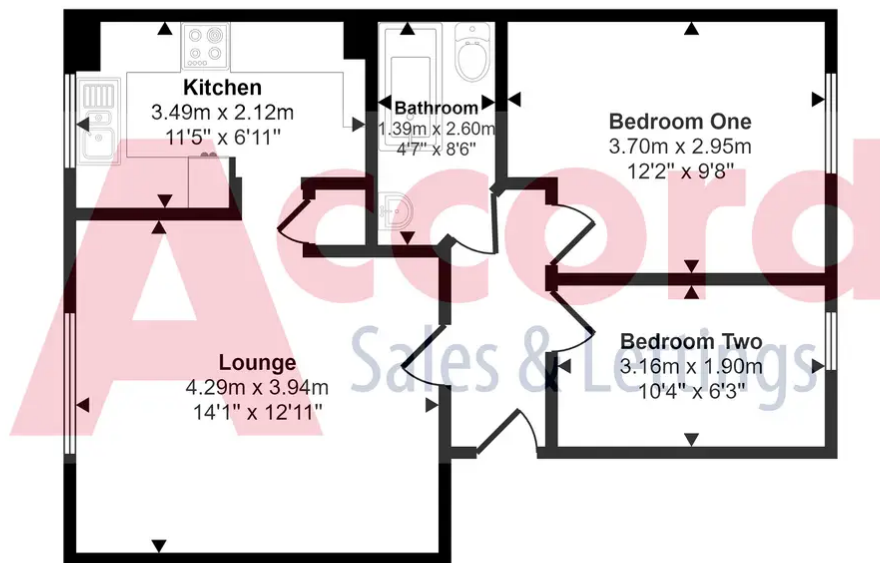
Bedroom Two

10' 4" x 6' 3" (3.16m x 1.90m)

Bathroom

4' 7" x 8' 6" (1.39m x 2.60m)





Floorplan

This floorplan is only for illustrative purposes and is not to scale. Measurements of rooms, doors, windows, and any items are approximate and no responsibility is taken for any error, omission or mis-statement. Icons of items such as bathroom suites are representations only and may not look like the real items. Made with Made Snappy 360.

You can include any text here. The text can be modified upon generating your brochure.