



**56b, 0 London Road**

**£1,600 pcm Leasehold**

No allocated parking • Two Bedroom Flat • Large Kitchen with appliances • Tenancy Deposit of £1845 • Council Tax Band A •  
0.5 Miles to Romford Train Station • EPC Rating - C • Initial Tenancy Term - 12 months





Accord is delighted to present this recently refurbished two-bedroom flat located just 0.5 miles from Romford Train Station. Nestled above commercial premises, this property offers convenience and modern living in equal measure. Boasting a large kitchen with appliances which include a fridge / freezer, washing machine, oven and electric hob. The flat is located 0.5 miles to Romford train station. The area also hosts several bus routes so tenants can enjoy the proximity to public transportation links.

Please note, there is no allocated parking for the flat.

The property is available immediately for a minimum initial tenancy term of 12 month. This flat presents a wonderful opportunity for those seeking a comfortable and centrally located residence. Contact us now to arrange a viewing and secure this desirable property for your new home.

Initial Tenancy Term - 12 Months

Council Tax Band - A

EPC Rating - C

Tenancy deposit - £1845.00

Council Tax band: A

Tenure: Leasehold

EPC Energy Efficiency Rating: C

EPC Environmental Impact Rating: E



### Lounge

11' 5" x 15' 10" (3.47m x 4.82m)

### Kitchen

12' 7" x 9' 9" (3.84m x 2.97m)

### Bedroom One

11' 2" x 10' 10" (3.40m x 3.29m)

### Bedroom Two

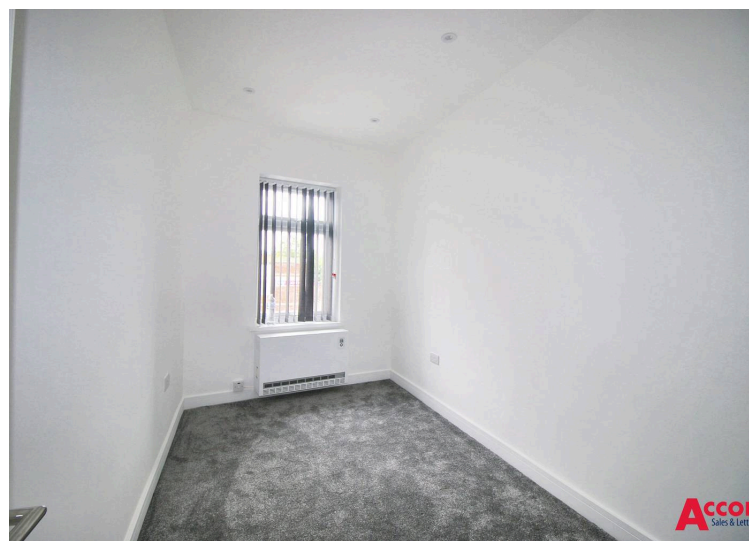
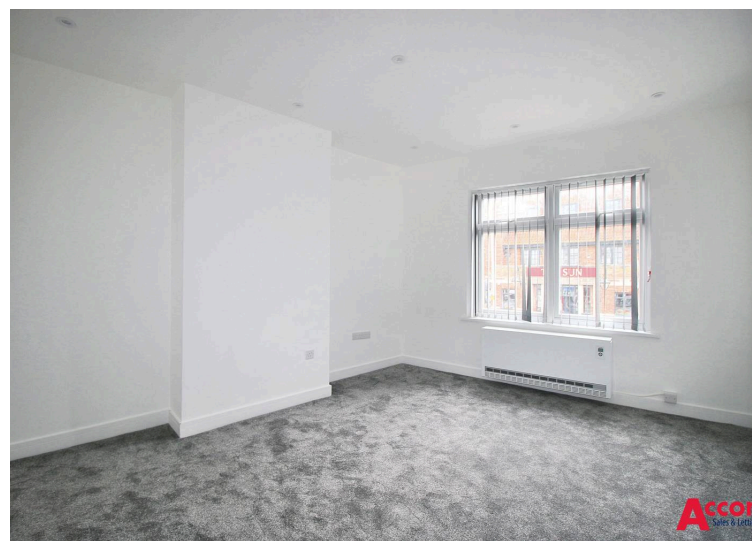
6' 11" x 13' 8" (2.11m x 4.16m)

### Bathroom

5' 7" x 5' 9" (1.71m x 1.76m)

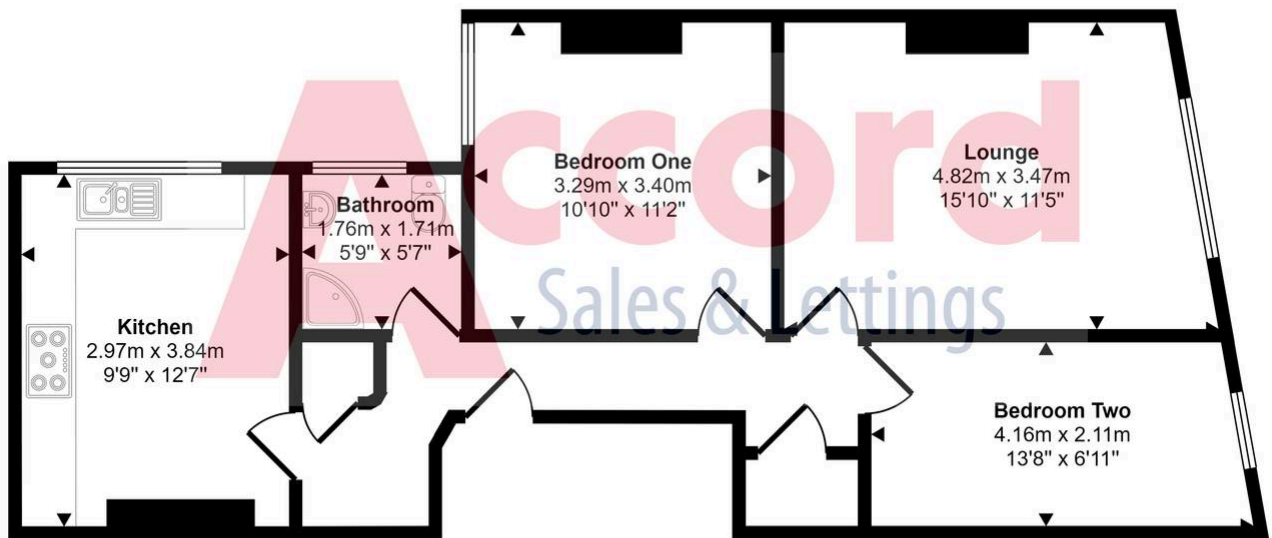








Approx Gross Internal Area  
61 sq m / 657 sq ft



Floorplan

This floorplan is only for illustrative purposes and is not to scale. Measurements of rooms, doors, windows, and any items are approximate and no responsibility is taken for any error, omission or mis-statement. Icons of items such as bathroom suites are representations only and may not look like the real items. Made with Made Snappy 360.

You can include any text here. The text can be modified upon generating your brochure.