

TO LET



Eagle Street, Hanley

3 Bedrooms, 2 Bathroom, Mid Terraced House

£995 pcm



Eagle Street, Hanley

3 Bedrooms, 2 Bathroom

£995 pcm

MODERN HOUSE WITH EN SUITE. Martin and co are delighted to offer for rent this modern 3 bedroom town house located in a sought after area within walking distance of Hanley town centre. The property benefits from parking to the front and a generous rear garden. Internally the property comprises to the ground floor a good sized lounge to the rear, downstairs wc and a kitchen breakfast room. To the first floor there are 3 bedrooms, the master having an en suite shower room, and a family bathroom.

Date available: 15th November 2025

Deposit: £1,148

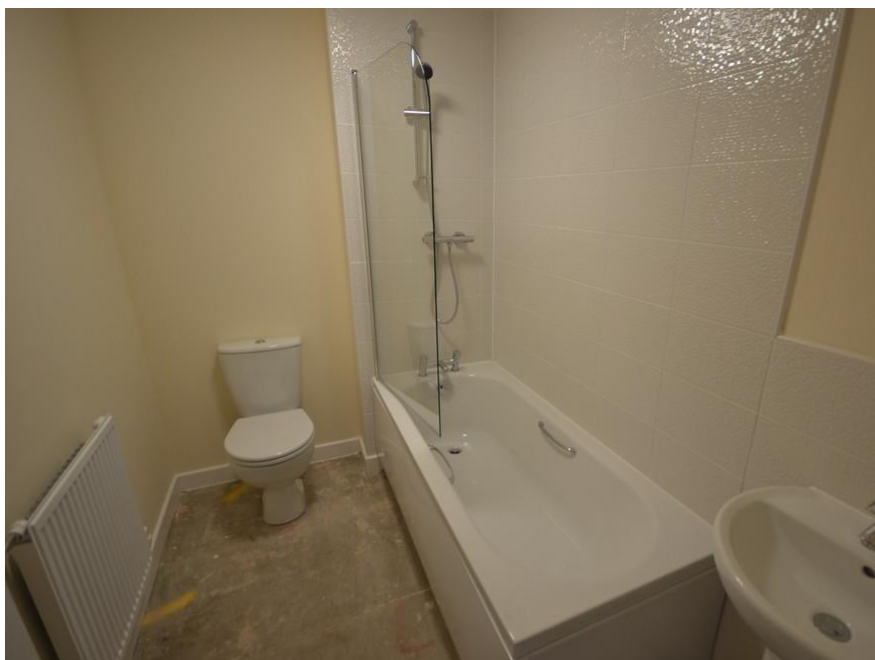
Unfurnished

Council Tax band: B

- Modern house
- Walking distance to Hanley
- Lounge
- Kitchen Diner
- Downstairs WC
- 3 Bedrooms
- En Suite Shower Room







Energy Efficiency Rating

	Current	Potential
Very energy efficient - lower running costs		
(92+) A		97
(81-91) B	85	
(69-80) C		
(55-68) D		



Martin & Co Stoke on Trent

12 Albion Street • Stoke-On-Trent • ST1 1QH

T: 01782 262880 • E: stokeontrent@martinco.com <http://www.martinco.com>

01782 262880



Accuracy: References to the Tenure of a Property are based on information supplied by the Seller. The Agent has not had sight of the title documents. A Buyer is advised to obtain verification from their Solicitor. Items shown in photographs including but not limited to carpets, fixtures and fittings are not included unless specifically mentioned within the sales particulars. They may however be available by separate negotiation. Buyers must check the availability of any property and make an appointment to view before embarking on any journey to see a property. No person in the employment of the agent has any authority to make any representation about the property, and accordingly any information given is entirely without responsibility on the part of the agents, sellers(s) or lessors(s). Any property particulars are not an offer or contract, nor for part of one. **Sonic / laser Tape:** Measurements taken using a sonic / laser tape measure may be subject to a small margin of error. **All Measurements:** All Measurements are Approximate. **Services Not tested:** The Agent has not tested any apparatus, equipment, fixtures and fittings or services and so cannot verify that they are in working order or fit for the purpose. A Buyer is advised to obtain verification from their Solicitor or Surveyor.