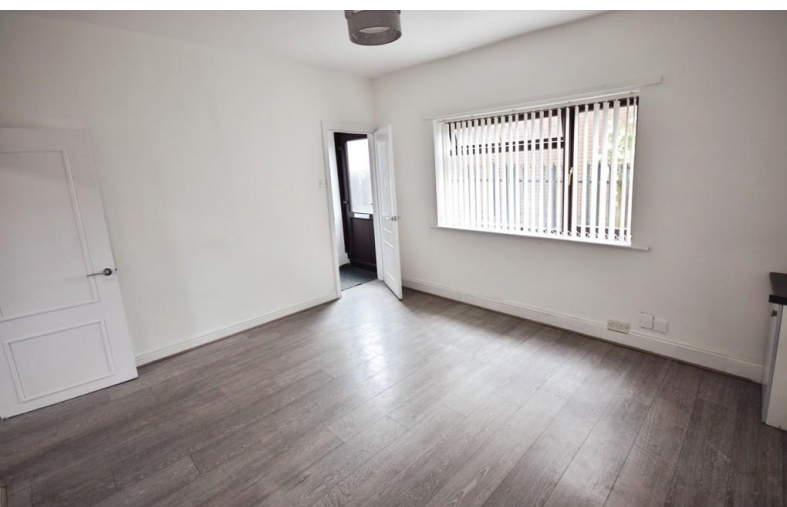


TO LET



Newleigh Street, Milton

1 Bedroom, 1 Bathroom, Terraced house

£600 pcm



Newleigh Street, Milton

Terraced house,
1 bedroom, 1 bathroom

£600 pcm

Date available: Available Now

Deposit: £721

Unfurnished

Council Tax band: A

- Unique 1 bedroom house
- Lounge
- Kitchen
- Wet room
- Walking distance from shops
- Short distance from Hanley town centre
- Council tax band A

UNIQUE 1 BEDROOM HOUSE. Martin and co offer for rent this unique 1 bedroom house located in the highly sought after area of Milton and is within walking distance from local shops. The property has been modernised and comprises a lounge, kitchen and a wet room to the ground floor and a double bedroom to the first floor. To the rear there is a shared yard area

%epcGraph_c_1_331%



Martin & Co Stoke on Trent

12 Albion Street • Stoke-On-Trent • ST1 1QH

T: 01782 262880 • E: stokeontrent@martinco.com <http://www.martinco.com>

01782 262880



Accuracy: References to the Tenure of a Property are based on information supplied by the Seller. The Agent has not had sight of the title documents. A Buyer is advised to obtain verification from their Solicitor. Items shown in photographs including but not limited to carpets, fixtures and fittings are not included unless specifically mentioned within the sales particulars. They may however be available by separate negotiation. Buyers must check the availability of any property and make an appointment to view before embarking on any journey to see a property. No person in the employment of the agent has any authority to make any representation about the property, and accordingly any information given is entirely without responsibility on the part of the agents, sellers(s) or lessors(s). Any property particulars are not an offer or contract, nor for part of one. **Sonic / laser Tape:** Measurements taken using a sonic / laser tape measure may be subject to a small margin of error. **All Measurements:** All Measurements are Approximate. **Services Not tested:** The Agent has not tested any apparatus, equipment, fixtures and fittings or services and so cannot verify that they are in working order or fit for the purpose. A Buyer is advised to obtain verification from their Solicitor or Surveyor.