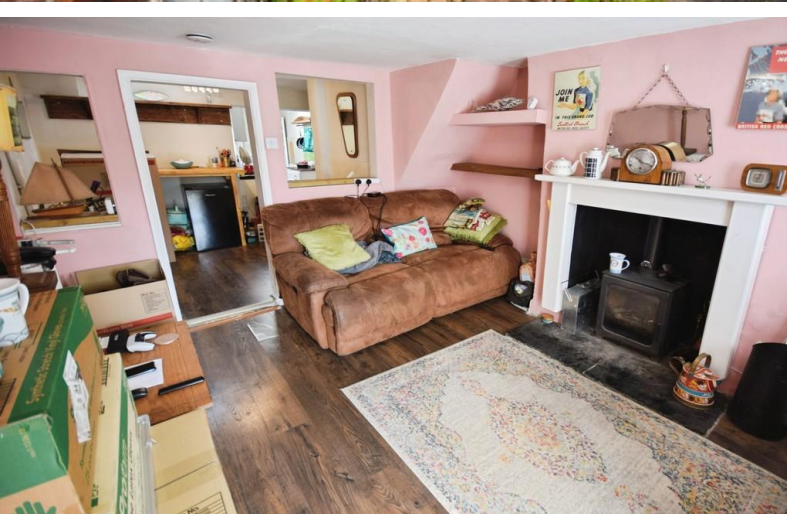


**TO LET**



**Flatts Road, Norton in the moors**

**2 Bedrooms, 1 Bathroom, Mid terraced house**

**£700 pcm**





## Flatts Road, Norton in the moors

Mid terraced house,  
2 bedroom, 1 bathroom

£700 pcm

Date available: 14th June 2025

Deposit: £807

Furnished

Council Tax band: A

- 2 Bedroom terraced cottage
- lounge
- Dining area
- kitchen
- Shower room
- Council tax band A
- Rear garden

### 2 BEDROOM TERRACED COTTAGE WITH GARDEN.

Martin and co offer for rent this character 2 bedroom cottage which is located in a popular area within a short distance from local shops and a short drive from Hanley town centre. The property which has open views to the front comprises a lounge, separate dining area, kitchen and shower room to the ground floor and 1 double and 1 single bedroom to the first floor. To the front there is off road parking and to the rear there is a large rear garden and additional parking.

Energy Efficiency Rating		
	Current	Potential
Very energy efficient - lower running costs		
(92-100) <b>A</b>		90
(81-91) <b>B</b>		
(69-80) <b>C</b>		67
(55-68) <b>D</b>		
(39-54) <b>E</b>		



---

## Martin & Co Stoke on Trent

12 Albion Street • Stoke-On-Trent • ST1 1QH

T: 01782 262880 • E: [stokeontrent@martinco.com](mailto:stokeontrent@martinco.com) <http://www.martinco.com>

# 01782 262880



**Accuracy:** References to the Tenure of a Property are based on information supplied by the Seller. The Agent has not had sight of the title documents. A Buyer is advised to obtain verification from their Solicitor. Items shown in photographs including but not limited to carpets, fixtures and fittings are not included unless specifically mentioned within the sales particulars. They may however be available by separate negotiation. Buyers must check the availability of any property and make an appointment to view before embarking on any journey to see a property. No person in the employment of the agent has any authority to make any representation about the property, and accordingly any information given is entirely without responsibility on the part of the agents, sellers(s) or lessors(s). Any property particulars are not an offer or contract, nor for part of one. **Sonic / laser Tape:** Measurements taken using a sonic / laser tape measure may be subject to a small margin of error. **All Measurements:** All Measurements are Approximate. **Services Not tested:** The Agent has not tested any apparatus, equipment, fixtures and fittings or services and so cannot verify that they are in working order or fit for the purpose. A Buyer is advised to obtain verification from their Solicitor or Surveyor.