

**TO LET**



**Rose Street, Northwood**

**3 Bedrooms, 1 Bathroom, End Terraced House**

**£750 pcm**



## Rose Street, Northwood

End Terraced House,  
3 bedroom, 1 bathroom

£750 pcm

Date available: 19th April 2025

Deposit: £865

Unfurnished

Council Tax band: A

- End Terrace House
- Two Reception rooms
- Kitchen
- Rear Garden
- Bathroom
- Council tax band A
- Close to local shops

**PROPERTY DETAILS** Martin & Co are delighted to offer this three bedroom end terraced house located in a popular area close to Hanley town centre. The property benefits from a rear garden and comprises two reception rooms, kitchen and bathroom.

**FRONT RECEPTION ROOM** Entered via UPVC door, wall mounted radiator, double glazed window to front elevation.

**REAR RECEPTION ROOM** UPVC double glazed window to rear elevation, wall mounted radiator.

**KITCHEN** Fitted kitchen comprising a range of base and wall units with worktops over, stainless steel sink and drainer with mixer tap, UPVC double glazed window to side elevation, tiled flooring, tiled splash backs, wall mounted boiler.

Energy Efficiency Rating		
	Current	Potential
Very energy efficient - lower running costs		
(92+) <b>A</b>		
(81-91) <b>B</b>		83
(69-80) <b>C</b>		
(55-68) <b>D</b>	55	
(39-54) <b>E</b>		
(21-38) <b>F</b>		



**REAR HALLWAY** Tiled flooring, part glazed hardwood door providing access to rear garden, storage cupboard.

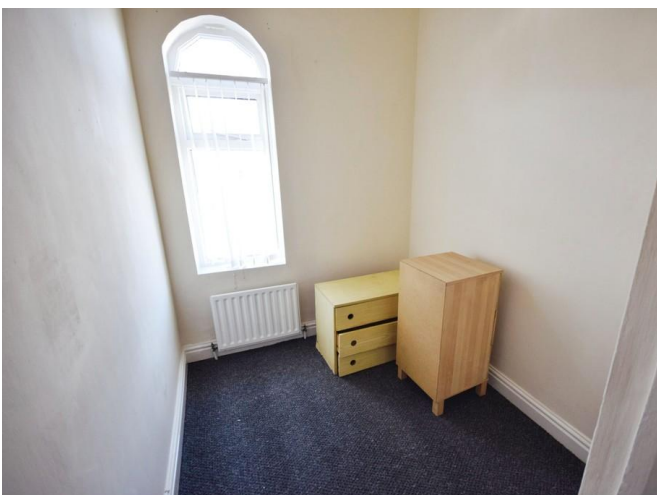
**BATHROOM** White three piece suite comprising of WC, wash hand basin and corner bath with shower off taps. Wall mounted radiator, tiled flooring, UPVC frosted double glazed window to side elevation.

**STAIRS** Carpeted flooring

**BEDROOM ONE** Double bedroom with carpeted flooring, UPVC double glazed window to rear elevation. Wall mounted radiator, storage alcove.

**BEDROOM TWO** Large single bedroom with carpeted flooring, wall mounted radiator and double glazed window to front elevation.

**BEDROOM THREE** Single bedroom with carpeted flooring, wall mounted radiator and double glazed window to front elevation.



---

## Martin & Co Stoke on Trent

12 Albion Street • Stoke-On-Trent • ST1 1QH

T: 01782 262880 • E: [stokeontrent@martinco.com](mailto:stokeontrent@martinco.com) <http://www.martinco.com>

# 01782 262880



**Accuracy:** References to the Tenure of a Property are based on information supplied by the Seller. The Agent has not had sight of the title documents. A Buyer is advised to obtain verification from their Solicitor. Items shown in photographs including but not limited to carpets, fixtures and fittings are not included unless specifically mentioned within the sales particulars. They may however be available by separate negotiation. Buyers must check the availability of any property and make an appointment to view before embarking on any journey to see a property. No person in the employment of the agent has any authority to make any representation about the property, and accordingly any information given is entirely without responsibility on the part of the agents, sellers(s) or lessors(s). Any property particulars are not an offer or contract, nor for part of one. **Sonic / laser Tape:** Measurements taken using a sonic / laser tape measure may be subject to a small margin of error. **All Measurements:** All Measurements are Approximate. **Services Not tested:** The Agent has not tested any apparatus, equipment, fixtures and fittings or services and so cannot verify that they are in working order or fit for the purpose. A Buyer is advised to obtain verification from their Solicitor or Surveyor.