

FOR SALE



Parkhead Grove, Stoke-on-Trent

2 Bedrooms, 1 Bathroom, Semi-Detached House

Offers In Excess Of £180,000



Parkhead Grove, Stoke-on-Trent

2 Bedrooms, 1 Bathroom

Offers In Excess Of £180,000

- Semi-Detached Family Home
- Two Double Bedrooms
- Beautifully Presented
- Modern Kitchen/Diner
- Ample Driveway Parking

ENTRANCE HALL Entered via a UPVC front door, stairs to first floor,

LOUNGE 14' 5" x 12' 5" (4.41m x 3.80m) Having double glazed window to the rear elevation, electric fire with feature surround, understairs storage cupboard, radiator.

KITCHEN/DINER 17' 8" x 8' 11" (5.40m x 2.73m) Spacious open plan kitchen diner fitted with a range of modern wall and base units with worksurface over which incorporates a stainless steel sink unit and drainer, integrated oven and hob, integrated dishwasher, space for fridge/freezer, double glazed window to the front elevation and UPVC French doors opening onto the rear garden, ceramic tiled floor, radiator.

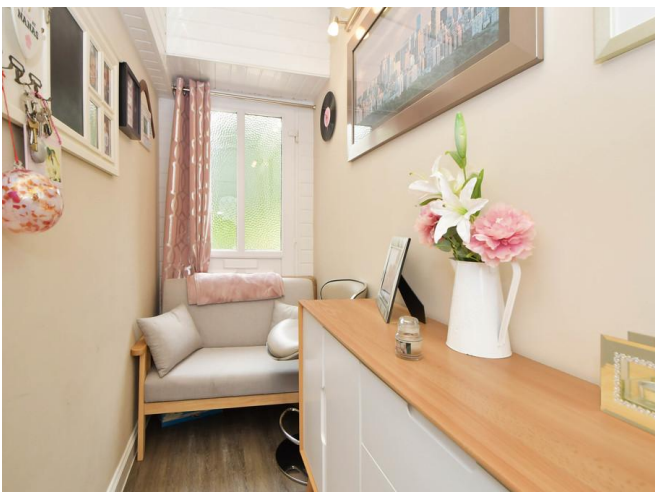
UTILITY ROOM 8' 7" x 4' 10" (2.62m x 1.49m) Having space and plumbing for washing machine and tumble dryer, housing gas combination boiler, double glazed window to the rear elevation.

WC Modern white suite comprising; low level WC, hand wash basin set in vanity unit, fully tiled walls, double glazed window to the front elevation, radiator.

BEDROOM ONE 17' 9" x 11' 4" (5.43m x 3.46m) A spacious master bedroom having dual aspect double glazed windows to the front and rear elevations, radiator.

BEDROOM TWO 11' 3" x 10' 2" (3.43m x 3.12m) Double glazed window to the rear elevation, radiator.

BATHROOM 6' 1" x 5' 5" (1.86m x 1.67m) Modern white suite comprising; low level WC, hand wash basin set in vanity unit and shower, fully tiled walls, chrome heated towel rail.





EXTERNAL The property is approached via a block paved driveway which offers off road parking for several vehicles. To the rear there is a beautifully landscaped garden with indian stone patio, decked seating area and turfed lawn all of which enjoys a good degree of privacy.





%epcGraph_c_1_210%





Ground Floor

First Floor

All measurements are approximate and for display purposes only

Martin & Co Stoke on Trent

12 Albion Street • Stoke-On-Trent • ST1 1QH
T: 01782 262880 • E: stokeontrent@martinco.com

01782 262880

<http://www.martinco.com>



Accuracy: References to the Tenure of a Property are based on information supplied by the Seller. The Agent has not had sight of the title documents. A Buyer is advised to obtain verification from their Solicitor. Items shown in photographs including but not limited to carpets, fixtures and fittings are not included unless specifically mentioned within the sales particulars. They may however be available by separate negotiation. Buyers must check the availability of any property and make an appointment to view before embarking on any journey to see a property. No person in the employment of the agent has any authority to make any representation about the property, and accordingly any information given is entirely without responsibility on the part of the agents, sellers(s) or lessors(s). Any property particulars are not an offer or contract, nor for part of one. **Sonic / Laser Tape:** Measurements taken using a sonic / Laser tape measure may be subject to a small margin of error. **All Measurements:** All Measurements are Approximate. **Services Not tested:** The Agent has not tested any apparatus, equipment, fixtures and fittings or services and so cannot verify that they are in working order or fit for the purpose. A Buyer is advised to obtain verification from their Solicitor or Surveyor.