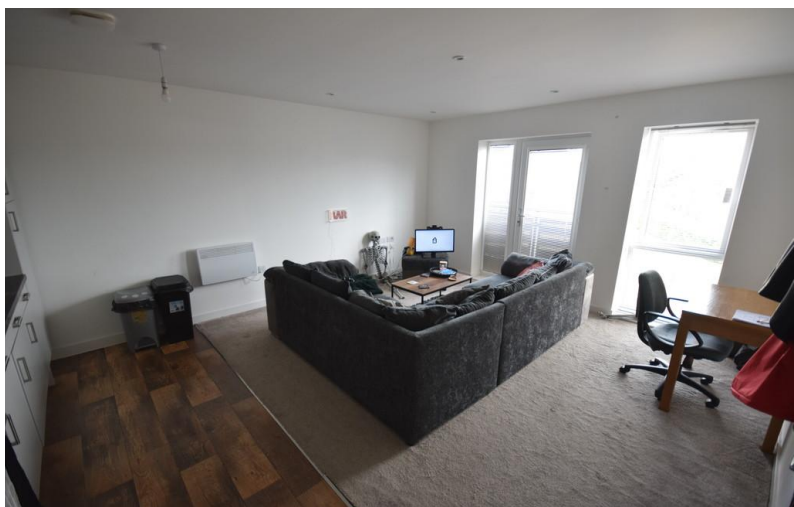


TO LET



Eastwood Road, Hanley

2 Bedrooms, 1 Bathroom, Apartment

£795 pcm



Eastwood Road, Hanley

Apartment,
2 bedroom, 1 bathroom

£795 pcm

Date available: 24th July 2024

Deposit: £917

Unfurnished

Council Tax band: B

- 2 Double bedroom flat
- Open plan lounge and kitchen
- Bathroom
- Lift to all floors
- Allocated secure parking
- Walking distance from Hanley shops
- Council tax band B

Energy Efficiency Rating

	Current	Potential
<i>Very energy efficient - lower running costs</i>		
(92-100) A		
(81-91) B	81	81
(69-80) C		
(55-68) D		
(39-54) E		



Martin & Co Stoke on Trent

12 Albion Street • Stoke-On-Trent • ST1 1QH

T: 01782 262880 • E: stokeontrent@martinco.com <http://www.martinco.com>

01782 262880



Accuracy: References to the Tenure of a Property are based on information supplied by the Seller. The Agent has not had sight of the title documents. A Buyer is advised to obtain verification from their Solicitor. Items shown in photographs including but not limited to carpets, fixtures and fittings are not included unless specifically mentioned within the sales particulars. They may however be available by separate negotiation. Buyers must check the availability of any property and make an appointment to view before embarking on any journey to see a property. No person in the employment of the agent has any authority to make any representation about the property, and accordingly any information given is entirely without responsibility on the part of the agents, sellers(s) or lessors(s). Any property particulars are not an offer or contract, nor form part of one. **Sonic / laser Tape:** Measurements taken using a sonic / laser tape measure may be subject to a small margin of error. **All Measurements:** All Measurements are Approximate. **Services Not tested:** The Agent has not tested any apparatus, equipment, fixtures and fittings or services and so cannot verify that they are in working order or fit for the purpose. A Buyer is advised to obtain verification from their Solicitor or Surveyor.