

FOR SALE



Arbour Close, Madeley, Crewe

3 Bedrooms, 1 Bathroom, Detached House

Offers In Region Of £290,000


MARTIN&CO



Arbour Close, Madeley, Crewe

3 Bedrooms, 1 Bathroom

Offers In Region Of £290,000

- Detached Family Home
- Sought After Village of Madeley
- Three Bedrooms
- Extended Kitchen/Diner
- Garden Room



ENTRANCE HALL Storage cupboard, stairs to first floor.

WC Low level WC, hand wash basin set in vanity unit, ceramic tiled floor, double glazed window to the front elevation, radiator.

LOUNGE 16' 0" x 11' 9" (4.90m x 3.59m) Electric fire, double glazed window to the front elevation, radiator.

KITCHEN/DINER 19' 6" x 12' 4" (5.96m x 3.76m) Fitted with a range of wall and base units with worksurface over which incorporates a stainless steel sink unit and drainer, integrated oven and hob with extractor, integrated dishwasher, door through to utility, radiator.

GARDEN ROOM 16' 3" x 11' 10" (4.96m x 3.61m) A fantastic addition having bi-fold doors opening onto the rear garden and double glazed windows to the side elevation, built in storage cupboards, pass through to kitchen, radiator.

UTILITY ROOM 15' 1" x 7' 4" (4.62m x 2.24m) Fitted with wall and base units with worksurface over which incorporating a stainless steel sink unit and drainer, space and plumbing for washing machine and tumble dryer quarry tiled floor, door giving access to the side, radiator.

LANDING Airing cupboard, double glazed window to the side elevation.

BEDROOM ONE 12' 0" x 10' 4" (3.67m x 3.15m) Having fitted wardrobes, double glazed window to the rear elevation, radiator.

BEDROOM TWO 11' 5" x 9' 11" (3.48m x 3.04m) Double glazed window to the front elevation, built in storage cupboard, radiator.

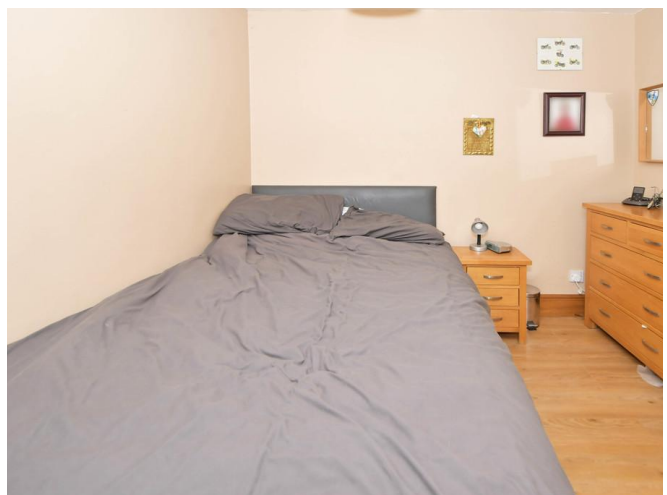


BEDROOM THREE 9' 4" x 8' 4" (2.86m x 2.55m)
 Double glazed window to the side elevation, built in storage cupboard, radiator.

BATHROOM 7' 1" x 6' 11" (2.17m x 2.11m) Modern white suite comprising; low level WC and bath with shower over, fully tiled walls, double glazed window to the rear elevation, radiator.

GARAGE 18' 11" x 8' 2" (5.79m x 2.50m) Attached single garage with up and over door, power and lighting.

GARAGE The property is approached via a block paved driveway providing off road parking with a lawned garden adjacent. To the rear of the property there is a delightful rear garden with enjoys a good degree of privacy and is mainly laid to lawn with both a paved patio and decked seating area.



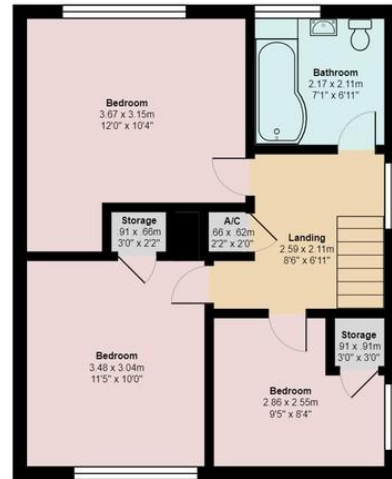


%epcGraph_c_1_210%





Ground Floor



First Floor

All measurements are approximate and for display purposes only

Martin & Co Newcastle under Lyme
 12 Albion Street • Stoke-On-Trent • ST1 1QH
 T: 01782 453 001 • E: newcastleunderlyme@martinco.com

01782 453 001
<http://www.martinco.com>



Accuracy: References to the Tenure of a Property are based on information supplied by the Seller. The Agent has not had sight of the title documents. A Buyer is advised to obtain verification from their Solicitor. Items shown in photographs including but not limited to carpets, fixtures and fittings are not included unless specifically mentioned within the sales particulars. They may however be available by separate negotiation. Buyers must check the availability of any property and make an appointment to view before embarking on any journey to see a property. No person in the employment of the agent has any authority to make any representation about the property, and accordingly any information given is entirely without responsibility on the part of the agents, sellers(s) or lessors(s). Any property particulars are not an offer or contract, nor for part of one. **Sonic / Laser Tape:** Measurements taken using a sonic / Laser tape measure may be subject to a small margin of error. **All Measurements:** All Measurements are Approximate. **Services Not tested:** The Agent has not tested any apparatus, equipment, fixtures and fittings or services and so cannot verify that they are in working order or fit for the purpose. A Buyer is advised to obtain verification from their Solicitor or Surveyor.

