

**FOR SALE**



**Liverpool Road, Cross Heath, Newcastle**

**2 Bedrooms, 1 Bathroom, Mid Terraced House**

**Offers In Excess Of £150,000**



## Liverpool Road, Cross Heath, Newcastle

2 Bedrooms, 1 Bathroom

**Offers In Excess Of £150,000**

- Mid Terraced House
- Three Reception Rooms
- Two Bedrooms
- Gas Central Heating
- No Upward Chain



HALL 13' 11" x 3' 3" (4.24m x 0.99m) Wood door to the front elevation, central heating radiator, dado rail

INNER HALL 13' 4" x 3' 3" (4.06m x 0.99m) Carpet to floor

LOUNGE 12' 4" x 11' 10" (3.76m x 3.61m) Upvc double glazed bay window, picture rail, central heating radiator, chimney breast, carpet to floor

SITTING ROOM 13' 4" x 8' 2" (4.06m x 2.49m) Upvc double glazed window to the rear elevation, chimney breast, central heating radiator, carpet to floor

DINING ROOM 14' 9" x 8' 9" (4.5m x 2.67m) Upvc double glazed windows x 2 to the side elevation, central heating radiator, under stairs storage, carpet to floor

KITCHEN 9' 9" x 8' 9" (2.97m x 2.67m) Upvc double glazed window to the side elevation, Upvc double glazed frosted glass panelled door to the side, wall and base units with worktops over, stainless steel single sink, built in oven and hob, extractor fan, fridge freezer, space and plumbing for washing machine, central heating boiler, part tiled walls, tiled flooring

STAIRS AND LANDING Built in airing cupboard, carpet to floor

BATHROOM 8' 9" x 7' 0" (2.67m x 2.13m) Upvc double glazed frosted window, 3 piece bathroom suite in white with shower over, central heating radiator, part tiled walls, vinyl flooring

STUDY 7' 5" x 5' 7" (2.26m x 1.7m)

BEDROOM 13' 4" x 8' 8" (4.06m x 2.64m) Upvc double glazed window to the rear elevation, chimney breast, central heating radiator, carpet to floor



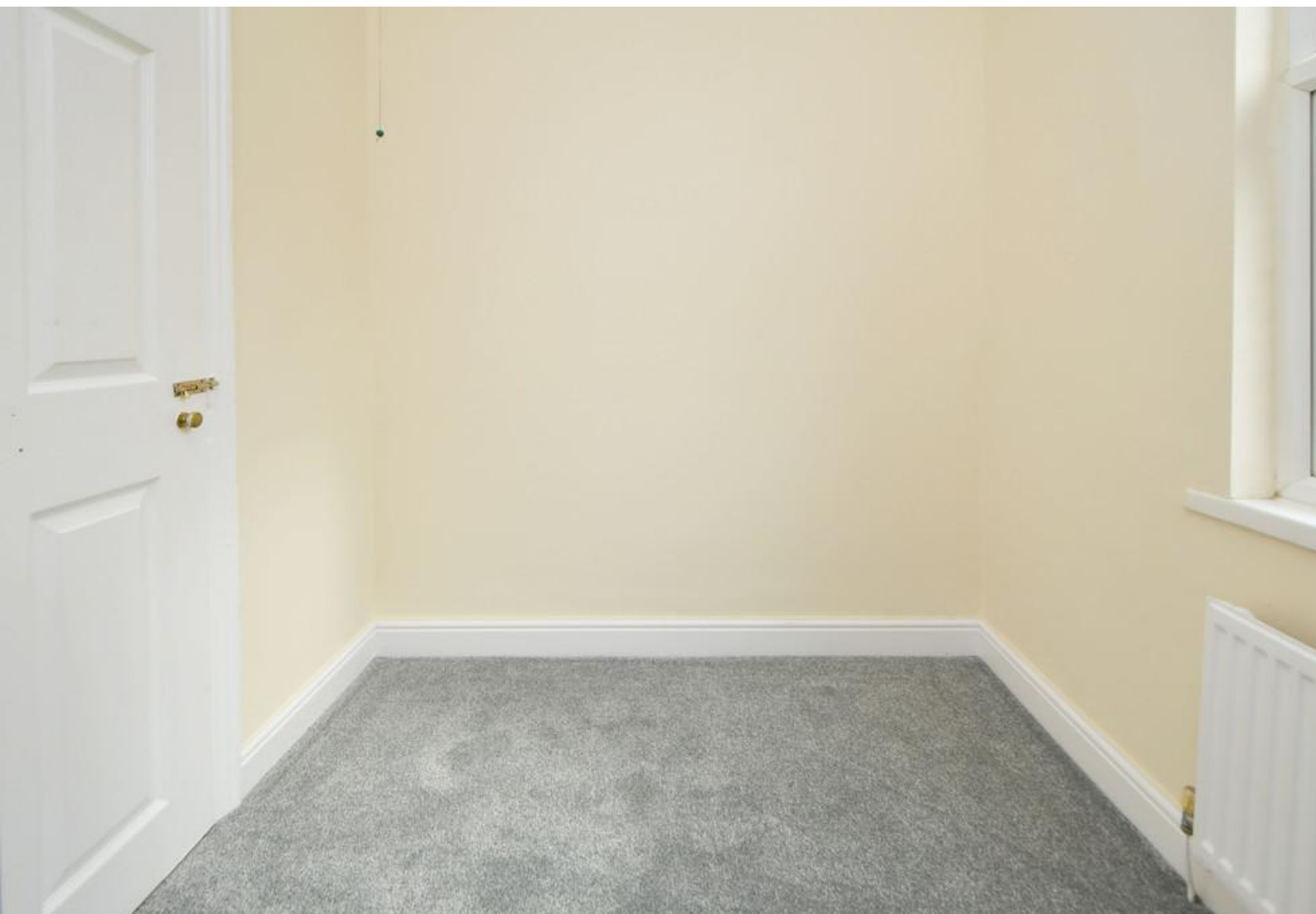
BEDROOM 15' 5" x 12' 4" (4.7m x 3.76m) Upvc double glazed windows x 2 to the front elevation, chimney breast, central heating radiator x 2, coving, carpet to floor

REAR YARD Gated access, paved, enclosed by wall





Energy Efficiency Rating		
	Current	Potential
Very energy efficient - lower running costs		
(92-100) <b>A</b>		
(81-91) <b>B</b>		
(69-80) <b>C</b>		82
(55-68) <b>D</b>	64	
(39-54) <b>E</b>		
(21-38) <b>F</b>		
(1-20) <b>G</b>		
Not energy efficient - higher running costs		
England, Scotland & Wales		EU Directive 2002/91/EC





All measurements are approximate and for display purposes only

**Martin & Co Newcastle under Lyme**  
 12 Albion Street • Stoke-On-Trent • ST1 1QH  
 T: 01782 453 001 • E: newcastleunderlyme@martinco.com

**01782 453 001**  
<http://www.martinco.com>



**Accuracy:** References to the Tenure of a Property are based on information supplied by the Seller. The Agent has not had sight of the title documents. A Buyer is advised to obtain verification from their Solicitor. Items shown in photographs including but not limited to carpets, fixtures and fittings are not included unless specifically mentioned within the sales particulars. They may however be available by separate negotiation. Buyers must check the availability of any property and make an appointment to view before embarking on any journey to see a property. No person in the employment of the agent has any authority to make any representation about the property, and accordingly any information given is entirely without responsibility on the part of the agents, sellers(s) or lessors(s). Any property particulars are not an offer or contract, nor for part of one. **Sonic / Laser Tape:** Measurements taken using a sonic / laser tape measure may be subject to a small margin of error. **All Measurements:** All Measurements are Approximate. **Services Not tested:** The Agent has not tested any apparatus, equipment, fixtures and fittings or services and so cannot verify that they are in working order or fit for the purpose. A Buyer is advised to obtain verification from their Solicitor or Surveyor.