

**FOR SALE**



**London Road, Chesterton, Newcastle**

**3 Bedrooms, 3 Bathroom, Apartment**

**Asking Price Of £229,950**



## London Road, Chesterton, Newcastle

3 Bedrooms, 3 Bathroom

Asking Price Of £229,950

- Pre Let Investment Opportunity
- Terraced House
- Three self contained flats
- Upvc Double Glazing
- Gas Central Heating



HALL Upvc double glazed door to the front elevation, Minton floor, central heating radiator, stairs to flat 3, carpet to stairs, access to cellar

Landing - Upvc double glazed window to the front elevation

### FLAT ONE

LOUNGE/KITCHEN AREA Upvc double glazed door to the front elevation, Upvc double glazed window, range of wall and base units with worktops over, space and plumbing for washing machine and tumble dryer, built in oven and hob, extractor hood, part tiled walls TV aerial point, wood laminate flooring

STAIRS Carpet to floor

BEDROOM Upvc double glazed windows to the front and side elevations, wood laminate flooring

SHOWER ROOM 3 piece suite in white including shower cubicle, heated towel rail, extractor fan, wood laminate flooring

### FLAT TWO

LOUNGE/KITCHEN AREA Upvc double glazed window to the front elevation, range of wall and base units with worktops over, single stainless steel sink, space for fridge, space for washing machine, built in oven and hob, central heating radiator, TV aerial point, wood laminate flooring

BEDROOM Upvc double glazed window to the side elevation, Upvc double glazed frosted panelled door to the side, central heating radiator, walk in wardrobe unit, wood laminate flooring



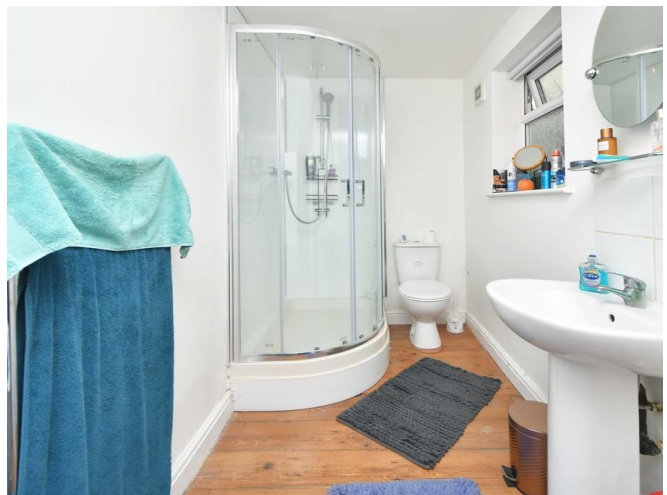
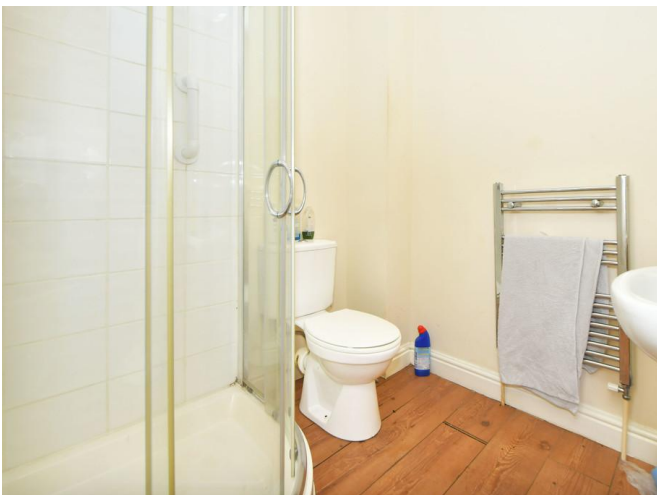
SHOWER ROOM Upvc double glazed frosted window to the side elevation, 3 piece in white including shower cubicle, heated towel rail, wood laminate flooring

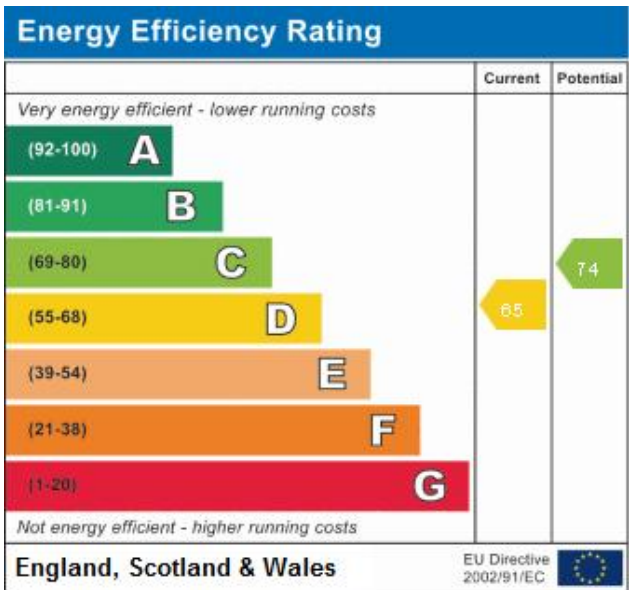
#### FLAT THREE

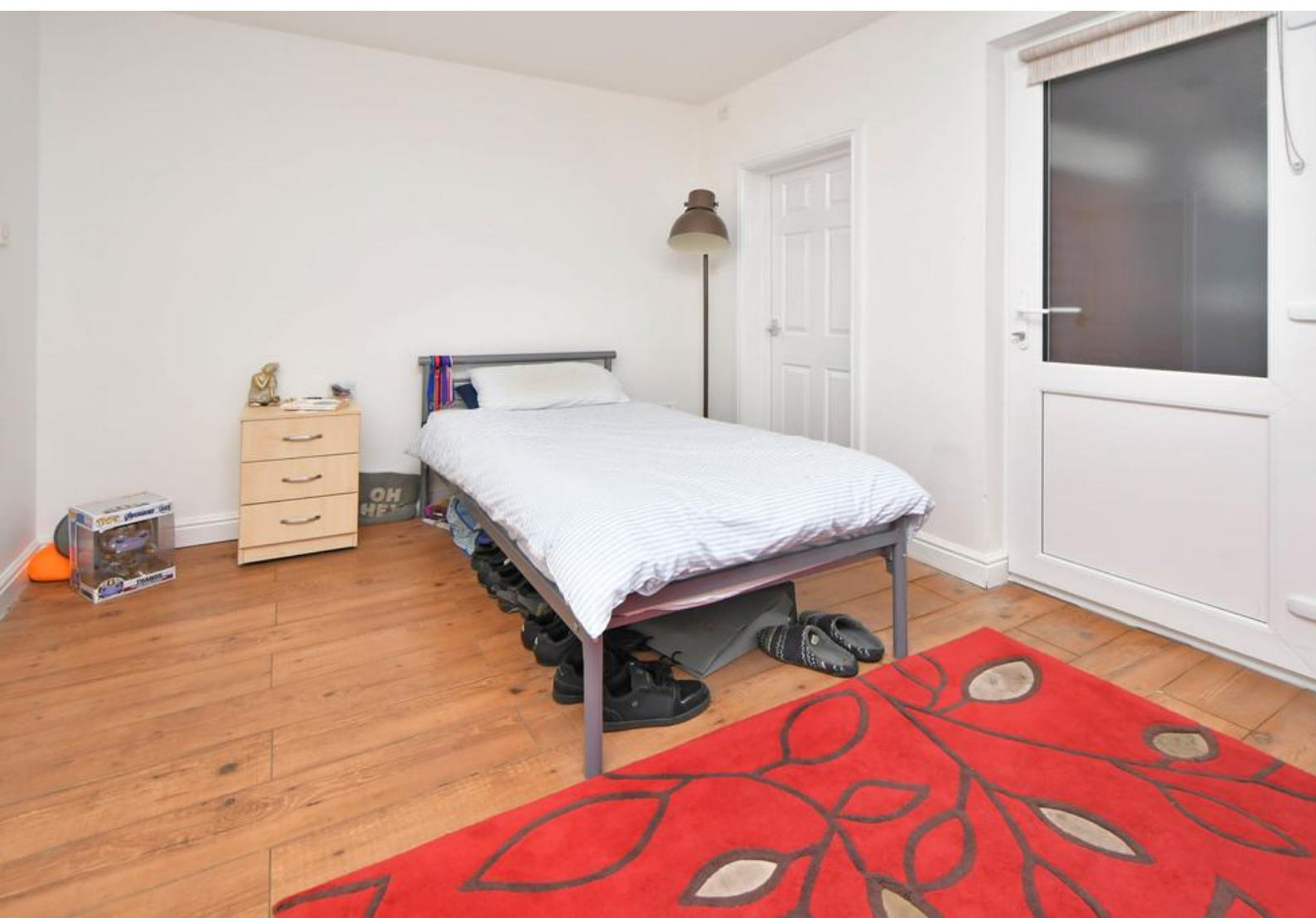
LOUNGE/KITCHEN AREA Upvc double glazed windows to the side and front elevations, range of wall and base units with worktops over, space and plumbing for washing machine wood laminate flooring

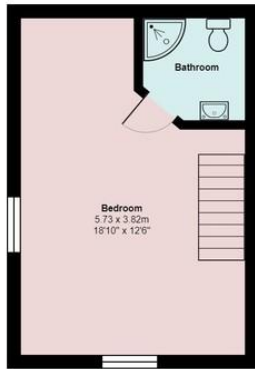
BEDROOM Upvc double glazed window to the side elevation, walk in wardrobe, wood laminate flooring

SHOWER ROOM 3 piece suite in white including shower cubicle, heated towel rail, extractor fan, wood laminate flooring





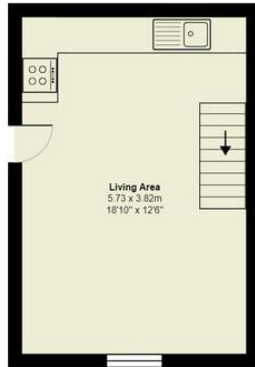




Flat 1 - First Floor



Flat 3 - First Floor



Flat 1 - Ground Floor



Flat 2 - Ground Floor

## Martin & Co Newcastle under Lyme

12 Albion Street • Stoke-On-Trent • ST1 1QH  
T: 01782 453 001 • E: newcastleunderlyme@martinco.com

01782 453 001

<http://www.martinco.com>



**Accuracy:** References to the Tenure of a Property are based on information supplied by the Seller. The Agent has not had sight of the title documents. A Buyer is advised to obtain verification from their Solicitor. Items shown in photographs including but not limited to carpets, fixtures and fittings are not included unless specifically mentioned within the sales particulars. They may however be available by separate negotiation. Buyers must check the availability of any property and make an appointment to view before embarking on any journey to see a property. No person in the employment of the agent has any authority to make any representation about the property, and accordingly any information given is entirely without responsibility on the part of the agents, sellers(s) or lessors(s). Any property particulars are not an offer or contract, nor for part of one. **Sonic / Laser Tape:** Measurements taken using a sonic / Laser tape measure may be subject to a small margin of error. **All Measurements:** All Measurements are Approximate. **Services Not tested:** The Agent has not tested any apparatus, equipment, fixtures and fittings or services and so cannot verify that they are in working order or fit for the purpose. A Buyer is advised to obtain verification from their Solicitor or Surveyor.