



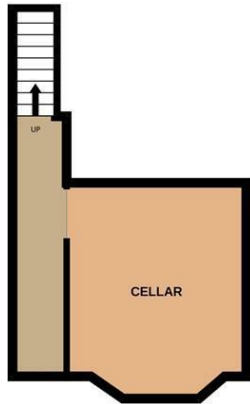
**5 Bed
House - Terraced
located in**

£3,250 Per Month

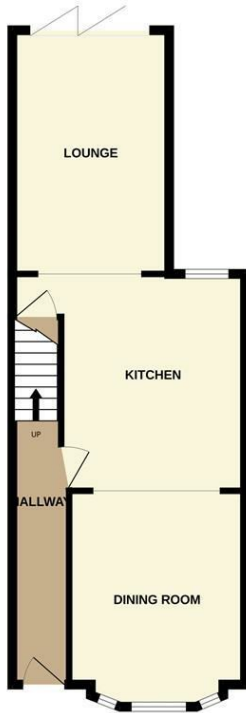


STANTON
PROPERTIES

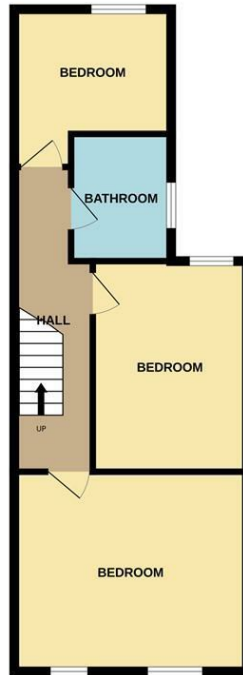
BASEMENT
205 sq.ft. (19.0 sq.m.) approx.



GROUND FLOOR
500 sq.ft. (46.5 sq.m.) approx.



1ST FLOOR
495 sq.ft. (46.0 sq.m.) approx.

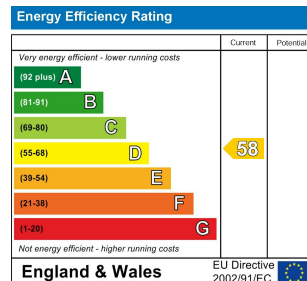


2ND FLOOR
257 sq.ft. (23.9 sq.m.) approx.



TOTAL FLOOR AREA: 1458 sq.ft. (135.4 sq.m.) approx.

Whilst every attempt has been made to ensure the accuracy of the floorplan contained here, measurements of doors, windows, rooms and any other items are approximate and no responsibility is taken for any error, omission or mis-statement. This plan is for illustrative purposes only and should be used as such by any prospective purchaser. The services, systems and appliances shown have not been tested and no guarantee as to their operability or efficiency can be given.
Made with Metropix ©2024



DIRECTIONS

CONTACT

31 Barlow Moor Road
Didsbury
Manchester
M20 6TW

E: office@stantonproperties.co.uk
T: 01614345307

