



## 4 Newmans Court

, Farnham, GU9 0SJ

A well presented 4 bedroom detached family house situated on an established no through road within walking distance of Farnham Park. The house offers well planned accommodation with 3 reception rooms, a kitchen/breakfast room and a utility room. On the first floor 3 double and a single bedroom, en suite shower room and family bathroom. Outside to the front there is driveway parking, a double garage and an enclosed westerly facing rear garden.

**Price Guide £780,000**

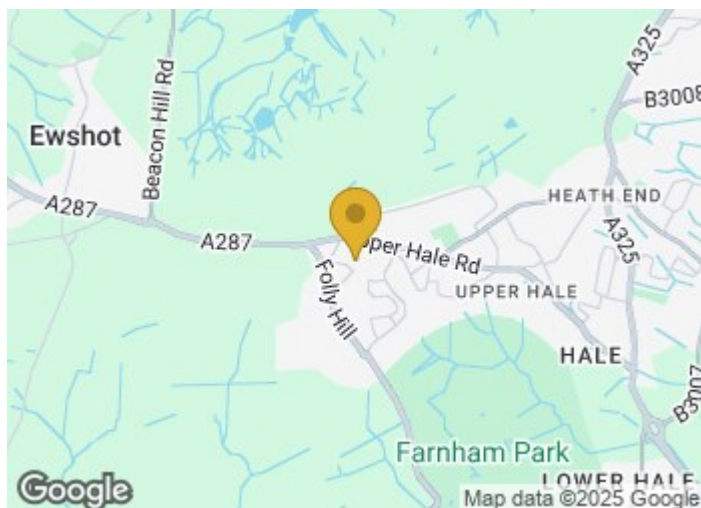


# 4 Newmans Court

, Farnham, GU9 0SJ

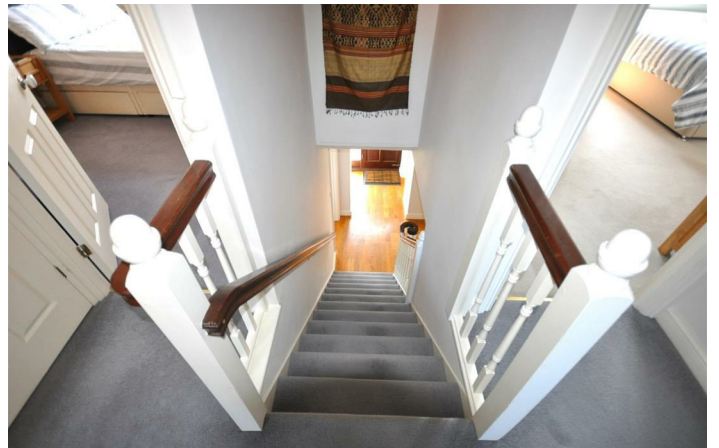


- Entrance hall with cloakroom
- Kitchen/breakfast room
- 4 bedrooms en suite shower to Bedroom 1
- Front and rear garden
- Sitting room with doors to patio and rear garden
- Study
- Family bathroom
- Dining room
- Utility room
- Double garage and driveway parking



Directions

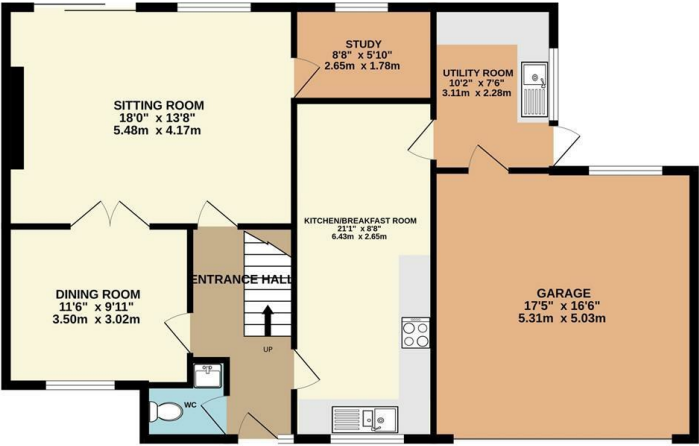




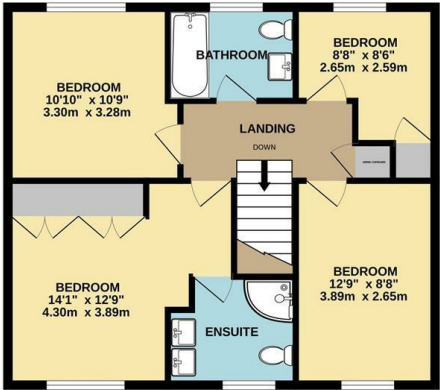


Floor Plan

GROUND FLOOR  
1034 sq.ft. (96.1 sq.m.) approx.



1ST FLOOR  
630 sq.ft. (58.5 sq.m.) approx.



TOTAL FLOOR AREA : 1663 sq.ft. (154.5 sq.m.) approx.  
Whilst every attempt has been made to ensure the accuracy of the floorplan contained here, measurements of doors, windows, rooms and any other items are approximate and no responsibility is taken for any error, omission or mis-statement. This plan is for illustrative purposes only and should be used as such by any prospective purchaser. The services, systems and appliances shown have not been tested and no guarantee as to their operability or efficiency can be given.  
Made with Metropix ©2024



These particulars, whilst believed to be accurate are set out as a general outline only for guidance and do not constitute any part of an offer or contract. Intending purchasers should not rely on them as statements of representation of fact, but must satisfy themselves by inspection or otherwise as to their accuracy. No person in this firms employment has the authority to make or give any representation or warranty in respect of the property.

