

## 8 Dollis Drive , Farnham, GU9 9QD

A spacious 3/4 bedroom end of terrace town house set over three floors offering flexible accommodation. There is an enclosed rear garden and off road parking for two vehicles.

**Price Guide £400,000**

# 8 Dollis Drive

, Farnham, GU9 9QD



- Close to Farnham town
- Potential for a ground floor annexe
- Kitchen
- Off road parking for two vehicles
- 3/4 bedrooms
- 2/3 reception rooms
- Cul-de-sac location
- Flexible room use
- Bathroom and shower room
- Rear garden



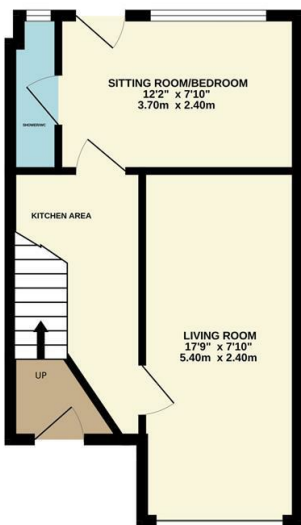
[Directions](#)





# Floor Plan

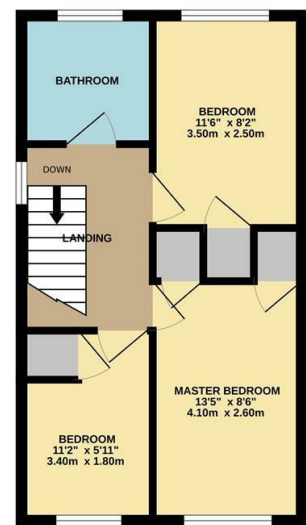
GROUND FLOOR  
341 sq.ft. (31.7 sq.m.) approx.



1ST FLOOR  
353 sq.ft. (32.8 sq.m.) approx.



2ND FLOOR  
353 sq.ft. (32.8 sq.m.) approx.



TOTAL FLOOR AREA : 1047 sq.ft. (97.3 sq.m.) approx.

Whilst every attempt has been made to ensure the accuracy of the floorplan contained here, measurements of doors, windows, rooms and any other items are approximate and no responsibility is taken for any error, omission or mis-statement. This plan is for illustrative purposes only and should be used as such by any prospective purchaser. The services, systems and appliances shown have not been tested and no guarantee as to their operability or efficiency can be given.  
Made with Metropix ©2024



These particulars, whilst believed to be accurate are set out as a general outline only for guidance and do not constitute any part of an offer or contract. Intending purchasers should not rely on them as statements of representation of fact, but must satisfy themselves by inspection or otherwise as to their accuracy. No person in this firm's employment has the authority to make or give any representation or warranty in respect of the property.

