



6 Broadlands Close

Bentley, Farnham, GU10 5LE

Situated on a cul de sac in the popular village of Bentley, a 3 bedroom semi detached house with driveway parking and a south westerly facing rear garden. No onward chain.

Price Guide £425,000

6 Broadlands Close

Bentley, Farnham, GU10 5LE



- Entrance hall
- 3 bedrooms
- Level enclosed south/westerly facing rear garden
- No onward chain
- Sitting/dining room
- En suite shower to Bedroom 1
- Driveway parking
- Kitchen
- Family bathroom
- Cul de sac and village location

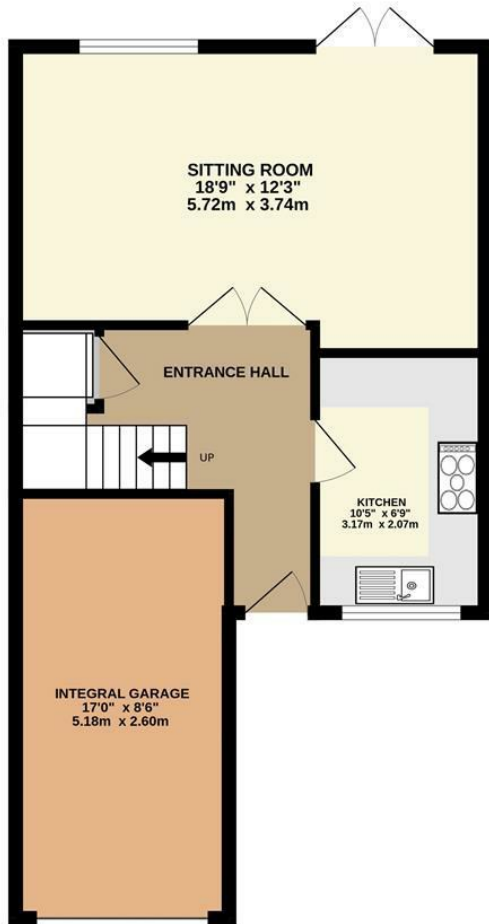


[Directions](#)

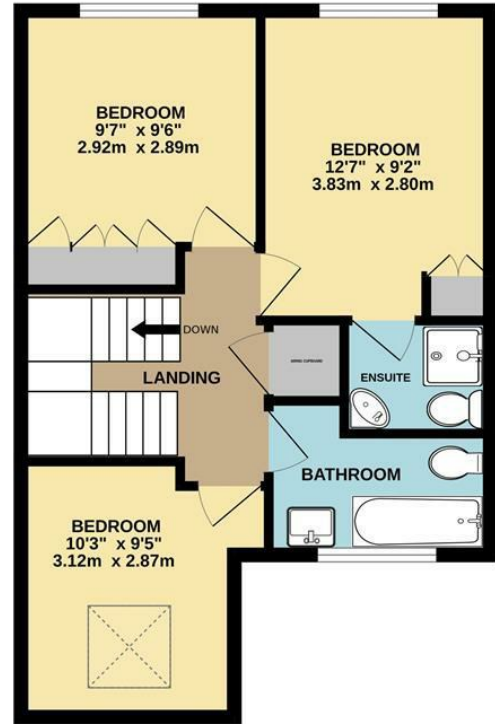


Floor Plan

GROUND FLOOR
530 sq.ft. (49.2 sq.m.) approx.



1ST FLOOR
464 sq.ft. (43.1 sq.m.) approx.



TOTAL FLOOR AREA : 994 sq.ft. (92.4 sq.m.) approx.

Whilst every attempt has been made to ensure the accuracy of the floorplan contained here, measurements of doors, windows, rooms and any other items are approximate and no responsibility is taken for any error, omission or mis-statement. This plan is for illustrative purposes only and should be used as such by any prospective purchaser. The services, systems and appliances shown have not been tested and no guarantee as to their operability or efficiency can be given.
Made with Metropix ©2024

These particulars, whilst believed to be accurate are set out as a general outline only for guidance and do not constitute any part of an offer or contract. Intending purchasers should not rely on them as statements of representation of fact, but must satisfy themselves by inspection or otherwise as to their accuracy. No person in this firm's employment has the authority to make or give any representation or warranty in respect of the property.

