

## 21 Middle Bourne Lane

Lower Bourne, Farnham, GU10 3NE

A modern well laid out three bedroom two bathroom semi-detached bungalow which has undergone total modernisation to create spacious open plan living. Situated on a popular quiet South Farnham lane the property benefits from garden to the front with ample level parking and a recently enhanced courtyard and storage area to the rear.

**Price Guide £565,000**

# 21 Middle Bourne Lane

Lower Bourne, Farnham, GU10 3NE



- Entrance hall
- Open plan living
- Sitting room
- Driveway parking
- Three bedrooms
- Kitchen/breakfast bar
- Family bathroom
- Master en-suite
- Dining area
- Front garden/rear courtyard



[Directions](#)

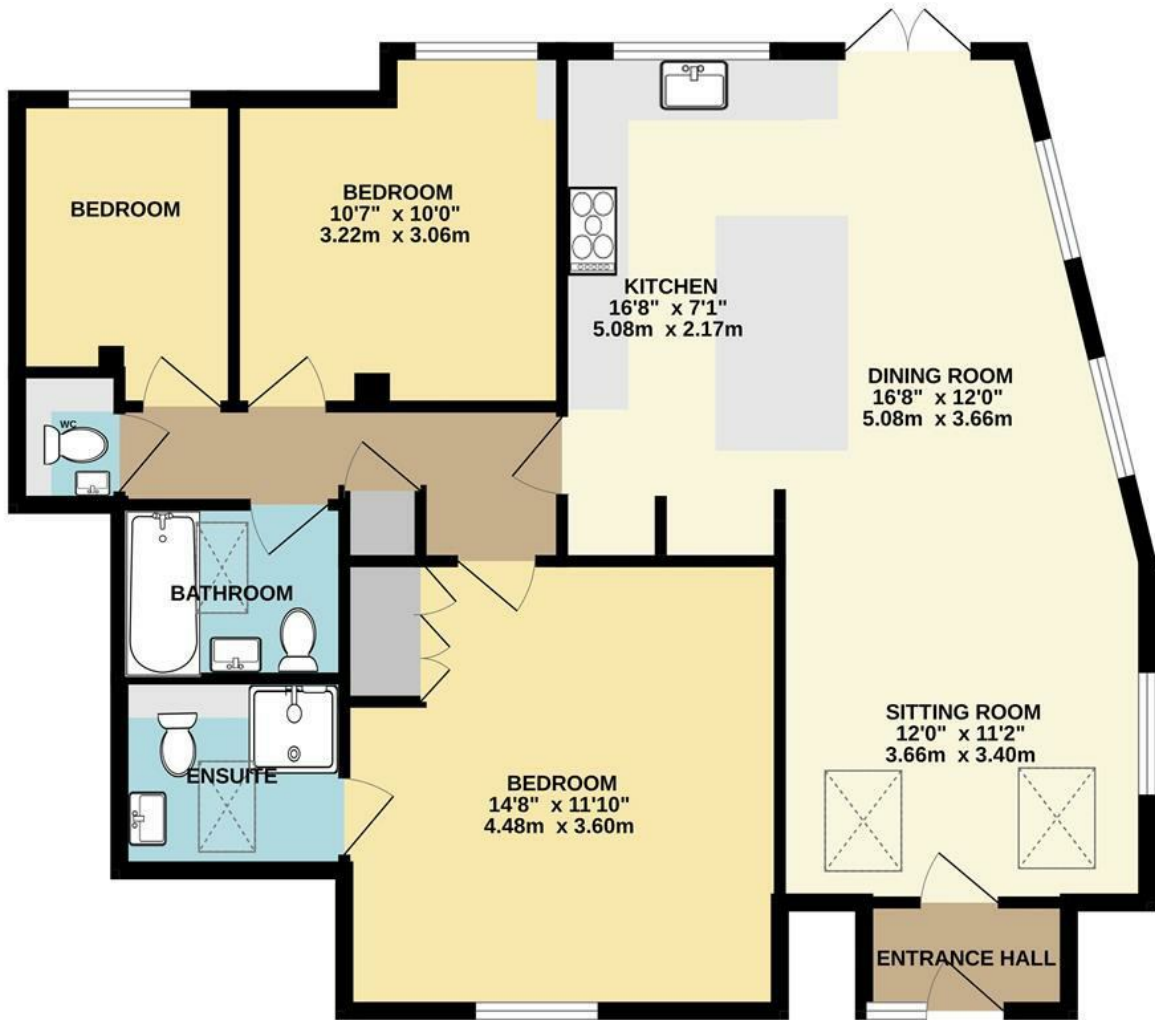






# Floor Plan

GROUND FLOOR  
994 sq.ft. (92.4 sq.m.) approx.



TOTAL FLOOR AREA : 994 sq.ft. (92.4 sq.m.) approx.  
Whilst every attempt has been made to ensure the accuracy of the floorplan contained here, measurements of doors, windows, rooms and any other items are approximate and no responsibility is taken for any error, omission or mis-statement. This plan is for illustrative purposes only and should be used as such by any prospective purchaser. The services, systems and appliances shown have not been tested and no guarantee as to their operability or efficiency can be given.  
Made with Metropix ©2023



These particulars, whilst believed to be accurate are set out as a general outline only for guidance and do not constitute any part of an offer or contract. Intending purchasers should not rely on them as statements of representation of fact, but must satisfy themselves by inspection or otherwise as to their accuracy. No person in this firm's employment has the authority to make or give any representation or warranty in respect of the property.

