



10 Broadwell Road , Farnham, GU10 4QH

A spacious 4 double bedroom detached family house with 3 reception rooms situated in a quiet residential road close to sought after schools. The property has a level garden, driveway parking, single integral garage and a spacious entrance hall and landing.

Price Guide £850,000

10 Broadwell Road

, Farnham, GU10 4QH



- Spacious entrance hall and landing
- Kitchen/breakfast room
- Bathroom
- Close to local schools
- Sitting room
- Conservatory
- Garage and driveway parking
- Dining room
- 4 double bedrooms
- Garden



Directions

From Farnham town proceed out along West Street. At the Coxbridge roundabout take the second exit onto Wrecclesham road and at the next small roundabout take the first exit onto School Hill. Carry on up the road and Broadwell Road is on the right hand side.

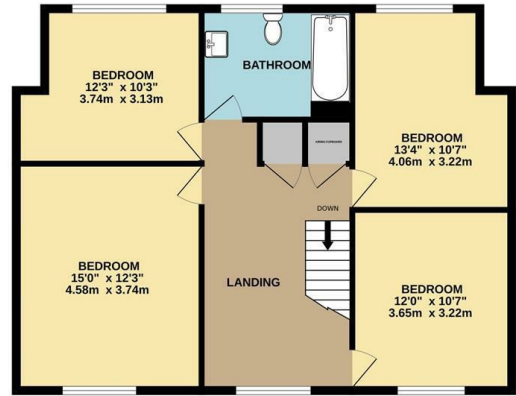


Floor Plan

GROUND FLOOR
1088 sq.ft. (101.1 sq.m.) approx.



1ST FLOOR
806 sq.ft. (74.9 sq.m.) approx.



TOTAL FLOOR AREA: 1894 sq.ft. (175.9 sq.m.) approx.

Whilst every attempt has been made to ensure the accuracy of the floorplan contained here, measurements of doors, windows, rooms and any other items are approximate and no responsibility is taken for any error, omission or mis-statement. This plan is for illustrative purposes only and should be used as such by any prospective purchaser. The services, systems and appliances shown have not been tested and no guarantee as to their operability or efficiency can be given.
Made with Metropix ©2024



These particulars, whilst believed to be accurate are set out as a general outline only for guidance and do not constitute any part of an offer or contract. Intending purchasers should not rely on them as statements of representation of fact, but must satisfy themselves by inspection or otherwise as to their accuracy. No person in this firm's employment has the authority to make or give any representation or warranty in respect of the property.

