



Flat 3 Waverley Heights

58 Waverley Lane, Farnham, GU9 8BN

A well presented 2 bedroom, 2 bathroom ground floor apartment overlooking the communal gardens with a private patio and parking in a gated development situated to the south of Farnham town.

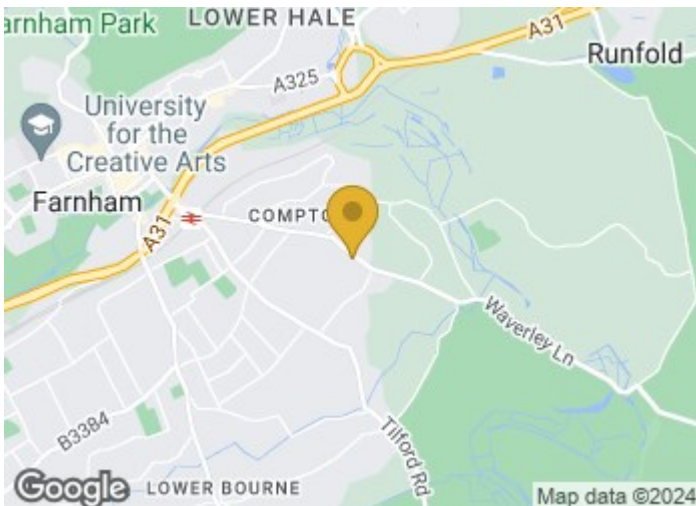
Price Guide £450,000

Flat 3 Waverley Heights

58 Waverley Lane, Farnham, GU9 8BN



- Gated entrance
- Entrance hall with storage cupboard
- Private patio and communal grounds
- No onward chain
- 2 double bedrooms with fitted wardrobe cupboards
- Sitting room with door to patio and gardens
- Under floor heating
- Kitchen/dining room with double doors to the patio
- En suite shower room and seperate shower room
- Numbered parking space and vistors parking

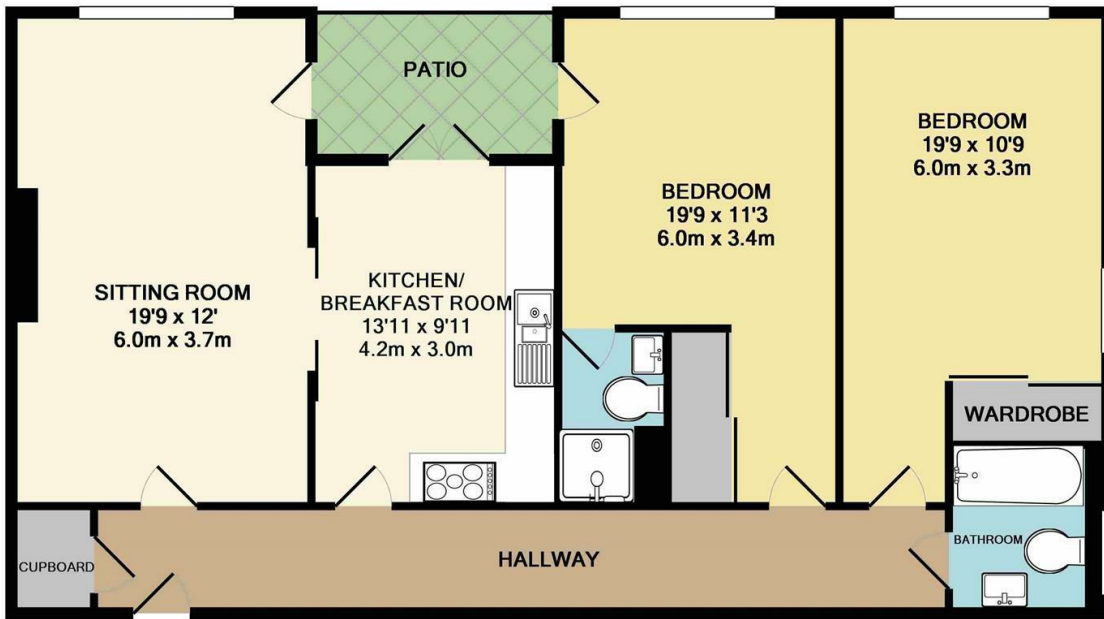


[Directions](#)





Floor Plan



TOTAL APPROX. FLOOR AREA 985 SQ.FT. (91.5 SQ.M.)

Whilst every attempt has been made to ensure the accuracy of the floor plan contained here, measurements of doors, windows, rooms and any other items are approximate and no responsibility is taken for any error, omission, or mis-statement. This plan is for illustrative purposes only and should be used as such by any prospective purchaser. The services, systems and appliances shown have not been tested and no guarantee as to their operability or efficiency can be given
 Made with Metropix ©2015

These particulars, whilst believed to be accurate are set out as a general outline only for guidance and do not constitute any part of an offer or contract. Intending purchasers should not rely on them as statements of representation of fact, but must satisfy themselves by inspection or otherwise as to their accuracy. No person in this firm's employment has the authority to make or give any representation or warranty in respect of the property.

