



46A The Borough , Farnham, GU9 7NW

A well presented two double bedroom duplex apartment in the heart of the town centre with good size private outside space and roof top views. The property which has a lengthy lease, is accessed via a private front door and stairs to an entrance hallway.

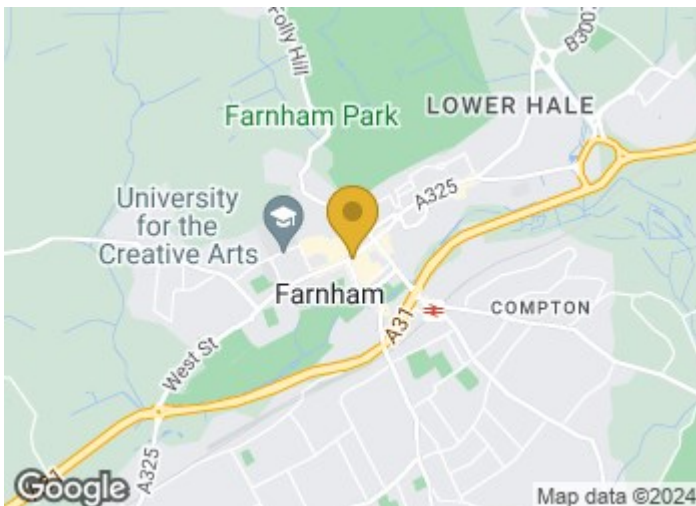
Price Guide £350,000

46A The Borough

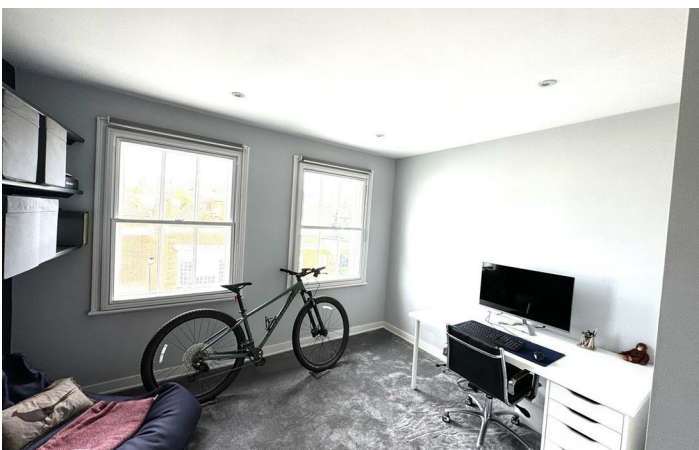
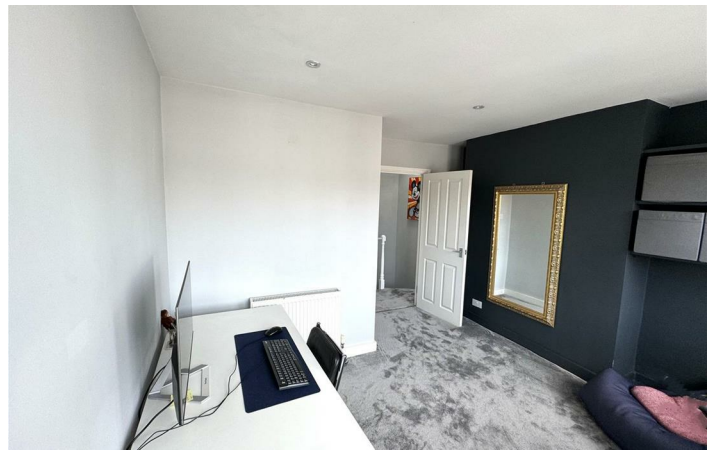
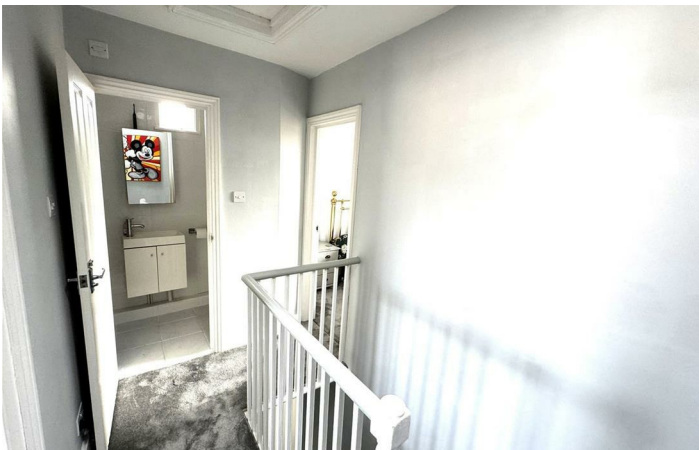
, Farnham, GU9 7NW



- Chain free
- Two double bedrooms
- Bathroom
- Parking permits can be applied for
- In the heart of town with views
- Fitted kitchen
- Landing with skylight
- Private outside space
- Lounge/dining room
- Private entrance with stairs

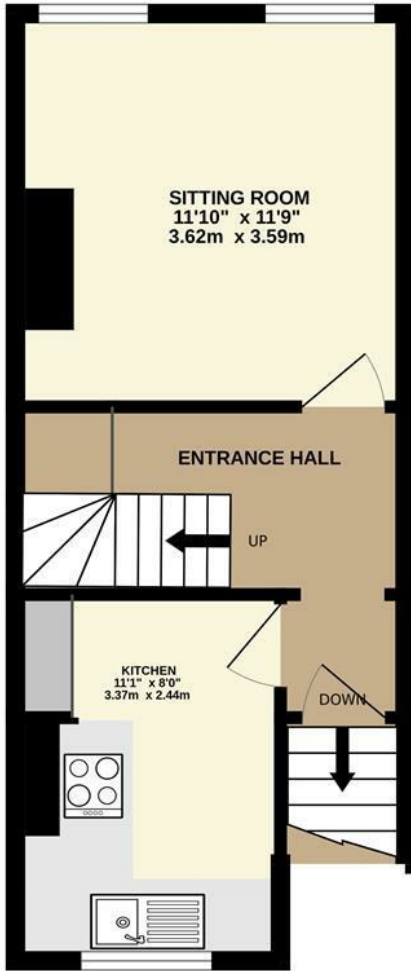


[Directions](#)

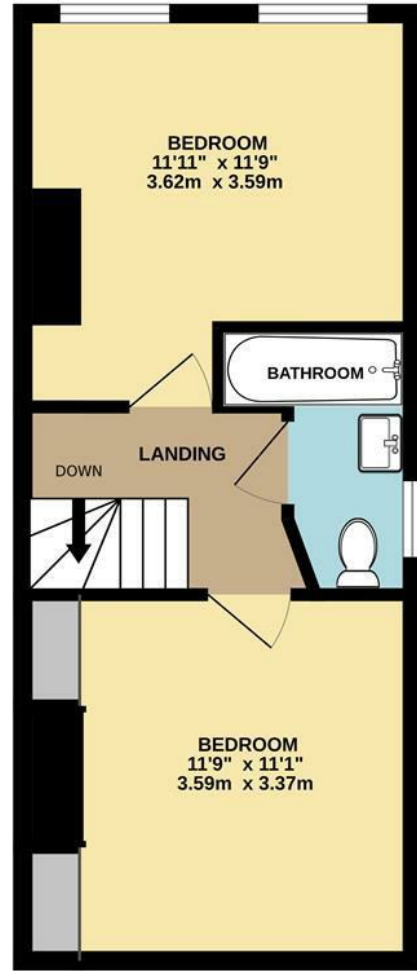


Floor Plan

GROUND FLOOR
316 sq.ft. (29.3 sq.m.) approx.



1ST FLOOR
324 sq.ft. (30.1 sq.m.) approx.



TOTAL FLOOR AREA : 639 sq.ft. (59.4 sq.m.) approx.

Whilst every attempt has been made to ensure the accuracy of the floorplan contained here, measurements of doors, windows, rooms and any other items are approximate and no responsibility is taken for any error, omission or mis-statement. This plan is for illustrative purposes only and should be used as such by any prospective purchaser. The services, systems and appliances shown have not been tested and no guarantee as to their operability or efficiency can be given.
Made with Metropix ©2024

These particulars, whilst believed to be accurate are set out as a general outline only for guidance and do not constitute any part of an offer or contract. Intending purchasers should not rely on them as statements of representation of fact, but must satisfy themselves by inspection or otherwise as to their accuracy. No person in this firm's employment has the authority to make or give any representation or warranty in respect of the property.

