



Hollowdene Court Shortfield Common Road Frensham, Farnham, GU10 3BW

A substantial wing of a country house situated in a prime village location opposite the cricket and recreation ground in the popular village of Frensham. The property offers excellent accommodation over 3 floors with 2 large reception rooms including a stunning sitting room with high ornate ceiling, open fireplace and large bay window. The spacious kitchen/breakfast room enjoys views over the garden and has a useful walk in larder. There are 3 bedrooms and 2 en suites on the first floor and a further 4 bedrooms and shower room on the second floor. Outside the well tended grounds are about 0.55 acre with a southerly aspect and a double garage and parking. Within a minutes' walk is the local village shop, the Holly Bush public house and Frensham cricket, tennis and bowls clubs.

Price Guide £1,800,000

Hollowdene Court Shortfield Common Road

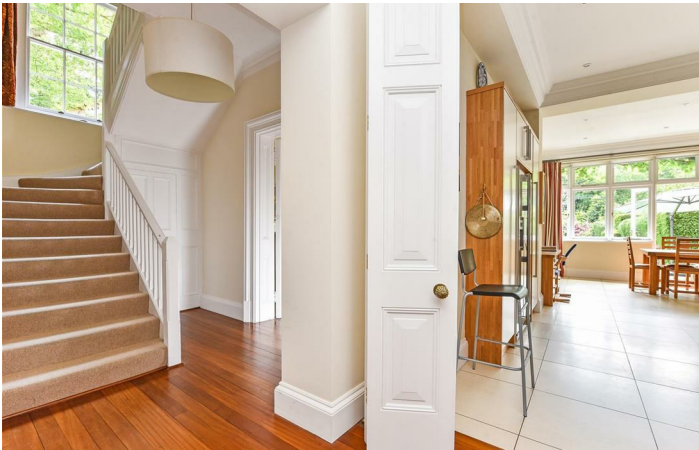
Frensham, Farnham, GU10 3BW



- Entrance hall with cloakroom/utility room
- Large kitchen/breakfast room with walk in pantry
- Further shower room, en suite bathroom and cloakroom
- Prime village location close to the village amenities and overlooking Hollowdene recreation ground
- Magnificent sitting room with open fireplace and bay window
- Master bedroom with en suite and views
- Garden and plot of about 0.55 acre
- Dining room
- 6 further bedrooms
- Detached double garage, storeroom with cellar



[Directions](#)



Floor Plan



These particulars, whilst believed to be accurate are set out as a general outline only for guidance and do not constitute any part of an offer or contract. Intending purchasers should not rely on them as statements of representation of fact, but must satisfy themselves by inspection or otherwise as to their accuracy. No person in this firm's employment has the authority to make or give any representation or warranty in respect of the property.

