



## 10 Rookwood Court , Guildford, GU2 4EJ

A well presented ground floor apartment set in a sought after location within half a mile of Guildford's town centre and mainline train station. The property benefits from a good size sitting/dining room with a pleasant front aspect with access to a covered patio area. There is a fully fitted modern kitchen, double bedrooms, bathroom, shower room and entrance hall. There is a garage, residents parking and communal grounds.

**Price Guide £425,000**

# 10 Rookwood Court

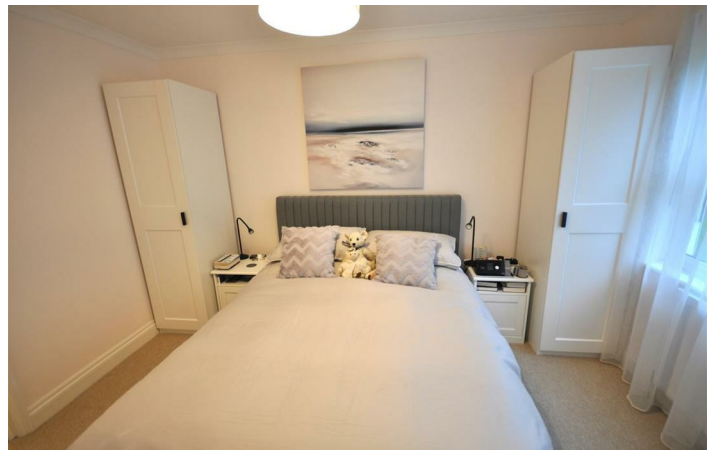
, Guildford, GU2 4EJ



- Sitting/dining room
- Bathroom/separate shower room
- Single garage/residents parking
- Close to town centre and mainline train station
- Two double bedrooms
- Reception hall
- Covered private patio
- Modern fully fitted kitchen.
- Secure entrance/reception area
- Communal grounds

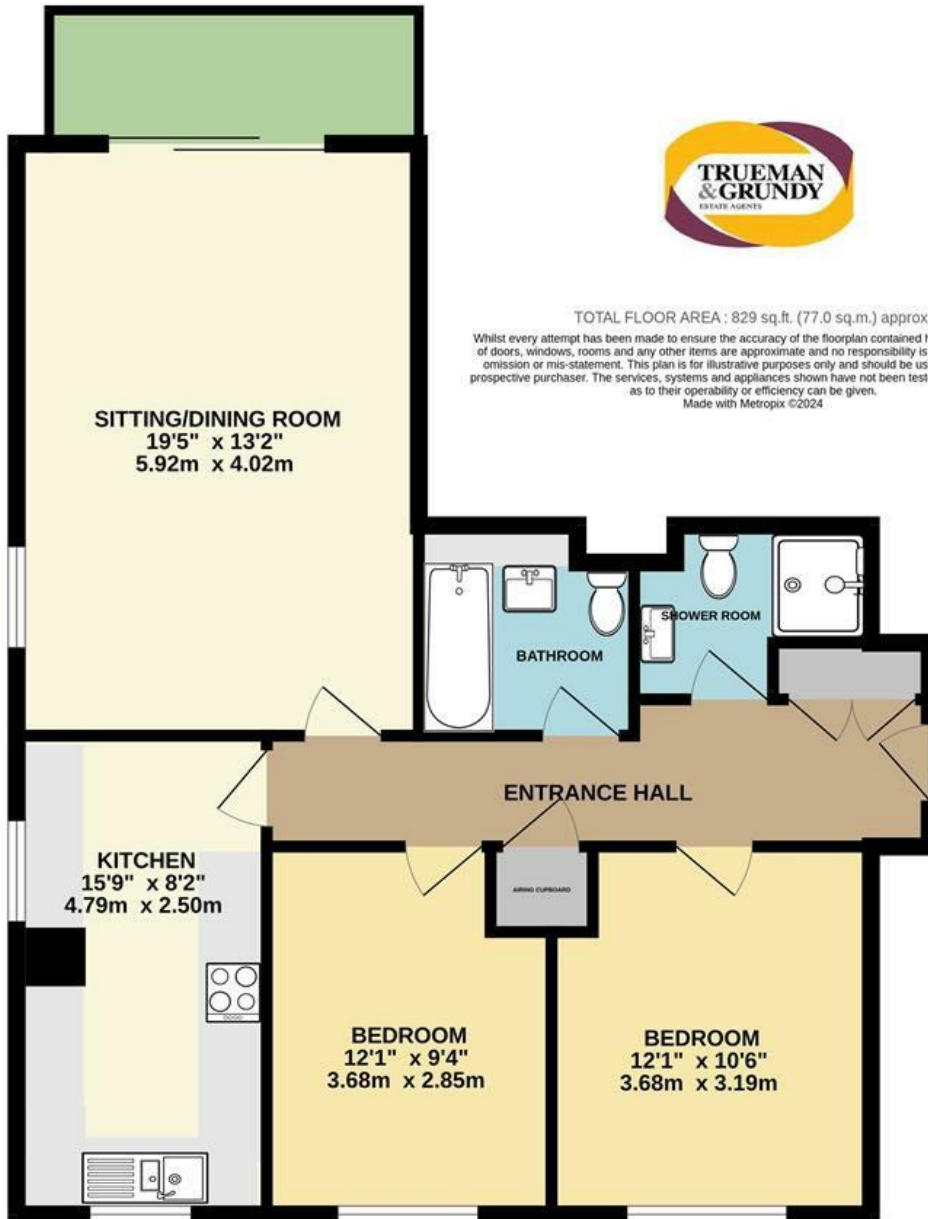


[Directions](#)



# Floor Plan

GROUND FLOOR  
829 sq.ft. (77.0 sq.m.) approx.



These particulars, whilst believed to be accurate are set out as a general outline only for guidance and do not constitute any part of an offer or contract. Intending purchasers should not rely on them as statements of representation of fact, but must satisfy themselves by inspection or otherwise as to their accuracy. No person in this firm's employment has the authority to make or give any representation or warranty in respect of the property.

