



5 Park Row , Farnham, GU9 7JH

A tastefully renovated and modernised three bedroom three bathroom semi detached character cottage in the heart of the town centre. Set over three floors the property benefits from enclosed rear courtyard garden and side access. The two first floor double bedrooms have en-suite showers and the loft room master bedroom with stunning castle views has an en-suite bathroom. The ground floor comprises of a porch, entrance hall, cloakroom, fitted kitchen and two reception rooms.

Price Guide £725,000

5 Park Row

, Farnham, GU9 7JH



- Town Centre/Castle views
- Fully refurbished
- Entrance porch and hall
- Fitted kitchen
- Cloakroom
- Two reception rooms
- Three double beds all en-suite
- Rear courtyard/side access
- Easy access to Farnham Park
- Parking permit on application.

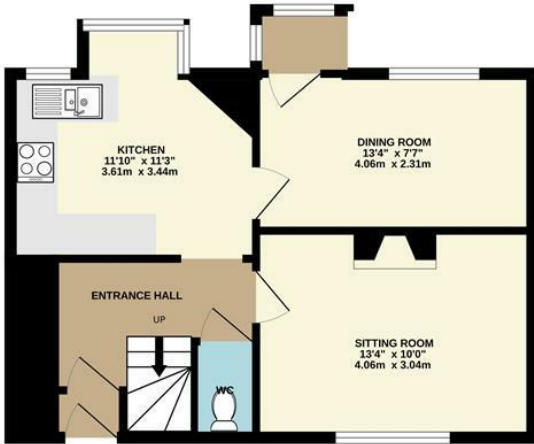


[Directions](#)

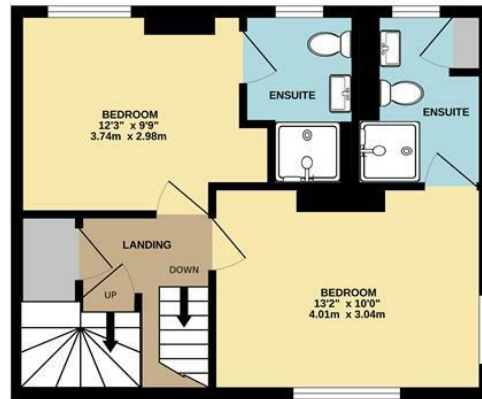


Floor Plan

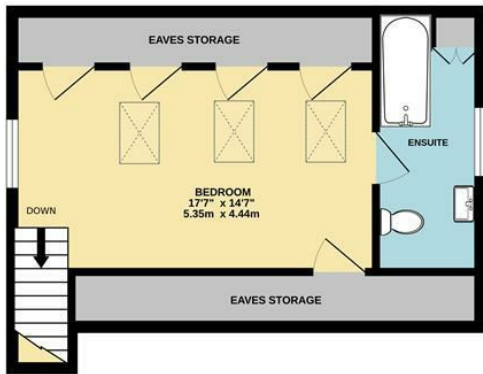
GROUND FLOOR
439 sq.ft. (40.8 sq.m.) approx.



1ST FLOOR
402 sq.ft. (37.3 sq.m.) approx.



2ND FLOOR
349 sq.ft. (32.4 sq.m.) approx.



TOTAL FLOOR AREA : 1189 sq.ft. (110.5 sq.m.) approx.

Whilst every attempt has been made to ensure the accuracy of the floorplan contained here, measurements of doors, windows, rooms and any other items are approximate and no responsibility is taken for any error, omission or mis-statement. This plan is for illustrative purposes only and should be used as such by any prospective purchaser. The services, systems and appliances shown have not been tested and no guarantee as to their operability or efficiency can be given.
Made with Metropix ©2023

These particulars, whilst believed to be accurate are set out as a general outline only for guidance and do not constitute any part of an offer or contract. Intending purchasers should not rely on them as statements of representation of fact, but must satisfy themselves by inspection or otherwise as to their accuracy. No person in this firm's employment has the authority to make or give any representation or warranty in respect of the property.

