

over **20** successful
years of
moving people

**ATWELL
MARTIN**
ESTATE AGENTS



Piernik Close Swindon

£150,000



A Modern and well presented TOP FLOOR, TWO bedroom apartment which features a balcony. We are delighted to offer for sale this fantastic apartment which is in walking distance to the Orbital shopping centre and other amenities. Allocated parking is available. **MUST VIEW TO APPRECIATE.**

Haydon End

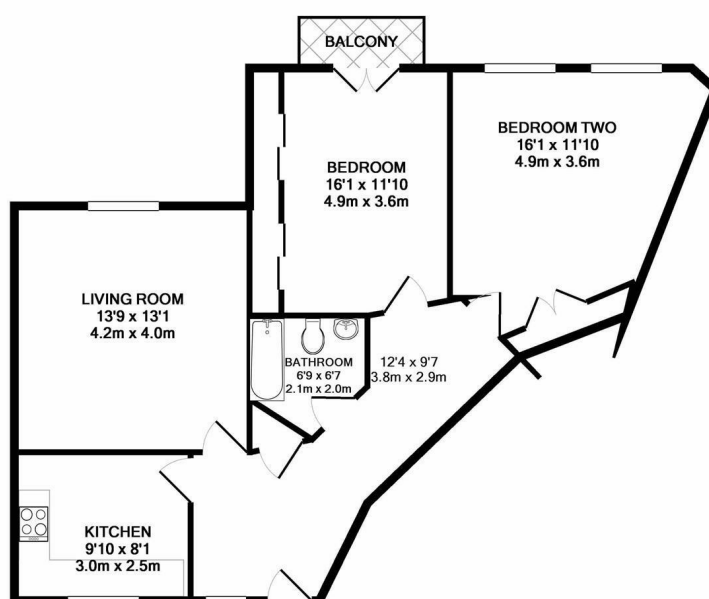
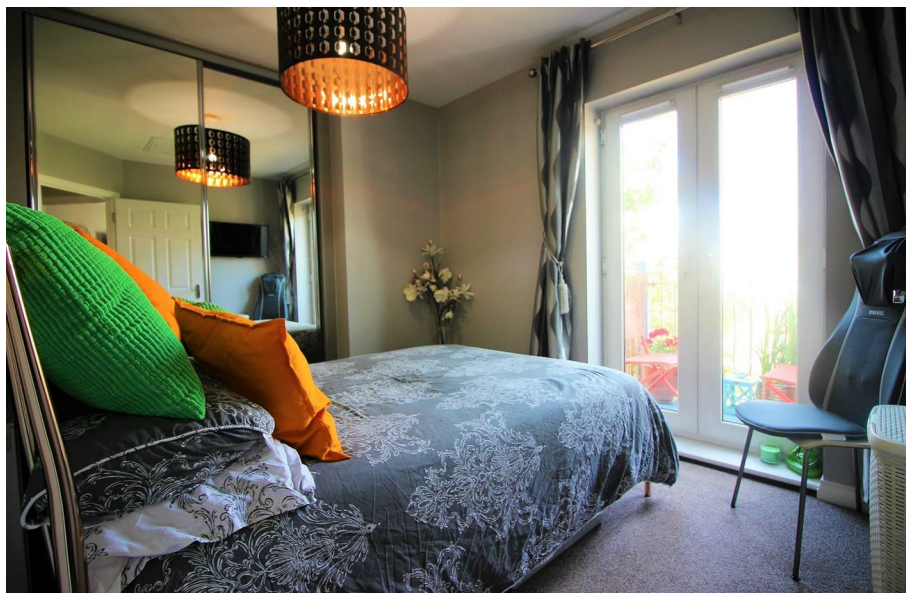
Haydon End is a popular residential area located to the northern side of the busy town of Swindon. Orchid Vale Primary School is within close proximity. Priory Vale offers a new village centre with a range of leisure and lifestyle amenities. The District centre houses the library and Asda Walmart retail park with a wide range of outlets and local schools caters for all ages. Thamesdown Drive provides direct access to the A419 which links with the M4 motorway at Junction 15 to the South and Cirencester and Cotswolds to the north. Reading London and Oxford are within easy reach.

Accommodation

The apartment consists of - Entrance hallway, fitted kitchen with washing machine and fridge freezer included, family bathroom with shower and bath, TWO DOUBLE bedrooms, one with a balcony and built in double wardrobes, the other with a walk in wardrobe.

Lease Info

99 year lease. Ground and maintenance rent is £115.00 per month.



Energy Efficiency Rating			
Very energy efficient - lower running costs	Energy efficient - lower running costs	Not energy efficient - higher running costs	EU Directive 2002/91/EC
A	B	C	D
E	F	G	
England & Wales			
Environmental Impact (CO ₂) Rating			
Very environmentally friendly - lower CO ₂ emissions	Environmentally friendly - lower CO ₂ emissions	Not environmentally friendly - higher CO ₂ emissions	EU Directive 2002/91/EC
A	B	C	D
E	F	G	
England & Wales			