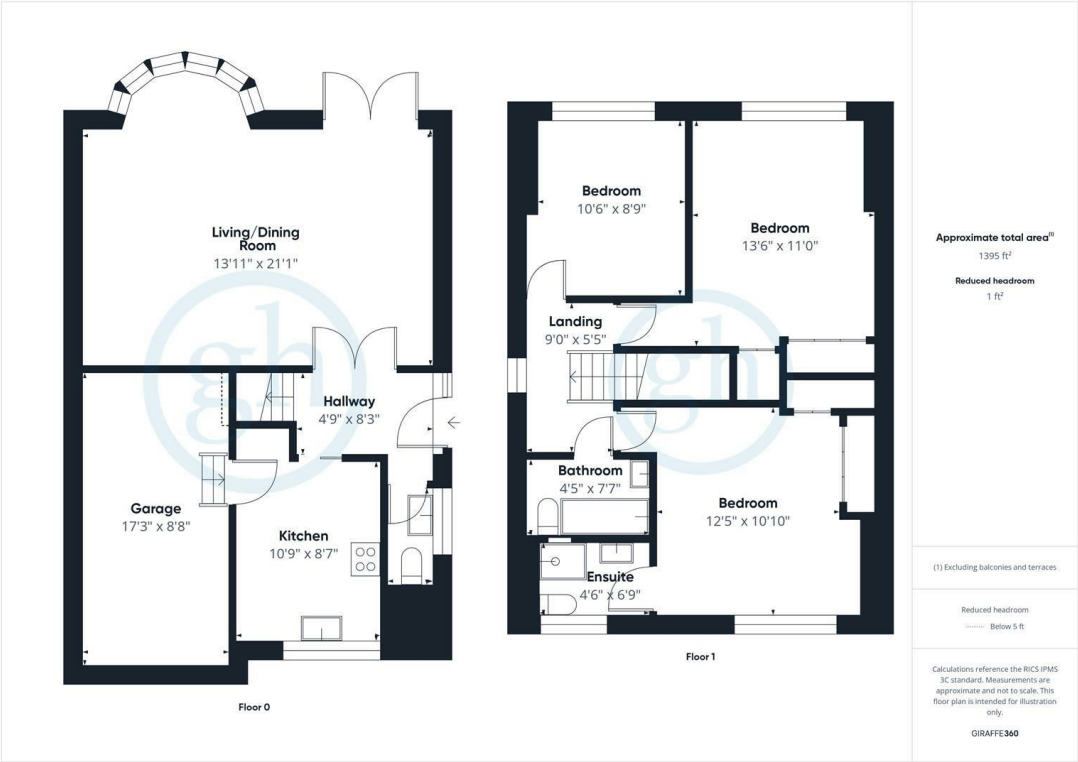




Fore Street, Pinner, HA52JF
£2,500

A light filled and spacious family home with THREE DOUBLE BEDROOMS and TWO BATHROOMS. Accommodation briefly comprises: larger than average living/dining room, modern fitted kitchen, master bedroom with en suite shower room, two further DOUBLE bedrooms and a modern family bathroom suite. The property benefits include: downstairs wc, good size entrance hall, secluded rear garden, garage via own drive, side access, double glazing and gas central heating. Superbly located between Old Eastcote, Pinner Village and Ruislip High Street and their variety of shops, including Waitrose Supermarket and numerous restaurants, pizza outlets and coffee bars. The Metropolitan/Piccadilly line station based at both Eastcote and Ruislip offers swift and regular connections to Baker Street and the City whilst for families there are a number of highly regarded schools in the area. The property is also located within walking distance from local parks, woodland trails and Highgrove Leisure Centre.



Energy Efficiency Rating		
	Current	Potential
Very energy efficient - lower running costs		
(92 plus) A		
(81-91) B		
(69-80) C		
(55-68) D		
(39-54) E		
(21-38) F		
(1-20) G		
Not energy efficient - higher running costs		
England & Wales		EU Directive 2002/91/EC

You may download, store and use the material for your own personal use and research. You may not republish, retransmit, redistribute or otherwise make the material available to any party or make the same available on any website. These particulars, whilst believed to be accurate are set out as a general outline only for guidance and do not constitute any part of an offer or contract. Intending purchasers should not rely on them as statements or representation of fact, but must satisfy themselves by inspection or otherwise as to their accuracy. No person in this firms employment has the authority to make or give any representation or warranty in respect of the property.