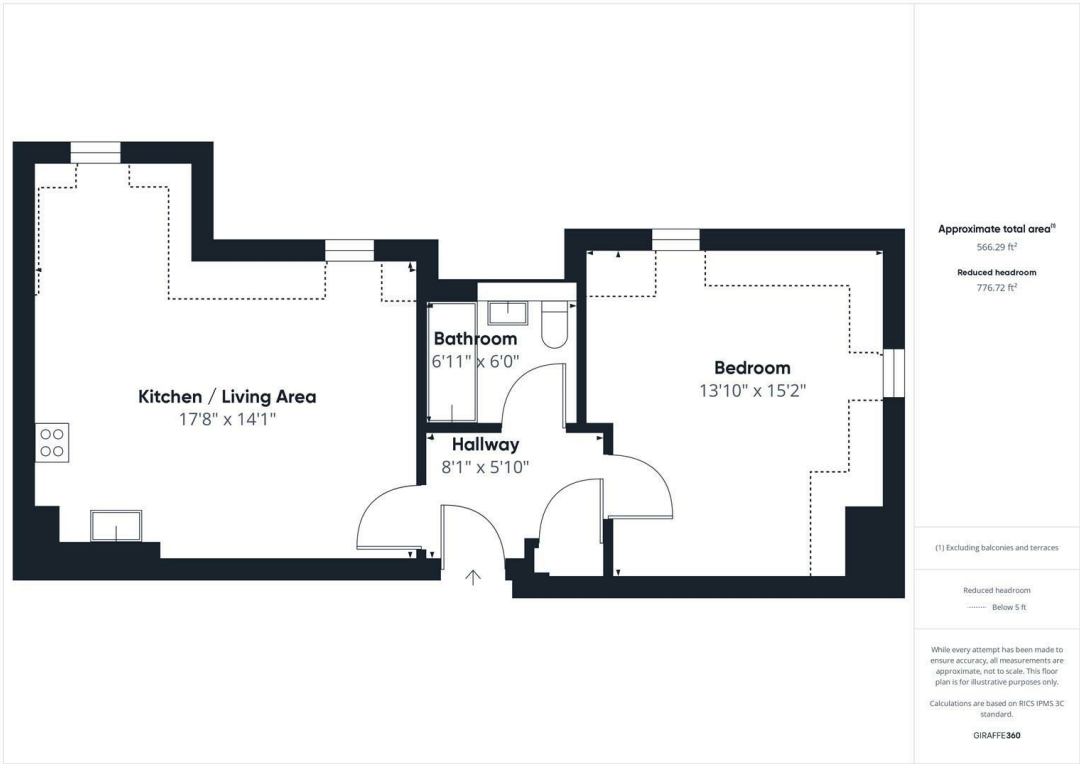




Highgrove House, Ruislip, HA4 8BP
£1,450

Set within this character filled Grade II Listed manor house, surrounded by landscaped communal gardens, this ONE DOUBLE BEDROOM, second floor apartment, is located close to the amenities and transport links of Eastcote, Ruislip Manor and Ruislip.

The property comprises an entrance hallway, spacious open plan fitted kitchen/reception room, double bedroom and modern bathroom and benefits from Gas Central Heating and an allocated parking space. WATER CHARGES ARE INCLUDED



Energy Efficiency Rating		
	Current	Potential
Very energy efficient - lower running costs		
(92 plus) A		
(81-91) B		
(69-80) C		
(55-68) D		
(39-54) E		
(21-38) F		
(1-20) G		
Not energy efficient - higher running costs		
England & Wales	EU Directive 2002/91/EC	

You may download, store and use the material for your own personal use and research. You may not republish, retransmit, redistribute or otherwise make the material available to any party or make the same available on any website. These particulars, whilst believed to be accurate are set out as a general outline only for guidance and do not constitute any part of an offer or contract. Intending purchasers should not rely on them as statements or representation of fact, but must satisfy themselves by inspection or otherwise as to their accuracy. No person in this firms employment has the authority to make or give any representation or warranty in respect of the property.