



Northdown Close, Middlesex, HA4 6JY

A two bedroom maisonette set equidistant to Central/Metropolitan & Piccadilly lines. This ground floor property briefly comprises: Two good size bedrooms, lounge, modern bathroom suite and fitted kitchen. The property benefits include: Double glazing, gas central heating and own garden.



Full Description

A two bedroom maisonette set equidistant to Central/Metropolitan & Piccadilly lines. This ground floor property briefly comprises: Two good size bedrooms, lounge, modern bathroom suite and fitted kitchen. The property benefits include: Double glazing, gas central heating and own garden.



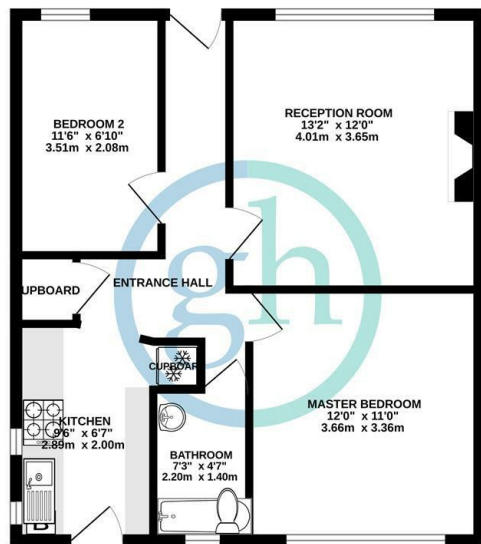
92 High Street, Ruislip, Middlesex, HA4 8LS

T: 01895 625999

lettings@gibsonhoney.co.uk

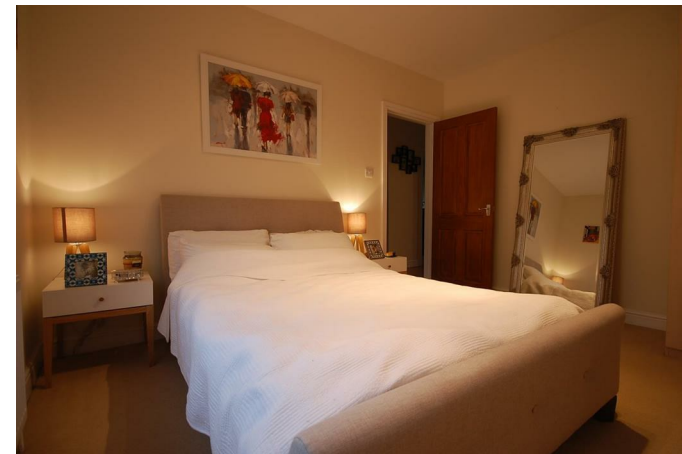
www.gibsonhoney.co.uk

GROUND FLOOR
553 sq.ft. (51.4 sq.m.) approx.



TOTAL FLOOR AREA: 553 sq.ft. (51.4 sq.m.) approx.
Whilst every attempt has been made to ensure the accuracy of the floorplan contained here, measurements of actual buildings taken at any time should not be relied upon as a basis for any offer, decision or sale statement. This plan is for illustrative purposes only and should be used as such by any prospective purchaser. The services, systems and approvals shown here are based on the information given to the agent at the time of completion of the plan. Measurements are given to the nearest millimetre.

Energy Efficiency Rating		Current	Potential
Very energy efficient - lower running costs			
(92 plus) A			
(81-91) B			
(69-80) C		67	76
(55-68) D			
(39-54) E			
(21-38) F			
(1-20) G			
Not energy efficient - higher running costs			
England & Wales		EU Directive 2002/91/EC	



You may download, store and use the material for your own personal use and research. You may not republish, retransmit, redistribute or otherwise make the material available to any party or make the same available on any website. These particulars, whilst believed to be accurate are set out as a general outline only for guidance and do not constitute any part of an offer or contract. Intending purchasers should not rely on them as statements or representation of fact, but must satisfy themselves by inspection or otherwise as to their accuracy. No person in this firm's employment has the authority to make or give any representation or warranty in respect of the property.