



Northdown Close, Middlesex, HA4 6JY



gibsonhoney

A two bedroom maisonette set equidistant to Central/Metropolitan & Piccadilly lines. This ground floor property briefly comprises: Two good size bedrooms, lounge, modern bathroom suite and fitted kitchen. The property benefits include: Double glazing, gas central heating and own garden.



Full Description

A two bedroom maisonette set equidistant to Central/Metropolitan & Piccadilly lines. This ground floor property briefly comprises: Two good size bedrooms, lounge, modern bathroom suite and fitted kitchen. The property benefits include: Double glazing, gas central heating and own garden.




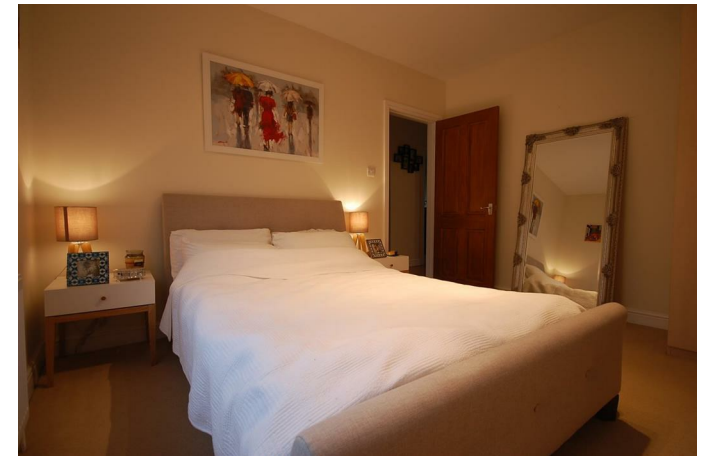
92 High Street, Ruislip, Middlesex, HA4 8LS

T: 01895 625999

lettings@gibsonhoney.co.uk

www.gibsonhoney.co.uk

Energy Efficiency Rating		Current	Potential
<i>Very energy efficient - lower running costs</i>			
(92 plus) A			
(81-91) B			
(69-80) C		67	76
(55-68) D			
(39-54) E			
(21-38) F			
(1-20) G			
<i>Not energy efficient - higher running costs</i>			
England & Wales		EU Directive 2002/91/EC 	



You may download, store and use the material for your own personal use and research. You may not republish, retransmit, redistribute or otherwise make the material available to any party or make the same available on any website. These particulars, whilst believed to be accurate are set out as a general outline only for guidance and do not constitute any part of an offer or contract. Intending purchasers should not rely on them as statements or representation of fact, but must satisfy themselves by inspection or otherwise as to their accuracy. No person in this firm's employment has the authority to make or give any representation or warranty in respect of the property.