



Melcombe Court, Dorset Square, Marylebone, NW1

£1,200 Per Week

Contact us about this property

337 West End Lane, West Hampstead, London, NW6 1RS

E: nw6@alexanders-uk.com

T: 0207 431 0666

www.alexanders-uk.com

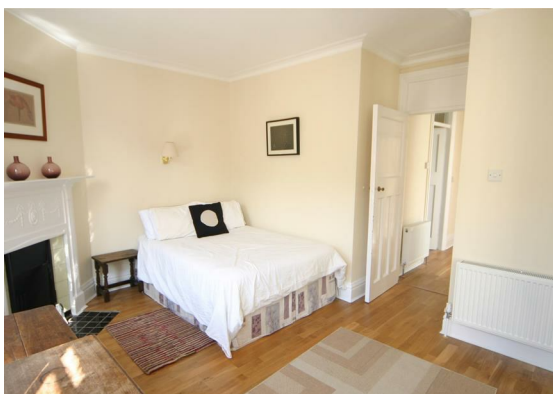
Alexanders

Property Consultants




About This Property

Recently refurbished the apartment is situated on the fifth (top) floor of this mansion block and overlooks Dorset Square. The property features a large reception room, separate fitted kitchen, 4 bedrooms (3 doubles), family bathroom, passenger lift and entryphone system. The building further benefits from its close location to both Marylebone and Baker Street stations and with Regents Park only moments away this is ideal for families and professionals alike.



Alexanders

Property Consultants

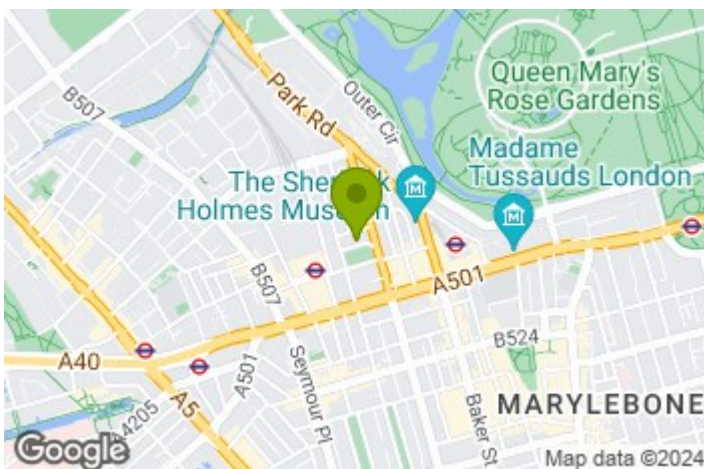
 4 Bedroom |  1 Reception |  1 Bathroom |  null

Property Features

- 4 bedrooms
- Reception
- Family bathroom
- Separate fitted eat-in kitchen
- Mansion block
- Lifts
- CCTV
- Moments to Marylebone station
- Close to Baker St station & Regents Park

Property Size

sq ft



Contact us about this property

337 West End Lane, West Hampstead, London, NW6 1RS

E: nw6@alexanders-uk.com

T: 0207 431 0666

www.alexanders-uk.com