



Liberty Street, Stockwell, London SW9

£500,000 | Leasehold

Contact us about this property

337 West End Lane, West Hampstead, London, NW6 1RS

E: nw6@alexanders-uk.com

T: 0207 431 0666

www.alexanders-uk.com

Alexanders

Property Consultants



About This Property





This bright and spacious ground floor garden flat, situated in a period conversion on a quiet residential street, is conveniently located close to Oval and Stockwell stations and local amenities.

The 671 sq ft property is in a liveable condition but in need of renovation throughout to realise its full potential. It features two double bedrooms, a large reception room, separate fitted eat-in kitchen and bathroom. The property further benefits from a private rear garden, high ceilings and large windows providing excellent natural light.

VIEWINGS HIGHLY RECOMMENDED!

Alexanders

Property Consultants

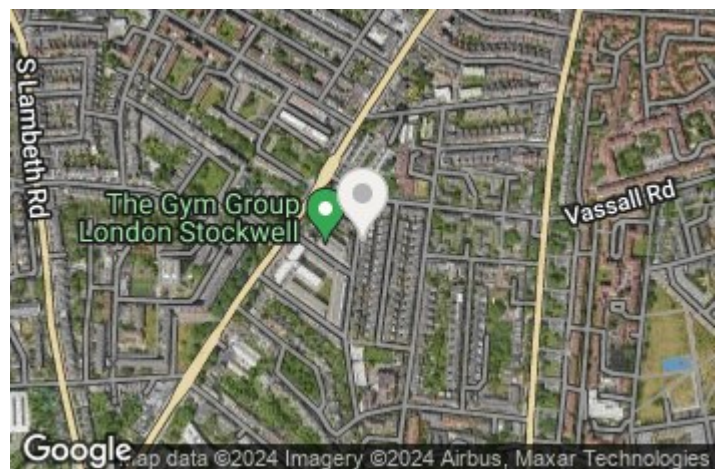
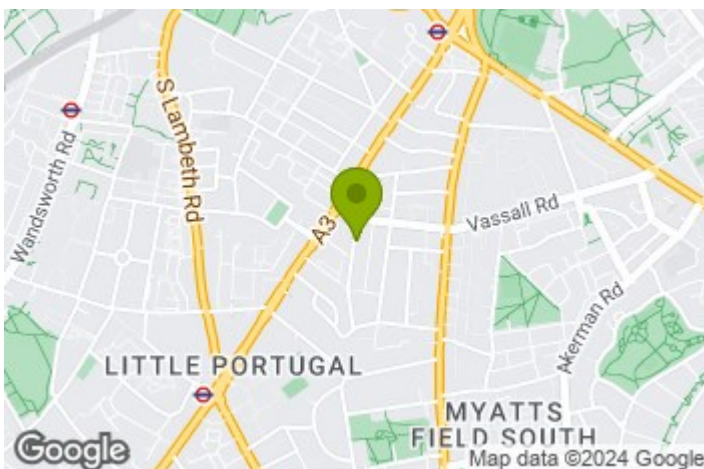
 2 Bedroom |  1 Reception |  1 Bathroom |  65 D

Property Features

- 2 Double Bedrooms
- Bright & Spacious Reception
- Separate Fitted Eat-in Kitchen
- Family Bathroom
- Private Rear Garden
- High ceilings
- Large Windows
- 10 mins to Oval & Stockwell stations

Property Size

671.00 sq ft

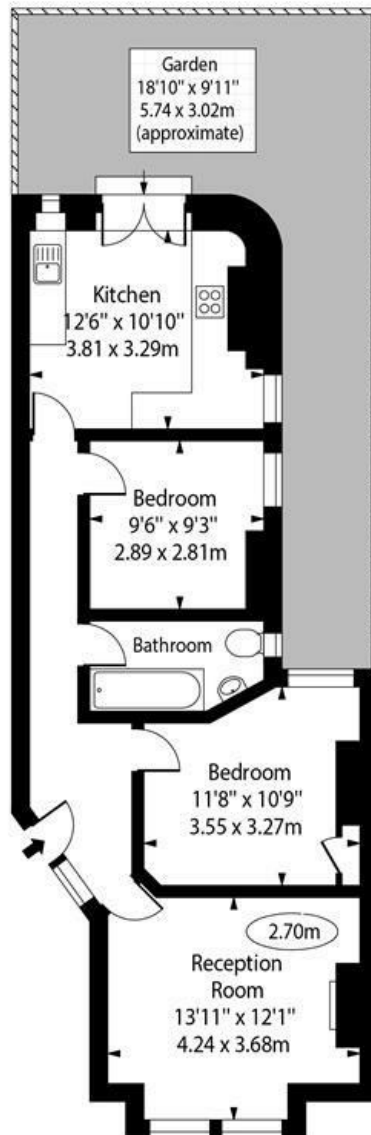


Nearest Transport Links

Alexanders

Property Consultants

Liberty Street, SW9



Ground Floor

Approx Gross Internal Area 671 Sq Ft - 62.33 Sq M

For Illustration Purposes Only - Not To Scale Floor Plan by www.nogaphotostudio.com Ref: No.49090

This floor plan should be used as a general outline for guidance only. Any intending purchaser or lessee should satisfy themselves by inspection, searches, enquiries and full survey as to the correctness of each statement. Any areas, measurements or distances quoted are approximate and should not be used to value a property or be the basis of any sale or let.

Contact us about this property

337 West End Lane, West Hampstead, London, NW6 1RS

E: nw6@alexanders-uk.com

T: 0207 431 0666

www.alexanders-uk.com

