



Haughton Street, Gee Cross, SK14 1QR

An absolutely stunning bay-fronted period terraced home enjoying a slightly elevated position on the road with a sunny, south-westerly facing rear garden. The accommodation has been greatly improved by the current owners and includes an entrance vestibule, spacious living room, modern fitted kitchen, two good sized bedrooms and a modern shower room. Gas fired central heating is installed and is complimented by gas fired central heating. Tenure: Long Leasehold. Council Tax Band: A. EPC rating: to follow.

Price Guide: Offers Over £200,000



ENTRANCE VESTIBULE

LOUNGE

14' 1" plus bay x 10' 0" (4.29m x 3.05m)



BREAKFAST KITCHEN

13' 0" x 9' 2" (3.96m x 2.79m)



FIRST FLOOR LANDING

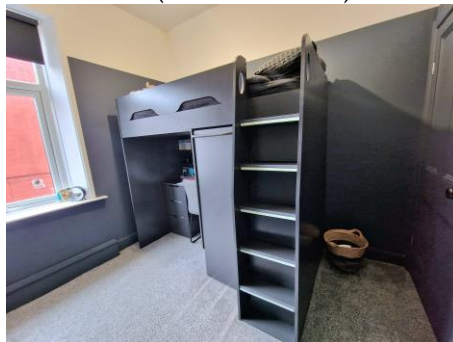
BEDROOM ONE

14' 5" x 13' 0" (4.39m x 3.96m)



BEDROOM TWO

9' 11" x 9' 6" (3.02m x 2.89m)



SHOWER ROOM

6' 9" x 5' 4" (2.06m x 1.62m)

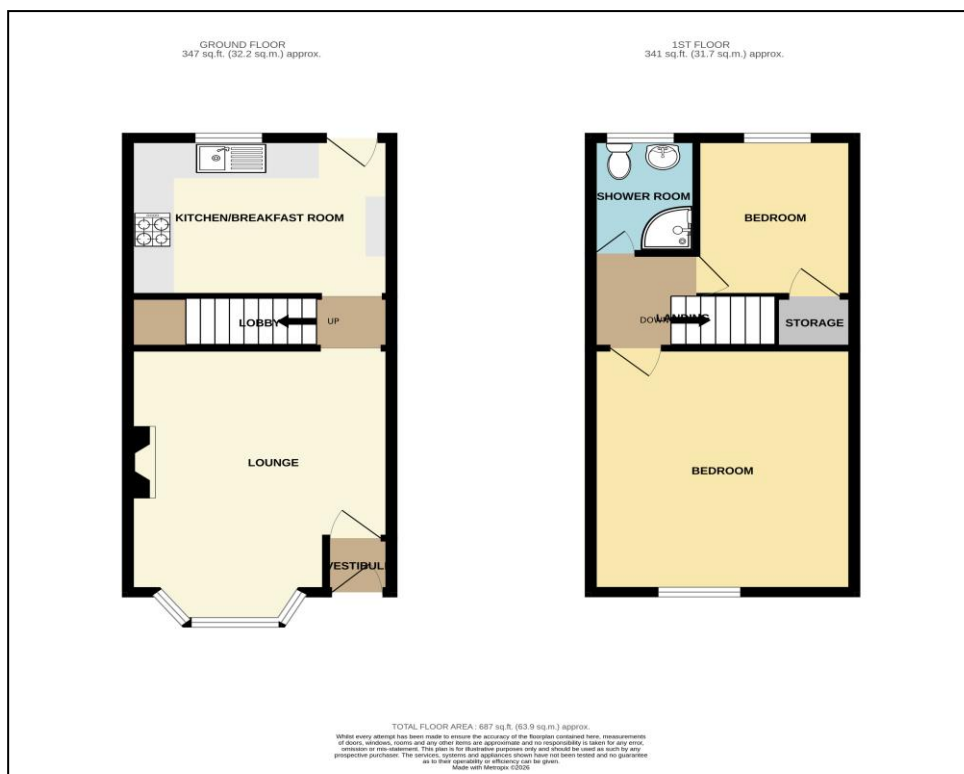


OUTSIDE



VIEWING ARRANGEMENTS

Viewing is strictly by appointment with Thomas Lardner Romiley Office - telephone number 0161 494 5136.



Thomas Lardner Estate Agents, which is a trading name of Romiley Residential Ltd, for themselves and for the vendors or lessors of this property whose agents they are give notice that: (1) all measurements are approximate and any plans provided are not to scale; (2) the particulars are set out as a general outline only for the guidance of intending purchasers or lessors, and do not constitute, nor constitute part of, an offer or contract; (3) we have not tested any apparatus, equipment, fixtures, fittings or services, and so cannot verify that they are in working order or fit for purpose; (4) solicitors should confirm moveable items described in these particulars are, in fact, included in the sale since circumstances change during marketing or negotiations.

T709 Printed by Ravensworth 01670 713330