

Leigh Street, Hyde. SK14 2RP

This immaculately presented period terraced home is sure to interest first time buyers. Located conveniently close to Hyde town centre and Gee Cross village. The property features: living room with stove, dining kitchen with high gloss units, breakfast Island and integrated appliances, ground floor office and under stairs cupboard currently housing washing machine and dryer. There are patio doors leading onto the courtyard garden. To the first floor are two good sized bedrooms and modern bathroom. Gas central heating is installed (boiler fitted in late 2025) and double glazing. To rear is an enclosed patio garden that enjoys a sunny aspect. EPC rating TBC. Tenure Freehold. Council Tax Band B.

Offers In Excess of £200,000



LIVING ROOM

13' 8" x 11' 8" (4.16m x 3.55m)



OFFICE / PLAYROOM

9' 2" x 6' 9" (2.79m x 2.06m)



BATHROOM

9' 2" x 6' 8" (2.79m x 2.03m)



FITTED KITCHEN DINER

15' 3" x 12' 0" (4.64m x 3.65m)



BEDROOM ONE

18' 3" x 14' 0" (5.56m x 4.26m)



OUTSIDE



BEDROOM TWO

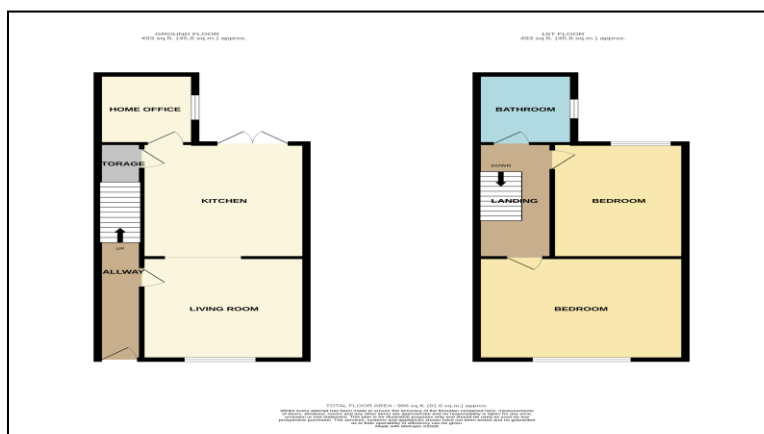
15' 5" x 9' 7" (4.70m x 2.92m)



VIEWING ARRANGEMENTS

Appointment is strictly by appointment with Thomas Lardner Romiley Office - telephone number 0161 494 5136.

EPC Rating - TBC
TENURE - FREEHOLD
Council Tax Band - B



Thomas Lardner Estate Agents, which is a trading name of Stockport Residential Ltd, for themselves and for the vendors or lessors of this property whose agents they are give notice that: (1) all measurements are approximate and any plans provided are not to scale; (2) the particulars are set out as a general outline only for the guidance of intending purchasers or lessors, and do not constitute, nor constitute part of, an offer or contract; (3) we have not tested any apparatus, equipment, fixtures, fittings or services, and so cannot verify that they are in working order or fit for purpose; (4) solicitors should confirm moveable items described in these particulars are, in fact, included in the sale since circumstances change during marketing or negotiations.

T709 Printed by Ravensworth 01670 713330