



## Greenway, Romiley. SK6 4HH

This generous sized mid mews home features a good sized lawned rear garden. Offered with no onward chain the property is located on a popular development convenient for Romiley Village and in the catchment for Romiley Primary and Marple Hall Secondary Schools. The accommodation is in need of some updating and features: Entrance hall, lounge, dining kitchen, 2 bedrooms and bathroom; Gas central heating is installed along with uPVC double glazing. There is an enclosed front garden. Sure to interest first time buyers who would like to put their own stamp on a property.

Council Tax Band: A. Energy Performance Rating: TBC. Tenure: Freehold.

Offers In Excess of £210,000





### LIVING ROOM

14' 5" x 13' 2" (4.39m x 4.01m)



### BEDROOM TWO

13' 3" x 9' 7" (4.04m x 2.92m)



### OUTSIDE



### FITTED KITCHEN

10' 1" x 10' 2" (3.07m x 3.10m)



### BATHROOM

6' 1" x 5' 7" (1.85m x 1.70m)



### BEDROOM ONE

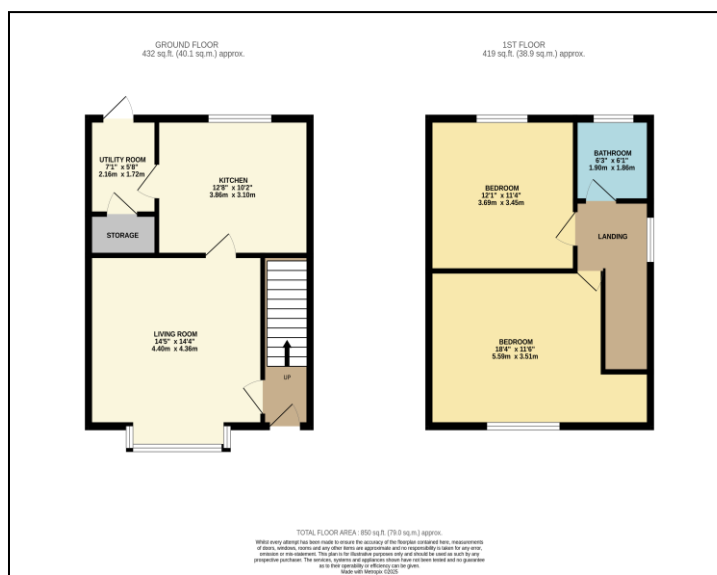
12' 6" x 10' 1" (3.81m x 3.07m)



### VIEWING ARRANGEMENTS

Appointment is strictly by appointment with Thomas Lardner Romiley Office - telephone number 0161 494 5136.

EPC Rating -  
TENURE - FREEHOLD  
Council Tax Band - A



Thomas Lardner Estate Agents, which is a trading name of Stockport Residential Ltd, for themselves and for the vendors or lessors of this property whose agents they are give notice that: (1) all measurements are approximate and any plans provided are not to scale; (2) the particulars are set out as a general outline only for the guidance of intending purchasers or lessors, and do not constitute, nor constitute part of, an offer or contract; (3) we have not tested any apparatus, equipment, fixtures, fittings or services, and so cannot verify that they are in working order or fit for purpose; (4) solicitors should confirm moveable items described in these particulars are, in fact, included in the sale since circumstances change during marketing or negotiations.

T709 Printed by Ravensworth 01670 713330