



Sunfield, Romiley, SK6 4QS

An attractive and well proportioned, two bedroom upper floor apartment situated within a few hundred yards of Romiley village centre and the railway station. The accommodation enjoys a combination of under-floor heating and storage heater and includes an entrance hall, 19'6" living room with dining space, a modern fitted kitchen, two bedrooms and a modern bathroom with shower over the bath. Outside there are attractive communal grounds including ample parking and clothes drying areas. Energy Rating: F. Council Tax Band: B.

Price Guide: £125,000



ENTRANCE HALL

16' 3" x 3' 9" (4.95m x 1.14m)



BEDROOM TWO

9' 6" x 6' 6" (2.89m x 1.98m)



LOUNGE

19' 6" x 10' 3" (5.94m x 3.12m)



BATHROOM

9' 5" x 4' 10" (2.87m x 1.47m)



SERVICE CHARGE

There is a monthly service charge of £109 which includes building insurance and external repairs, communal areas cleaning and gardening.



VIEWING ARRANGEMENTS

Viewing is strictly by appointment with Thomas Lardner Romiley Office - telephone number 0161 494 5136.

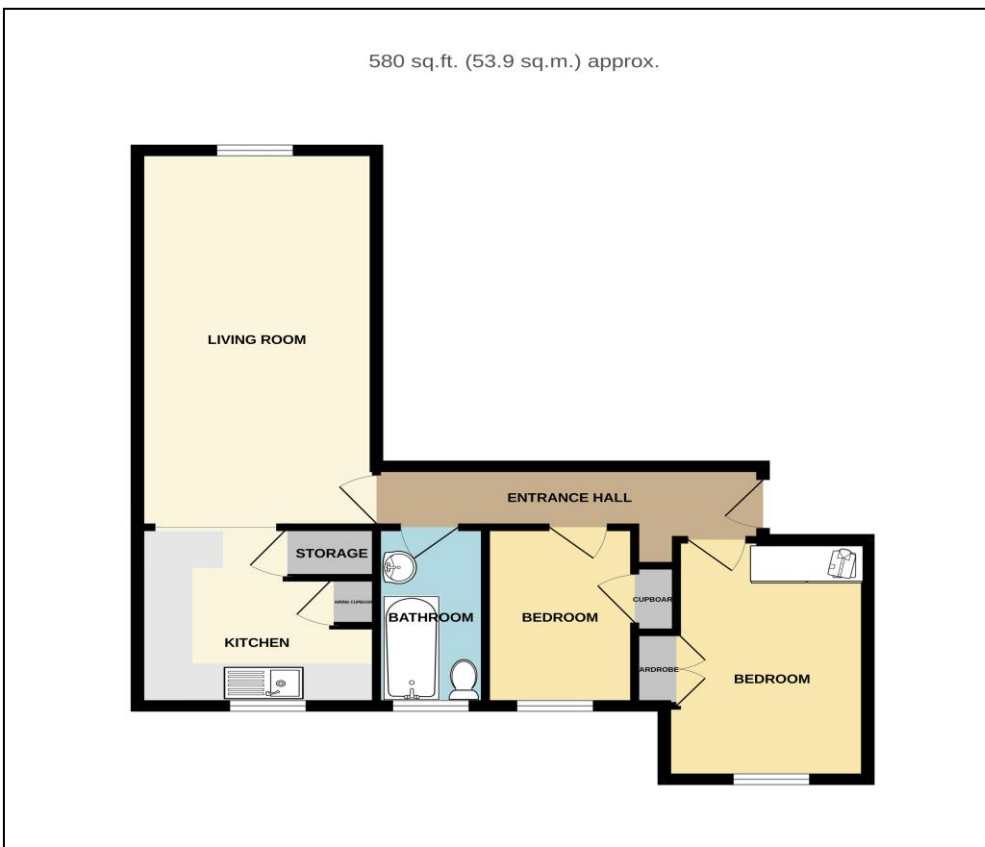
KITCHEN

10' 4" max x 9' 10" (3.15m x 2.99m)



BEDROOM ONE

12' 5" x 8' 10" (3.78m x 2.69m)



Thomas Lardner Estate Agents, which is a trading name of Romiley Residential Ltd, for themselves and for the vendors or lessors of this property whose agents they are give notice that: (1) all measurements are approximate and any plans provided are not to scale; (2) the particulars are set out as a general outline only for the guidance of intending purchasers or lessors, and do not constitute, nor constitute part of, an offer or contract; (3) we have not tested any apparatus, equipment, fixtures, fittings or services, and so cannot verify that they are in working order or fit for purpose; (4) solicitors should confirm moveable items described in these particulars are, in fact, included in the sale since circumstances change during marketing or negotiations.

T709 Printed by Ravensworth 01670 713330