



Redwood Drive, Bredbury. SK6 1SE

This well presented 2 bedroom detached true bungalow is located on this extremely popular cul-de-sac development. Set on a corner plot with detached garage and separate driveway. Offered with 'no onward chain' the bungalow is well presented throughout. The accommodation comprises Entrance hall, living room with space for dining, fitted kitchen, two bedrooms (with fitted furniture), and modern wet room. Gas central heating is installed along with uPVC double glazing. Outside there is a driveway leading to a detached garage and enclosed lawned rear garden and patio. These bungalows always prove popular and we would suggest an early viewing if you do not want to miss out.

Tenure Freehold. EPC rating TBC. Council Tax Band C.

'Asking Price' of £275,000



LIVING ROOM

17' 2" x 11' 2" (5.23m x 3.40m)



MODERN WET ROOM

6' 1" x 5' 6" (1.85m x 1.68m)



FITTED KITCHEN

10' 0" x 8' 8" (3.05m x 2.64m)



OUTSIDE



VIEWING ARRANGEMENTS

Appointment is strictly by appointment with Thomas Lardner Romiley Office - telephone number 0161 494 5136.

EPC Rating - TBC

TENURE - FREEHOLD

Council Tax Band - C

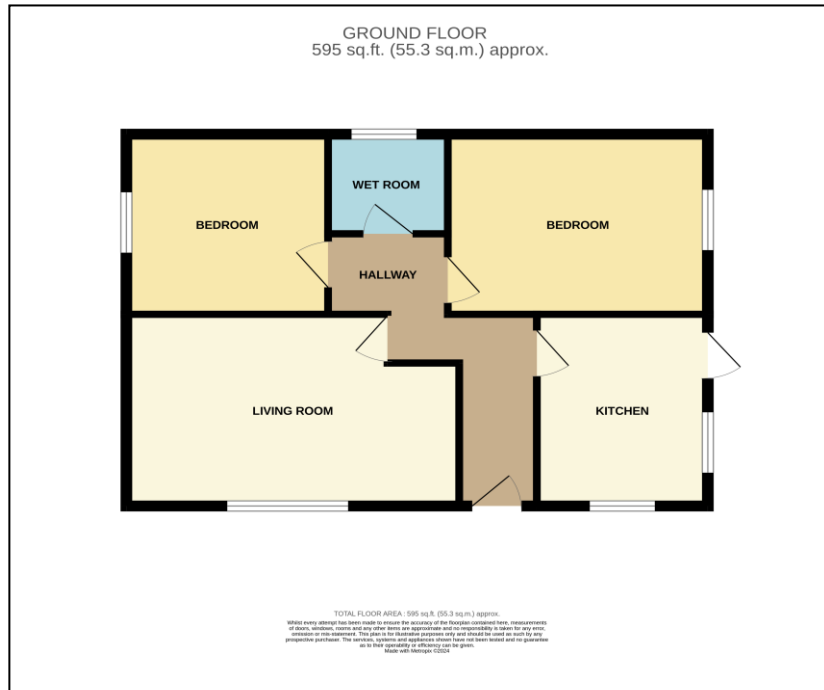
BEDROOM ONE

13' 0" x 10' 1" (3.96m x 3.07m)



BEDROOM TWO

10' 2" x 9' 1" (3.10m x 2.77m)



Thomas Lardner Estate Agents, which is a trading name of Stockport Residential Ltd, for themselves and for the vendors or lessors of this property whose agents they are give notice that: (1) all measurements are approximate and any plans provided are not to scale; (2) the particulars are set out as a general outline only for the guidance of intending purchasers or lessors, and do not constitute, nor constitute part of, an offer or contract; (3) we have not tested any apparatus, equipment, fixtures, fittings or services, and so cannot verify that they are in working order or fit for purpose; (4) solicitors should confirm moveable items described in these particulars are, in fact, included in the sale since circumstances change during marketing or negotiations.

T709 Printed by Ravensworth 01670 713330



Thomas Lardner Estate Agents
4 The Precinct, Romiley, Stockport, Cheshire SK6 4EA
0161 494 5136
enquiries@thomaslardner.com
www.thomaslardner.com