



Willow Mead, Romiley. SK6 4GA

Stunning contemporary styled modern 5 bedroom detached home located on a small select cul-de-sac close to Romiley Golf and Cricket Clubs with Romiley Village and Railway Station a few minutes walk away. The property is in the catchment for Marple Hall Secondary School and was built to a high specification by Crosby Homes in 2004 as part of a development of just 5 executive detached homes. Sympathetically extended and remodelled and with quality fixtures and fittings the property features: Large reception hall, ground floor WC, quality fitted study, 17ft family room with feature oak panelling to half height, 22ft lounge with feature fireplace, comprehensively fitted dining kitchen which opens onto an open plan living room with 3 sets of French doors to the generous sized garden and patio, utility room, 5 bedrooms, luxury family bathroom and large luxury en-suite bathroom.

Tenure Freehold. Council Tax Band F. EPC Rated C.

Offers in Excess of £800,000



FAMILY ROOM

17' 2" x 14' 3" (5.23m x 4.34m)



OPEN PLAN LIVING SPACE

29' 6" x 12' 6" (8.98m x 3.81m)



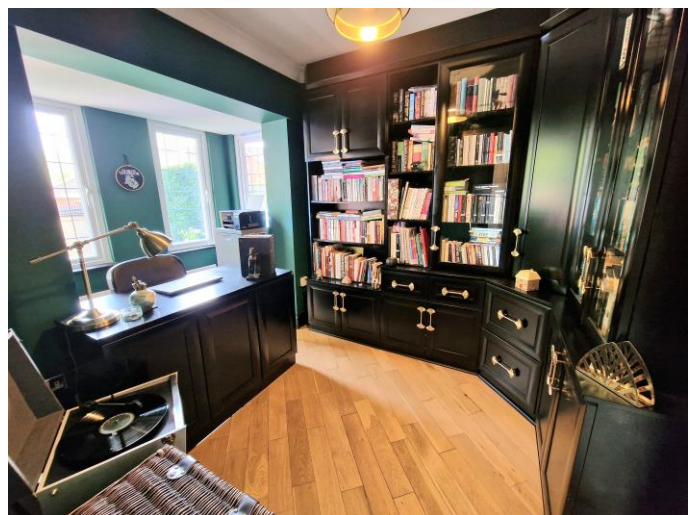
LIVING ROOM

22' 4" x 12' 0" (6.80m x 3.65m)



STUDY

12' 2" x 8' 4" (3.71m x 2.54m)



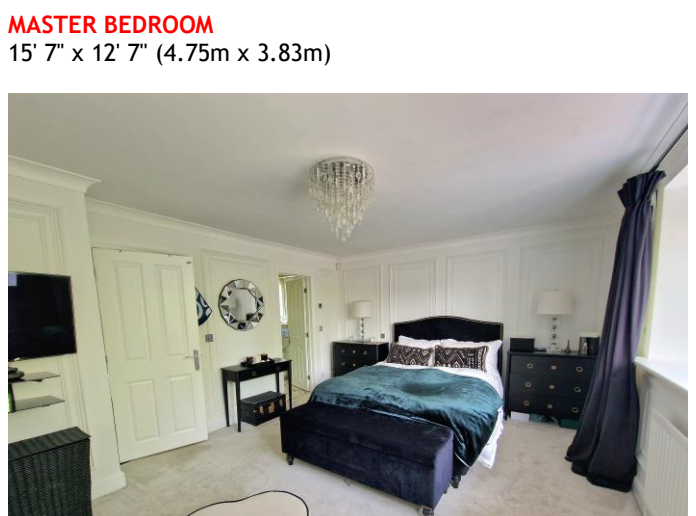
FITTED DINING KITCHEN

19' 7" x 17' 0" (5.96m x 5.18m)



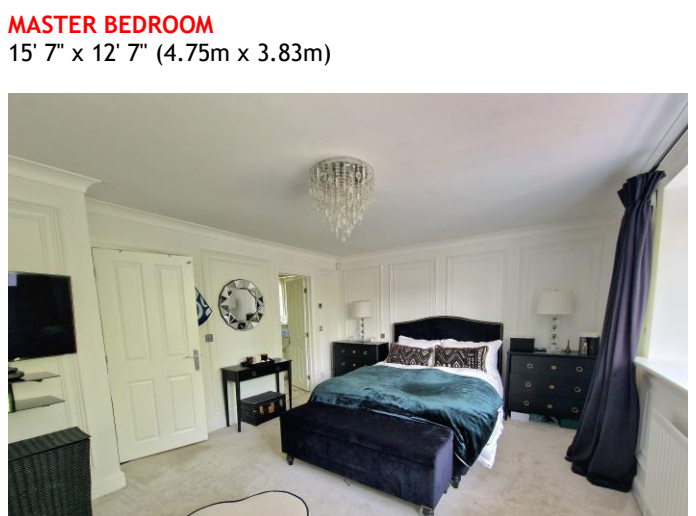
UTILITY ROOM

8' 4" x 5' 4" (2.54m x 1.62m)



BEDROOM THREE

11' 5" x 11' 2" (3.48m x 3.40m)



BEDROOM FOUR

11' 4" x 10' 10" (3.45m x 3.30m)

LUXURY ENSUITE BATHROOM

8' 10" x 5' 8" (2.69m x 1.73m)

BEDROOM TWO

12' 4" x 12' 0" (3.76m x 3.65m)



BEDROOM THREE

11' 5" x 11' 2" (3.48m x 3.40m)



GROUND FLOOR



1ST FLOOR



Whilst every attempt has been made to ensure the accuracy of the floorplan contained here, measurements of rooms, "bedrooms", rooms and any other spaces are approximate and we do not accept any liability in relation to the accuracy of these measurements. They should be used as a guide only and not as a guarantee. The actual measurements and floorplan should be used for all purposes. Made with Metropix ©2024



